



Evaluation of Ohio's CCA Funded Programs



Purpose of the Study

The primary purpose of this study was to examine the Community Correction Act programs in Ohio to determine:

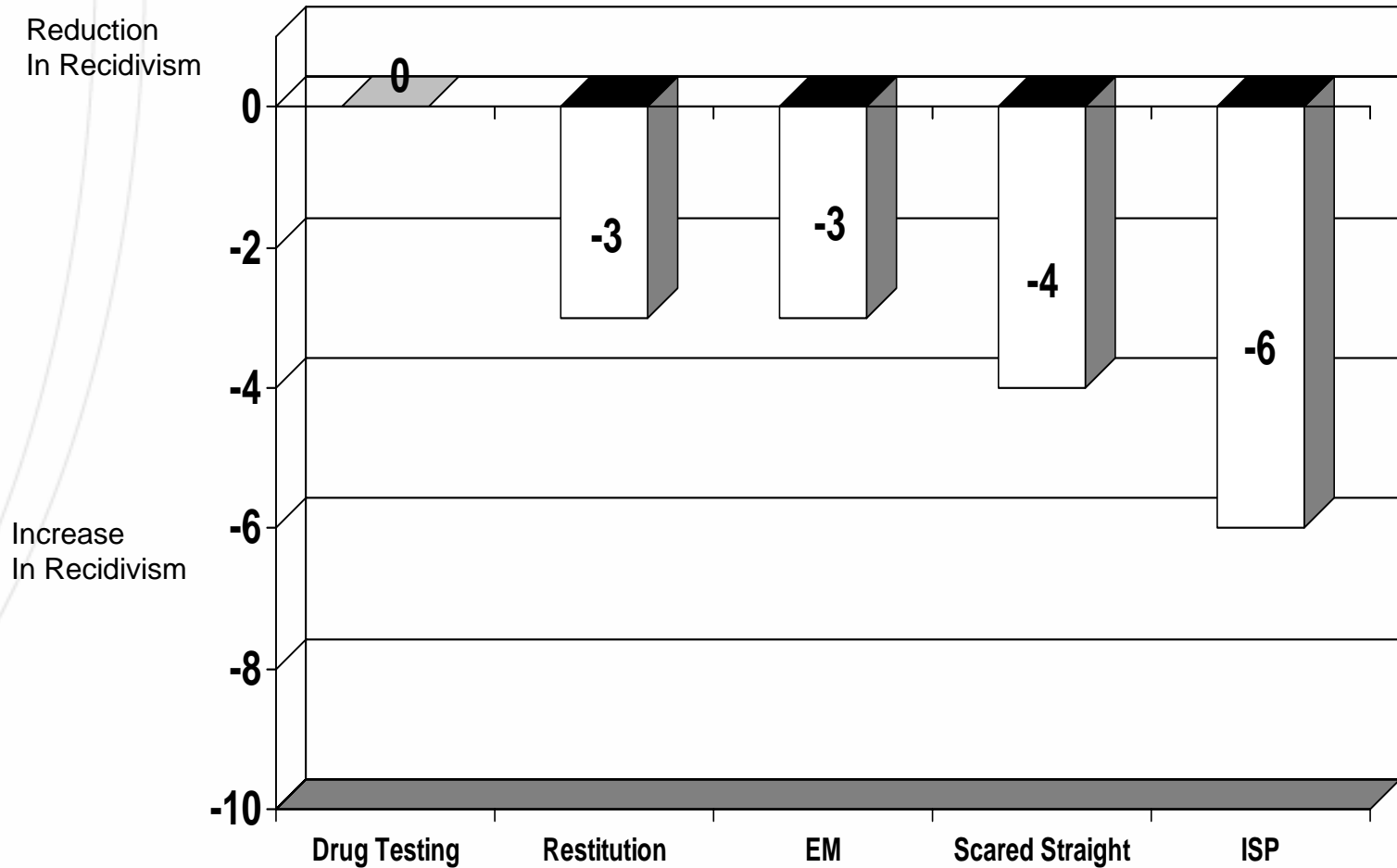
- If they were effective in reducing recidivism, and if so,
- Which programs were effective, and
- What were the characteristics of the programs that were having an effect

Prior Research In This Area Has Indicated....

....that at best “punishing smarter” programs such as intensive supervision programs have no effect on recidivism, and at worse lead to slight increases

- Petersilia and Turner 1993
- Fulton et al., 1997
- Gendreau et al., 2000

Average Effect Sizes of Punishing Smarter Programs on Recidivism: Results from Meta Analysis



Gendreau et al (2000) The Effects of Community Sanctions and Incarceration on Recidivism, FORUM

Conclusions About ISP

- Without some human service, criminal sanctions and programs such as ISP have no appreciable effect on recidivism
- But, this research and other research has identified important principles
 - Risk
 - Need
 - Treatment
- We allowed this prior research to shape the current investigation

Issues to Clarify

- CCA all terminations, CBCF/HWH successful terminations
- Surveys of program characteristics
 - Time between survey and operations is a concern and should be taken into consideration
 - Application is appropriate

Reliability

- Same process used for in earlier research
- Research found strong relationship between survey and assessor based ratings
- Research found strong relationship between measures in 2002 and measures from 1999 or earlier
- CBCF/HWH directors DID NOT review the surveys
- Still a limitation of the current research and certainly should be taken into consideration

Applicability of Measure to ISP

- Measure based on CPAI
- CPAI is designed for any correctional intervention where the aim is to reduce criminal behavior
- UC has applied the CPAI to approximately 79 similar programs across the country

Applicability of Measure to ISP

- These programs include:
 - 27 Day Reporting Programs
 - 46 Probation Units or Probation Based
 - 6 Work Release
- Scores from CPAI on these 79 programs (average 52%) are very similar to average scores for other residential and non-residential programs
- The applicability of this assessment, both content and process, is bolstered by
 - HWH/CBCF study
 - Correlation with outcome (in the range of .60)

Overview of Study

- Purpose
- Methodology
- Results

Methodology

- Quasi experimental design—matched comparison cases
- Offender level data—gathered from files and CCISWEB
- Program level data—aggregated from CCISWEB data, file data, and staff surveys

Participants

- Two comparison groups for prison diversion
 - Parolees 55 sites
 - Probation 32 sites
- Two comparison groups for jail (8 sites)
 - Jail 3 sites
 - Probation 8 sites
- Total of 66 sites with some comparison group

Participants

Prison diversion

- All CCA offenders terminated in FY99 that spent at least 30 days in programming
- Comparison cases were parolees released in FY99 (5,112)
- Probationers that were terminated in FY99, 00, or 01 from regular supervision (2,343)
- Total unique CCA Prison Diversion 5,781

Participants

- Jail diversion
 - Very difficult to develop comparison groups
 - Could only match 707 offenders in 8 sites

Measures

Offenders were matched on sex, county of supervision, and a risk score that included the following:

Factor	Weight	Factor	Weight
Marital Status	1	Less than HS degree	1
Unemployed	1	Alcohol Problem	1
Drug Problem	1	Age	1
History of Sex Offense	1	History of Violent Offense	1
History of felony arrests	1	CS Violation	1
Felony level	1	Prior arrests	1 or 2
Prior incarcerations	1 or 2		

Other Measures

- Treatment referrals
- Demographic characteristics
- Criminal history
- Current offense information
- Length of programming

Outcome Measures

- Collected several outcome measures:
 - Jail diversion any new arrest
 - Prison diversion any new incarceration

Program Level Measures

- Gathered information using staff survey which covered program in FY99
- Also asked about available services in the community in FY99
- Survey based on CPAI but we did not conduct CPAI assessments

Program Level Outcome Measure

- r value which captures difference in recidivism rates between CCA participants and comparison group
- Can be interpreted as a percentage point difference in recidivism rates

How to Interpret r-values

Positive Numbers Favor
CCA Participants

0 Means No
Difference

Negative Numbers Favor
Comparison Group

r-value	Percentage of Failures	
	CCA Participants	Comparison Group
.20	40	60
.18	41	59
.16	42	58
.14	43	57
.12	44	56
.10	45	55
.08	46	54
.06	47	53
.04	48	52
.02	49	51
.01	49.5	50.5
.00	50	50
-.01	50.5	49.5
-.02	51	49
-.04	52	48
-.06	53	47
-.08	54	46
-.10	55	45
-.12	56	44
-.14	57	43
-.16	58	42
-.18	59	41
-.20	60	40

Results

- Matched Prison Diversion Cases
 - 50% White
 - 90% male
 - Majority
 - Single
 - Unemployed
 - Less than a high school degree
 - Alcohol or drug history
 - Almost 70% drug or property offenders
 - 60% moderate risk

Results

- Matched Jail Diversion Cases
 - 60% White
 - 80% male
 - Majority
 - Single
 - Employed
 - Less than a high school degree
 - Alcohol or drug history
 - 60% “other” types of offenses
 - Almost 80% were low or low/moderate risk

Results

- Total prison diversion programs with matched comparison
 - 55 (55/32)
 - 6 DR
 - 2 EM
 - 42 ISP
 - 2 WR
 - 3 Sub Abuse TX
- Total jail diversion programs with matched comparisons
 - 11 (8/3)
 - 3 DR
 - 1 WR
 - 1 DV
 - 5 ISP
 - 1 Residential TX

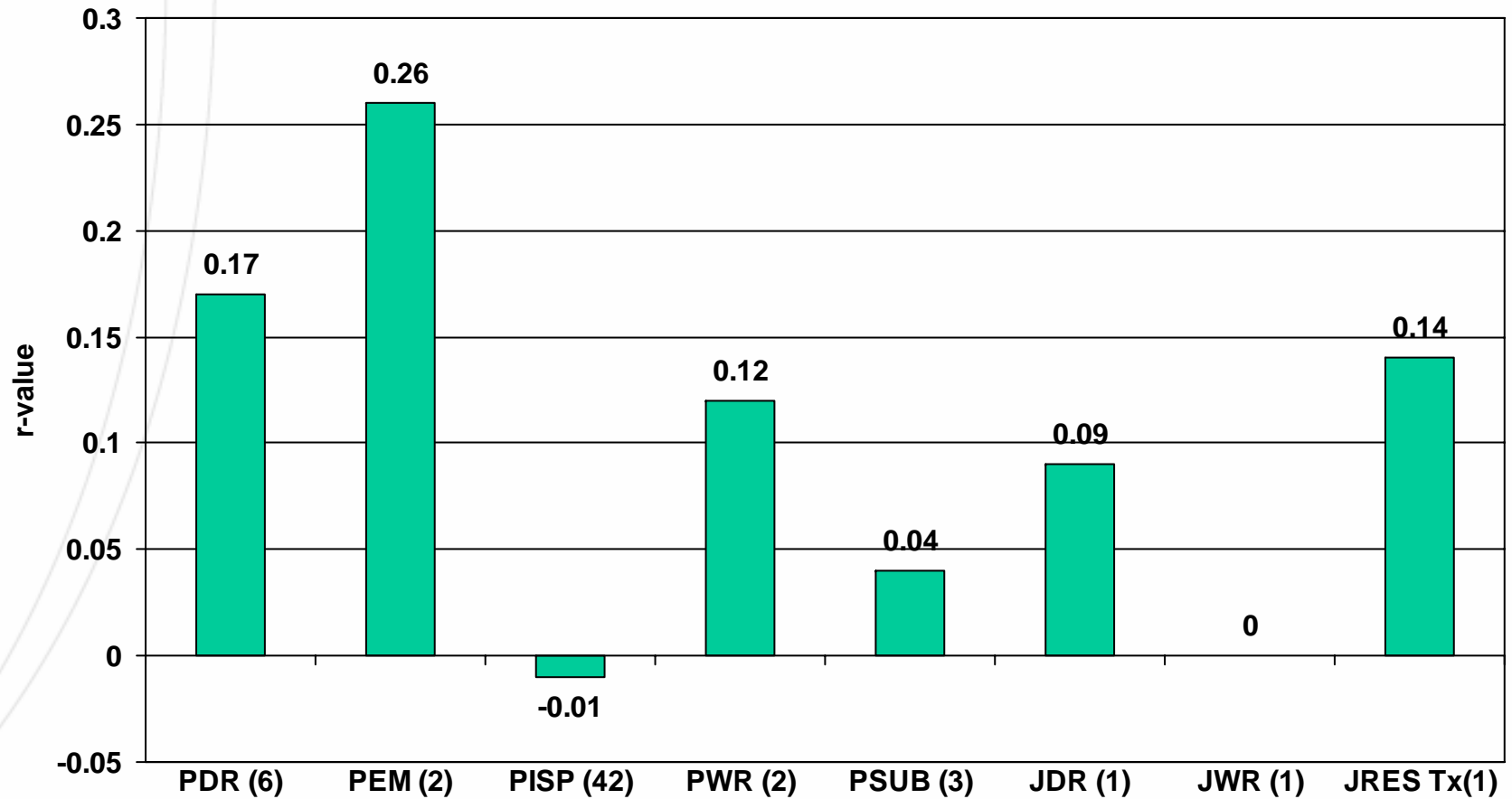
Impact of Prison Diversion Programs

- Compared to parolees average r-value of .02
- Compared to probation average r-value of -.14

Impact of Jail Diversion Programs

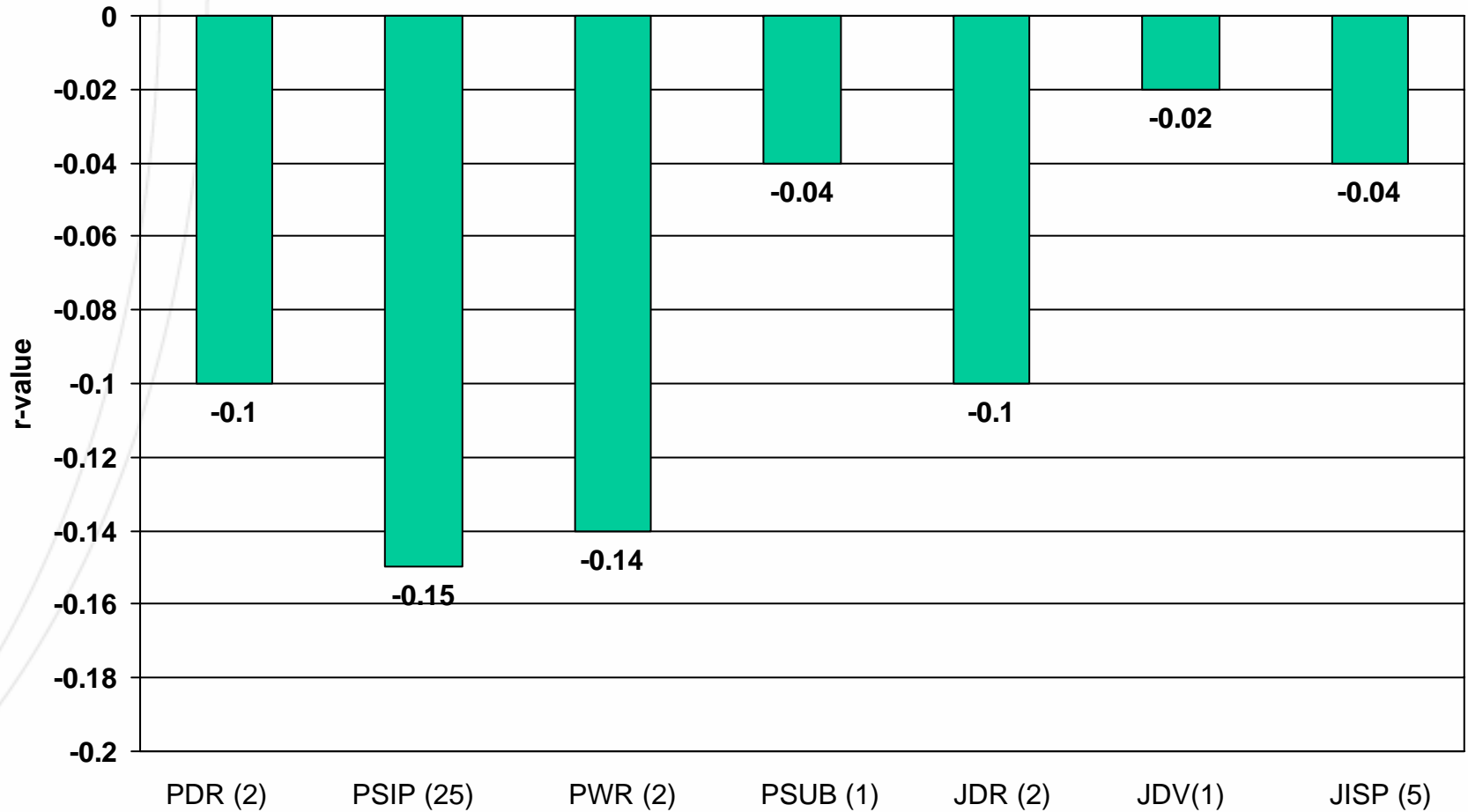
- Compared to jail inmates average r-value of .06
- Compared to probation average r-value of -.06

R-value by Program Type Parole/Jail



R-value using parolees/PRC/jail inmates as comparison groups. PDR, PEM, PWR, significant at .05.

R-value by Program Type Probation



R-value using probation as comparison groups.

Overall Outcome Evaluation Results

- Minimal effects when compared to parole/jail
- Increases in recidivism when compared to probation
- No difference between types of programs (see figures 4 and 5 in report)

Do Program Characteristics Matter?

- Wanted to determine if there were shared characteristics across effective programs
- Used surveys to develop measures many of which are similar to those on the CPAI
- 31 factors determined to be related to outcome
- Content and capacity

Factors

Director caseload	Director experience	Staff value/skill
Staff input	Staff experience	Staff meetings
Training	Budget	Community support
Caseload size	Pre/post test	Outcome eval
Funding	QA	Tx model
Process eval	# of groups available	Exclusionary criteria
Exclusions followed	Length of program	Separate groups by risk
Hours of tx per week	Manual followed	Offender input
Manual	RP-treatment	Quality aftercare
RP-supervision	75% of referrals for tx	Success rate
Higher risk sample		

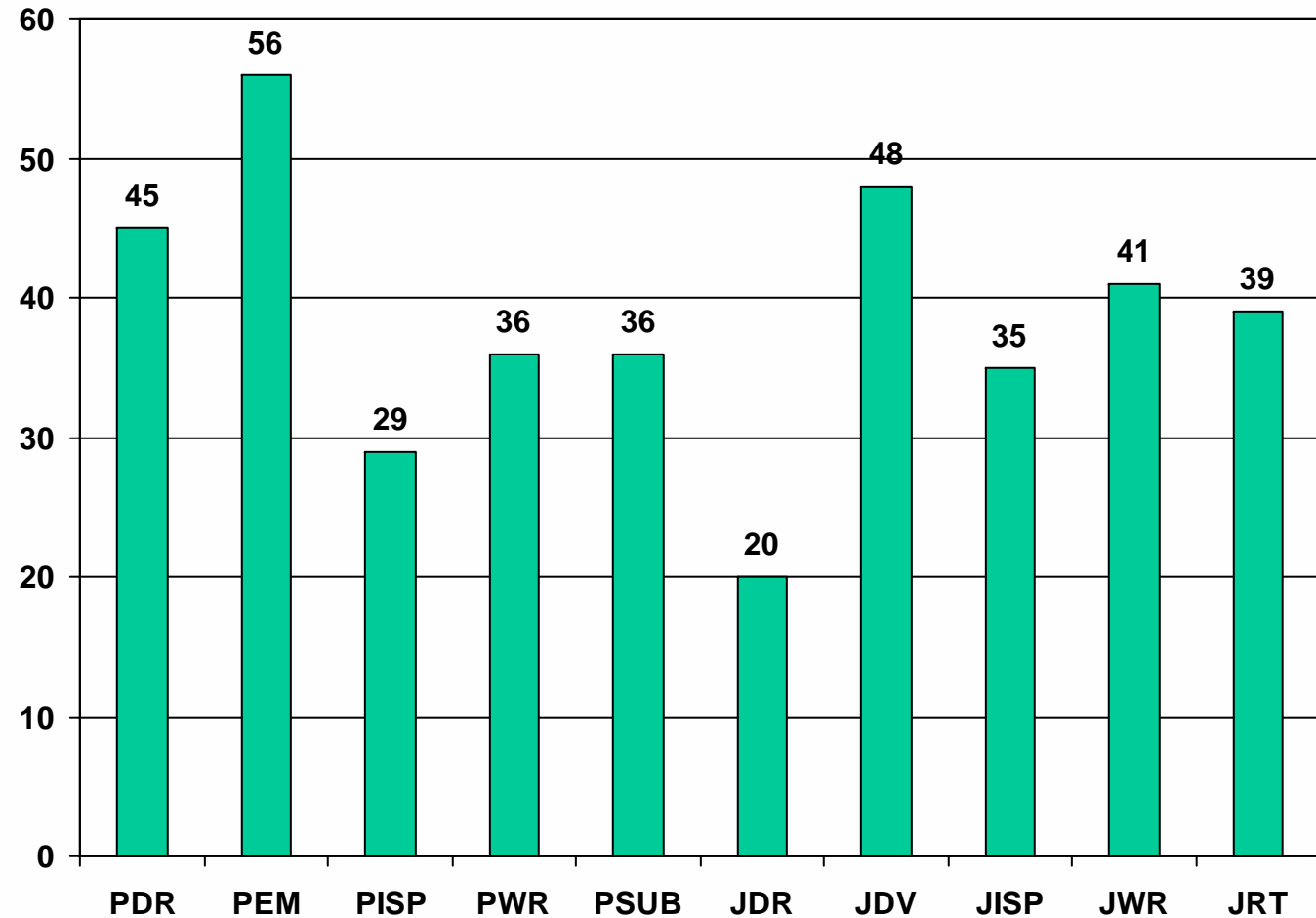
Program Factors

- Page 33 and 34 of report
- Card Explanation
- Most of the factors were based on survey
- Some based on aggregated CCISWEB data or file data
- Some might be impossible for some of you to meet for various reasons
- More important is determining which factors you can meet and how to go about

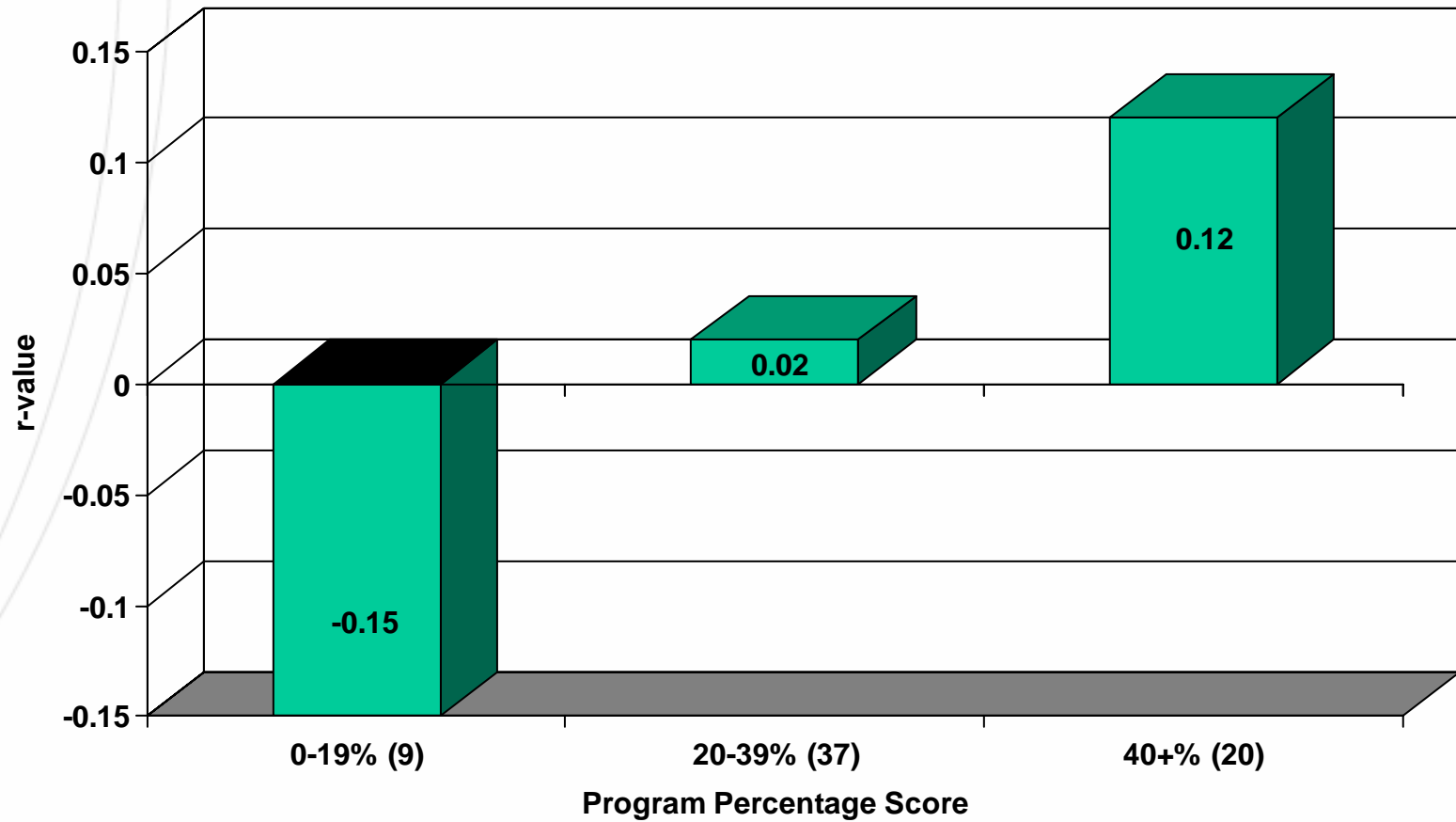
Average Scores by Diversion Type

- No difference between Jail and Prison Diversion
- Statistically no difference between program types
- There is a difference when you separate out by diversion and program type

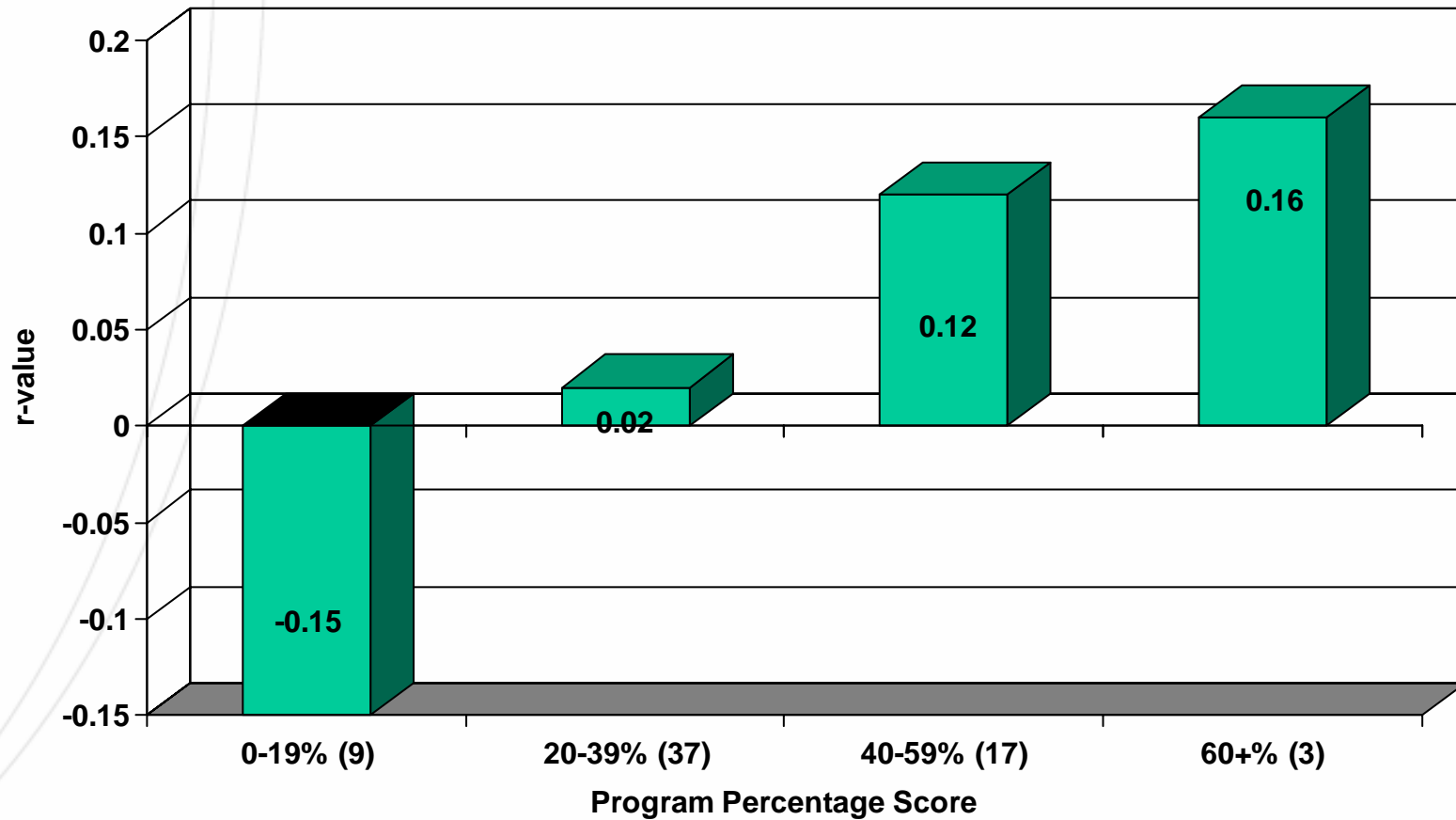
Average Scores by Program Type and Diversion Type



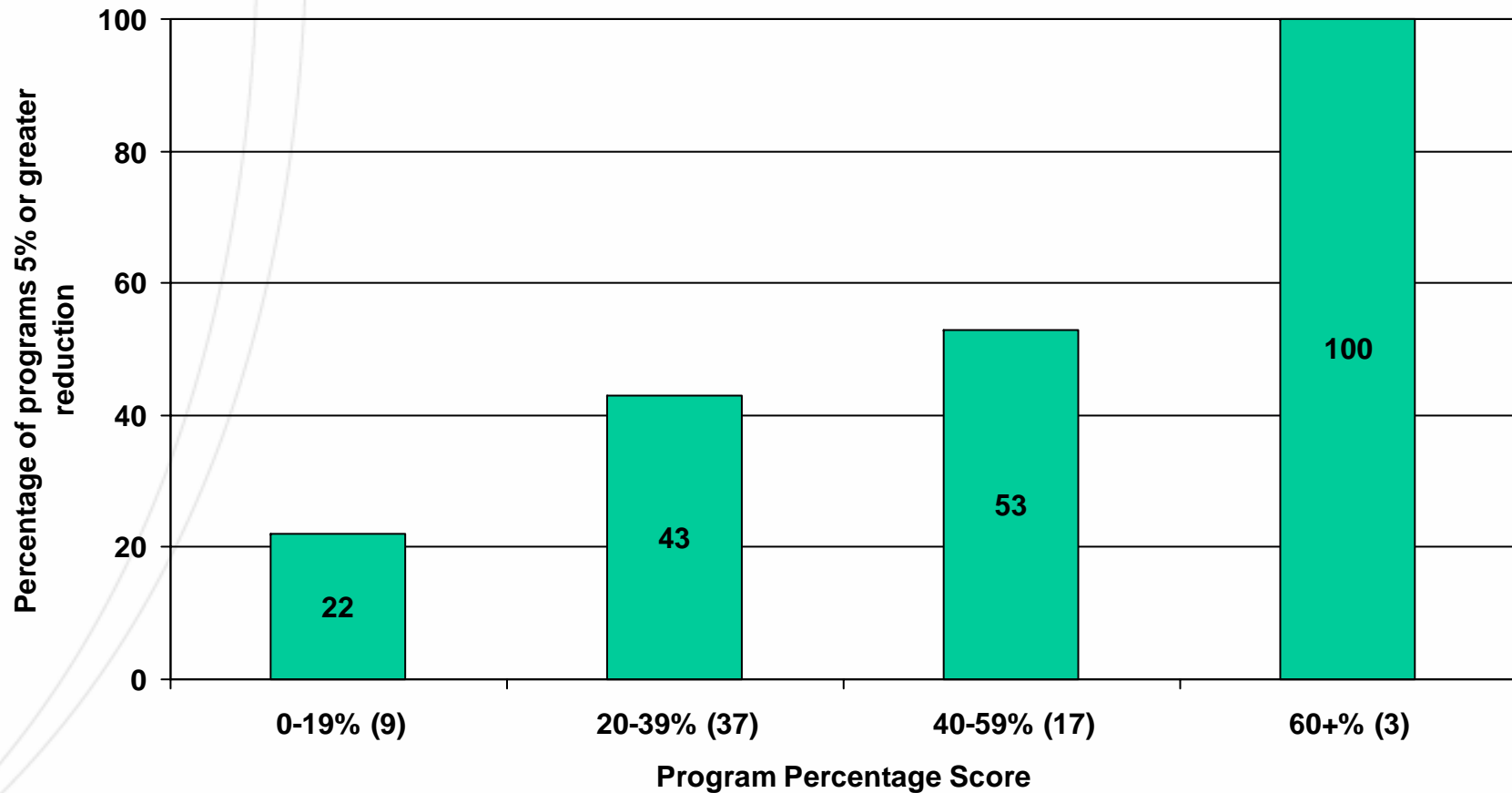
Average r-value by Program Score



Average r-value by Program Score



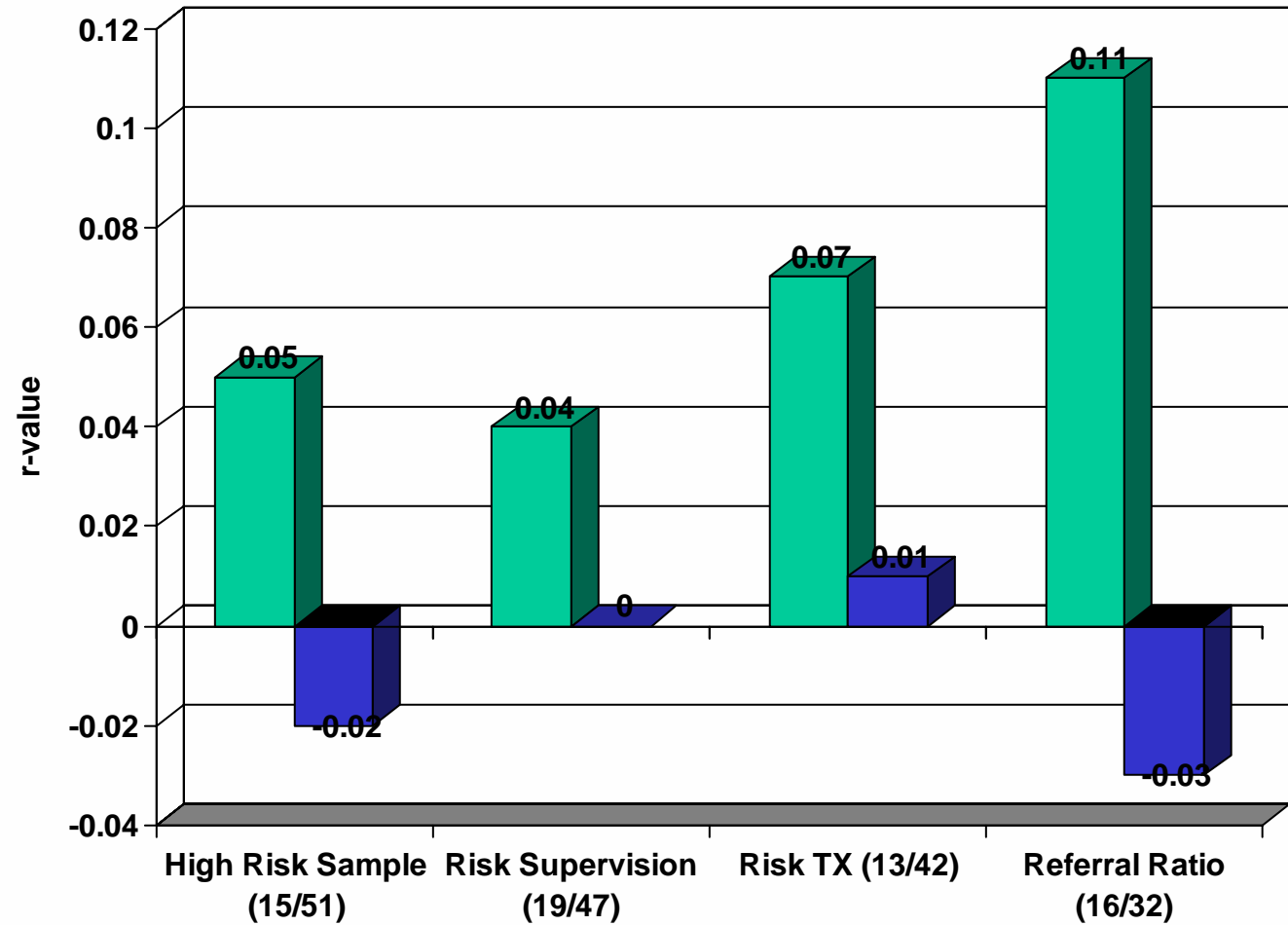
Percentage of Programs Demonstrating 5 Percentage Point Reduction or Greater



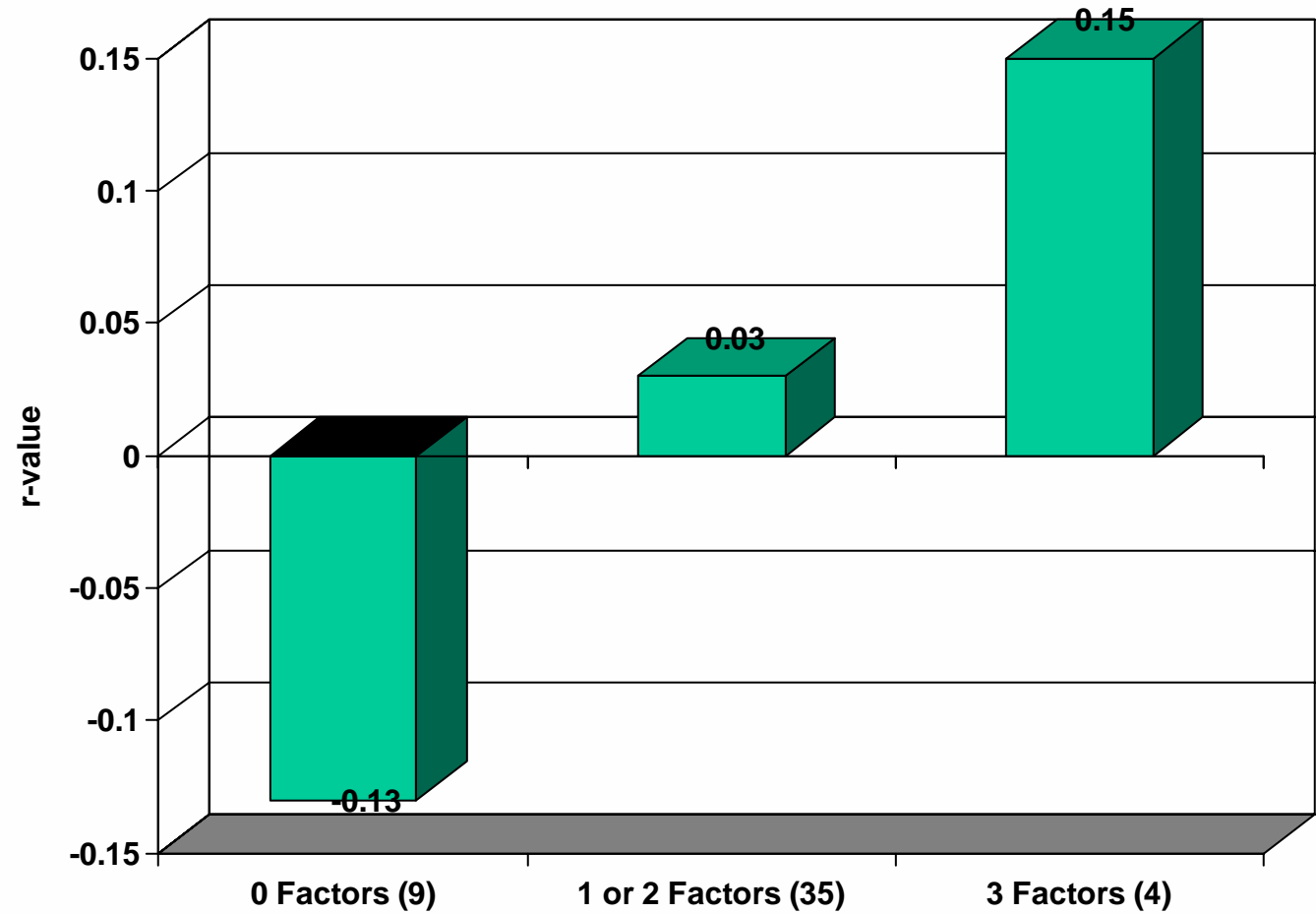
Program Cards

- Section I is based on all terminations
- Section II is based on matched cases ONLY
- Section III is percentage of recidivists and difference in recidivism rate between CCA participants and comparison group. Positive numbers mean CCA participants had a lower recidivism rate while negative numbers mean the CCA participants had a higher recidivism rate.
- Section IV lists how your program rated on 4 factors based on aggregated file or CCISWEB data.

r-values by Program Factors on Program Card



Average r-value by 4 Point Factor Score



Summary and Conclusions

- Overall CCA programs appear to have no appreciable effect on recidivism rates when compared to parolees
- CCA programs might be more effective when compared to jail releases but it is too small a sample to make definitive conclusions
- When compared to probation samples, CCA participants have higher recidivism rates
- Cutting across program type, comparison group type, and diversion type is the fact that what you do as a program matters!
- We can classify programs into effective and ineffective categories with 31 factors or 4 factors

Summary and Conclusions

- Target high risk, target high risk, target high risk.
- Vary length of supervision and services by risk level—I am yet to come across an agency that does this intentionally
- Refer for criminogenic services
- The 31 factors listed in the report are not necessarily what programs do but it is what they look like
- The 4 factors that are on the individual cards are what you should strive to do as an agency....the rest will likely follow.
- CCA programs can be effective by following some very simple principles of effective interventions which have been around for 20 years and are confirmed by this research as strongly impacting program effectiveness