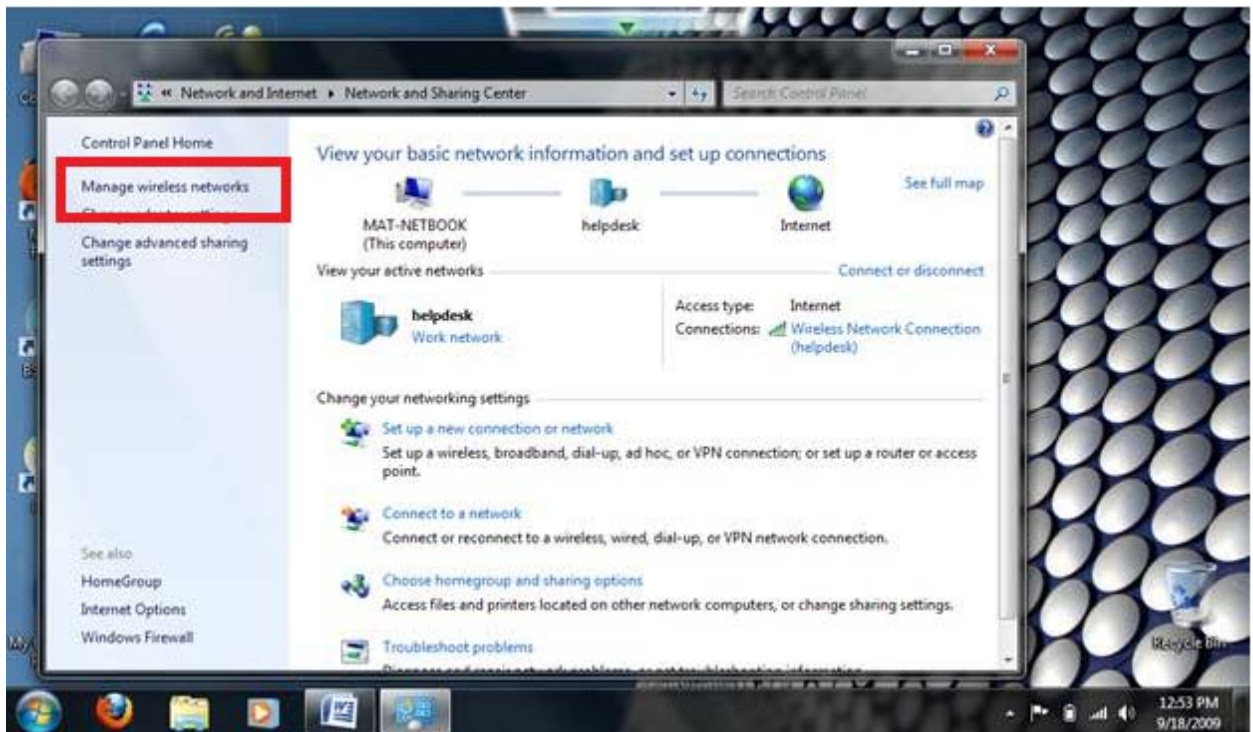


Securewireless Windows 7 Setup Instructions

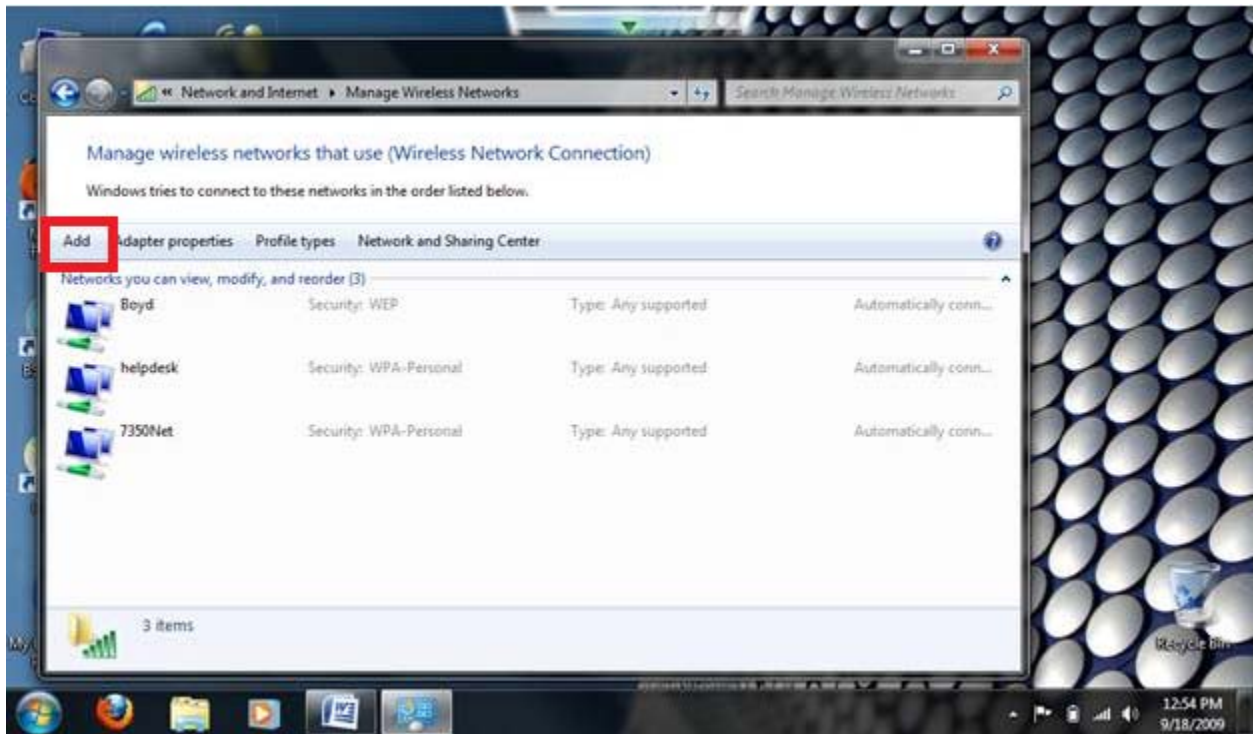
1. Click on the wireless icon on the taskbar, then click on "Open Network and Sharing Center".



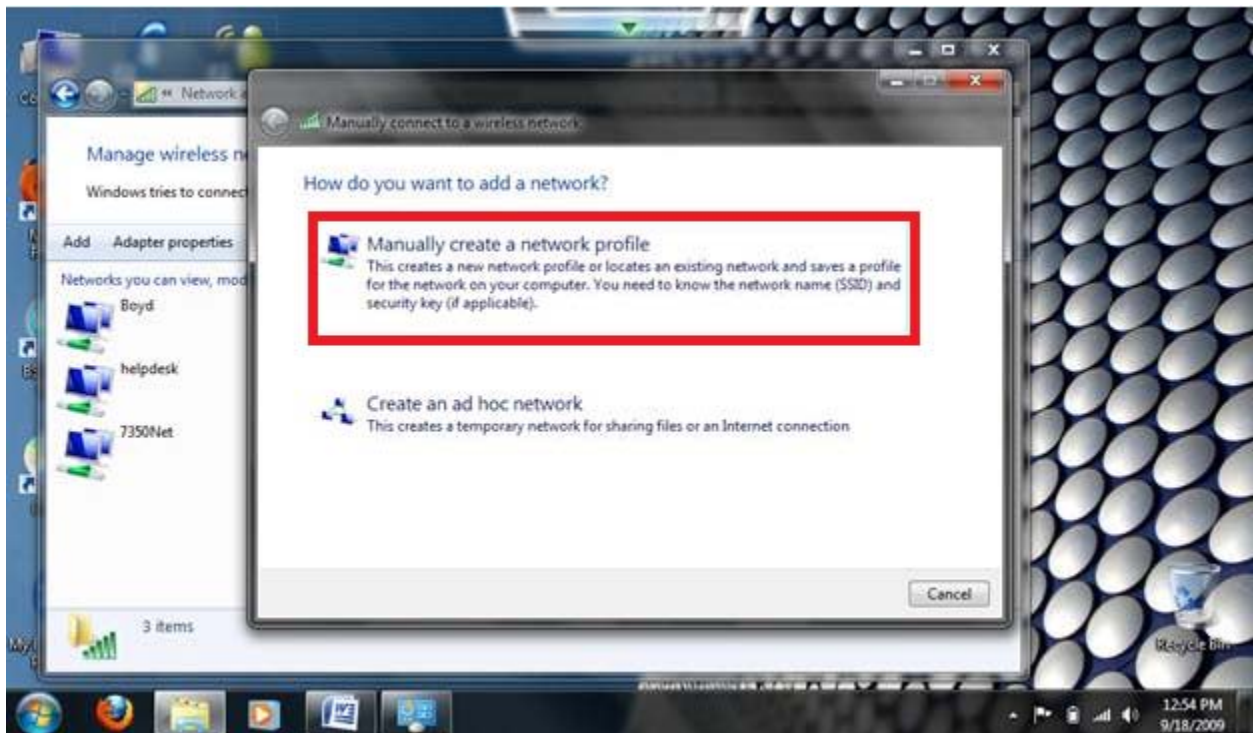
2. Click on "Manage wireless networks".



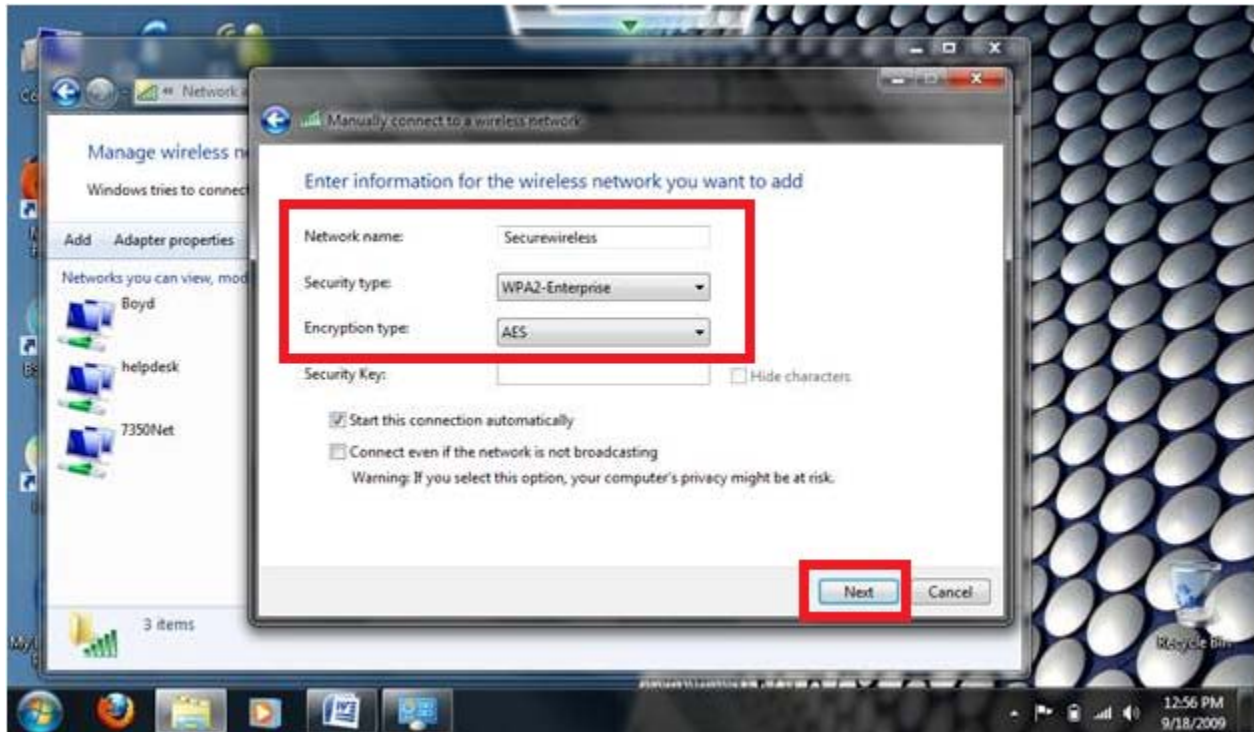
3. Click on "Add".



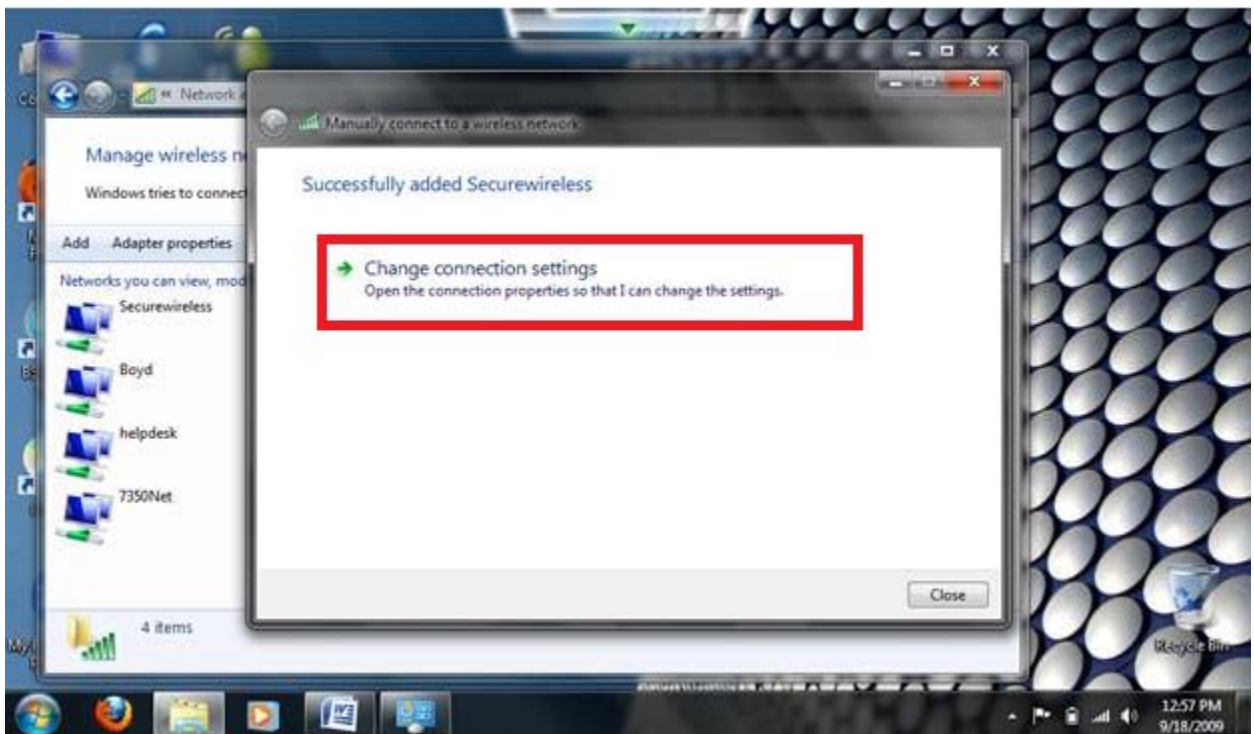
4. Click "Manually create a network profile".



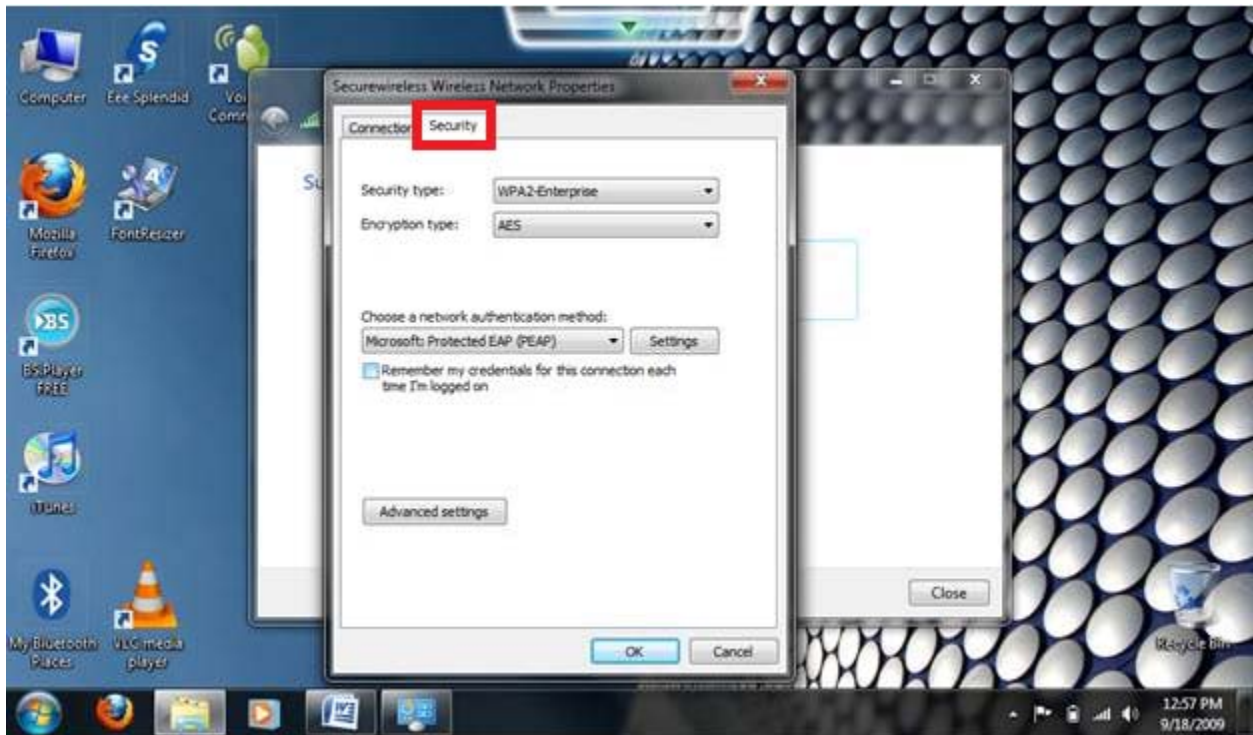
5. Fill in Network name: Securewireless and Security type: WPA2-Enterprise and click next.



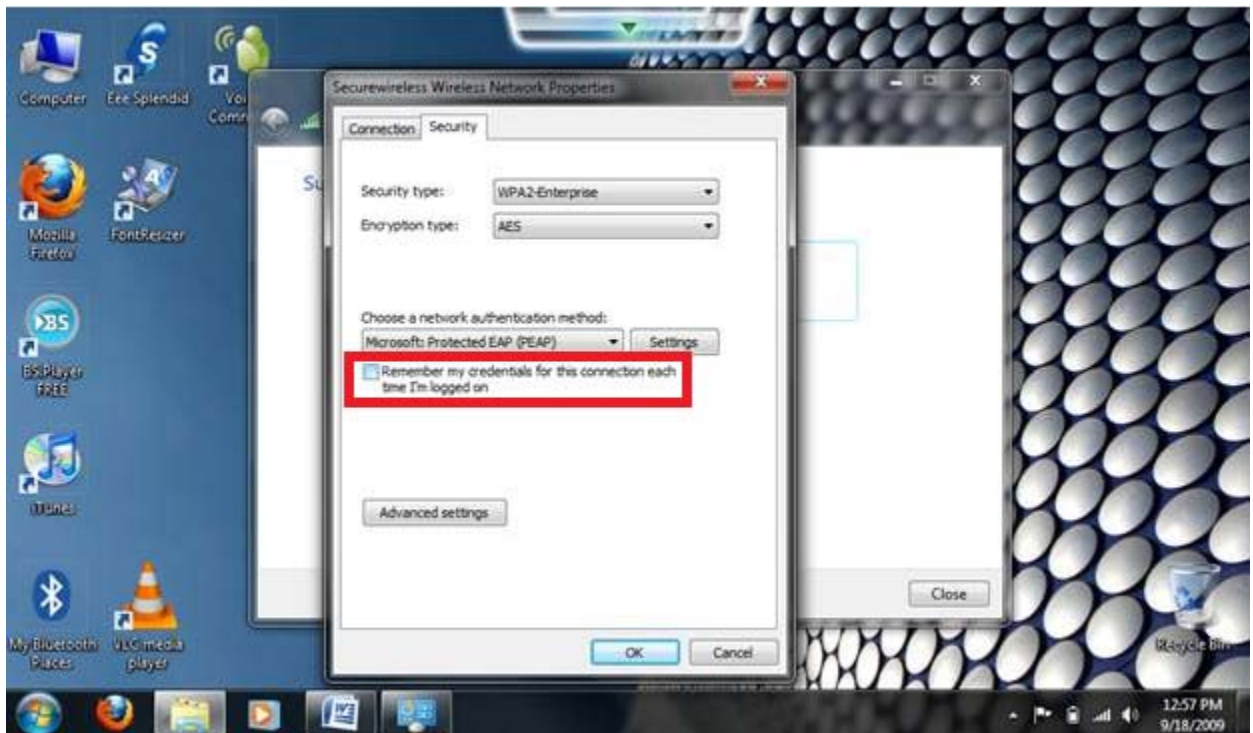
6. Click "Change connection settings".



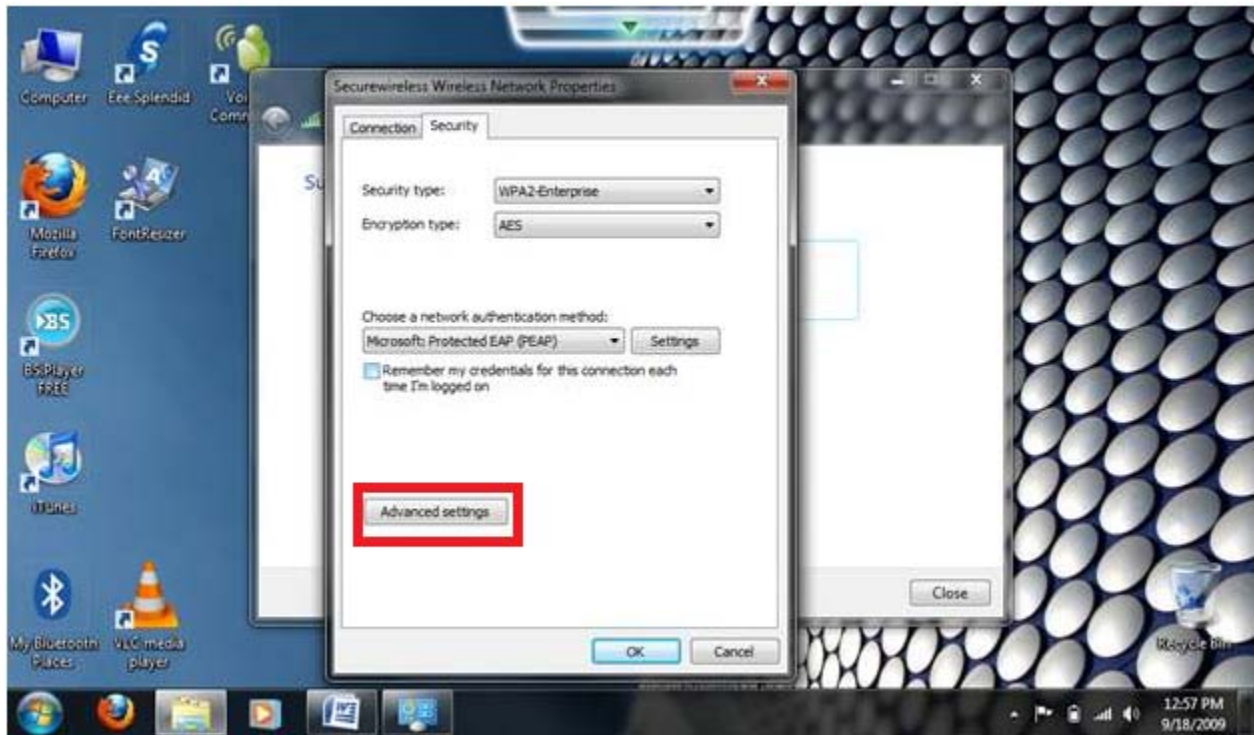
7. Click Security tab.



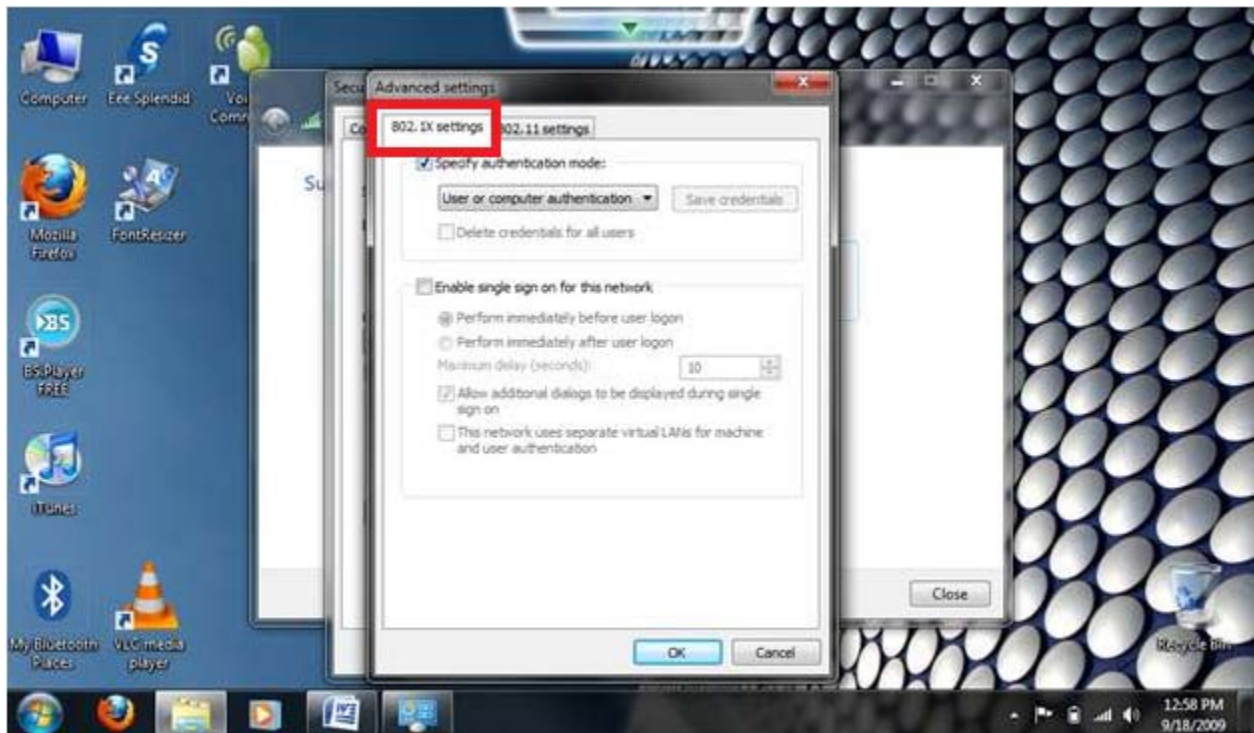
8. Uncheck "Remember my credentials for this connection each time I'm logged on".



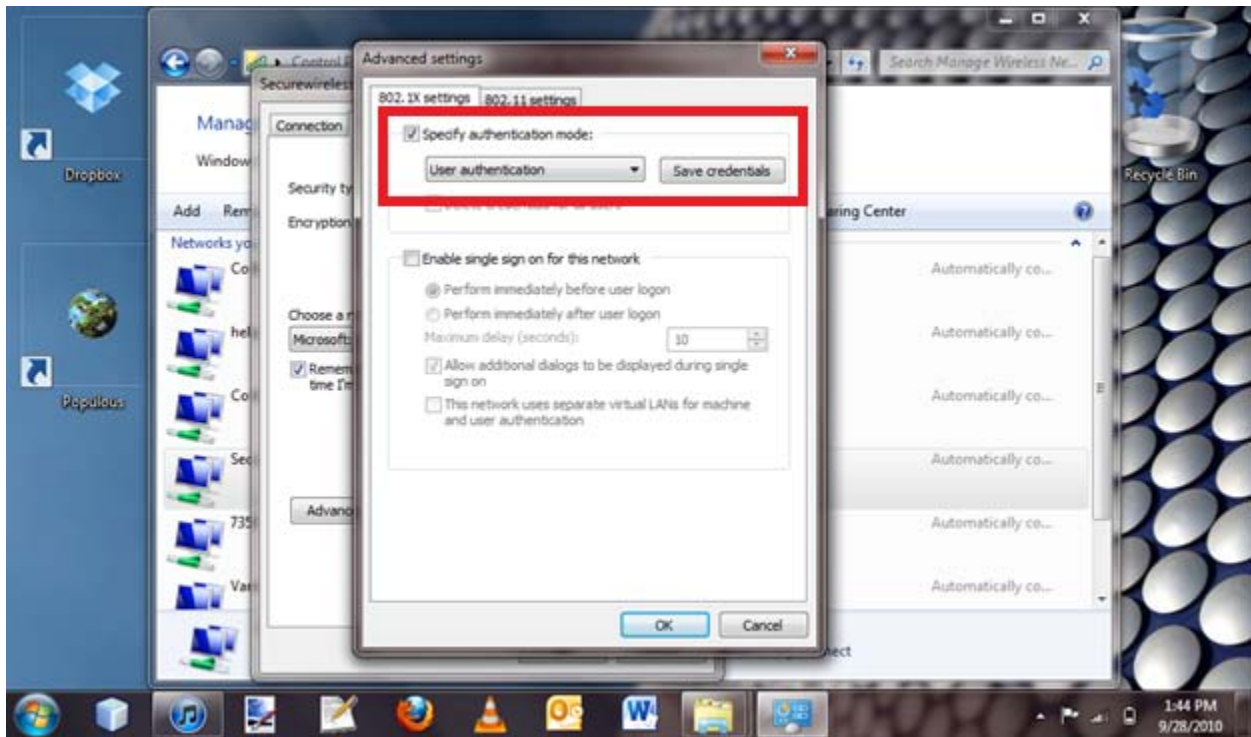
9. Click "Advanced settings" button.



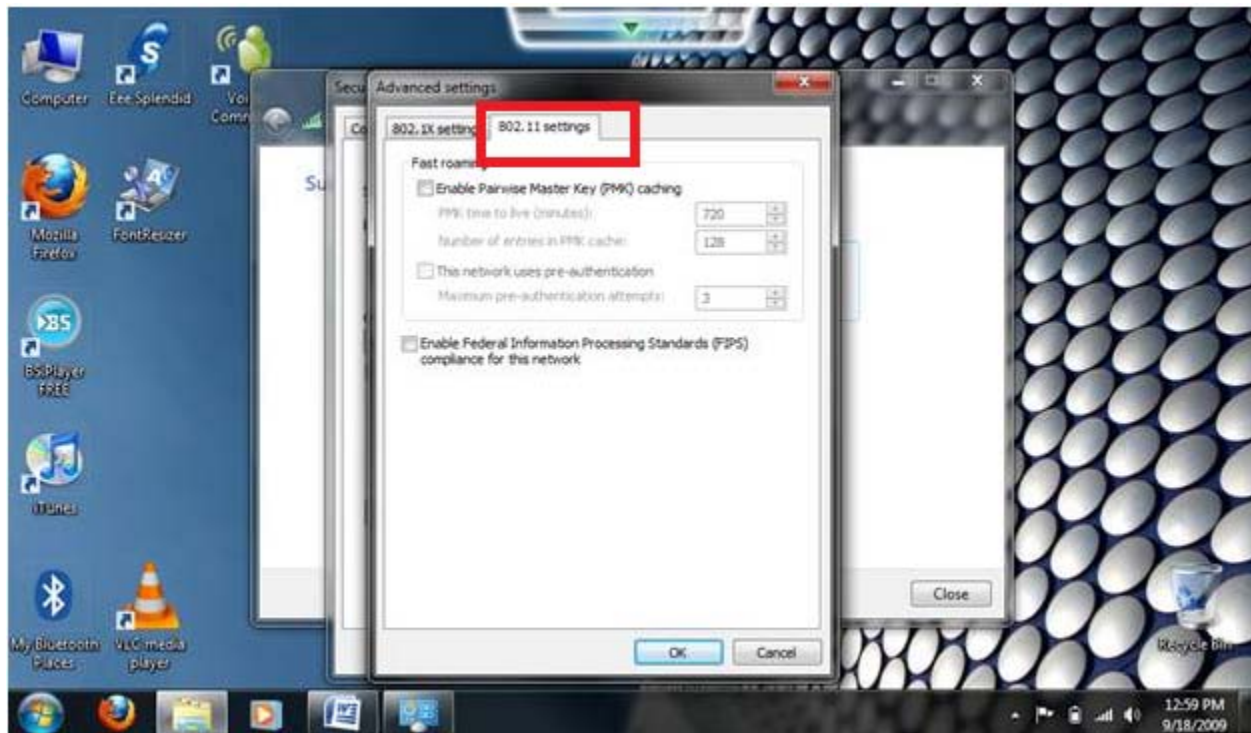
10. Click "802.1X settings" tab.



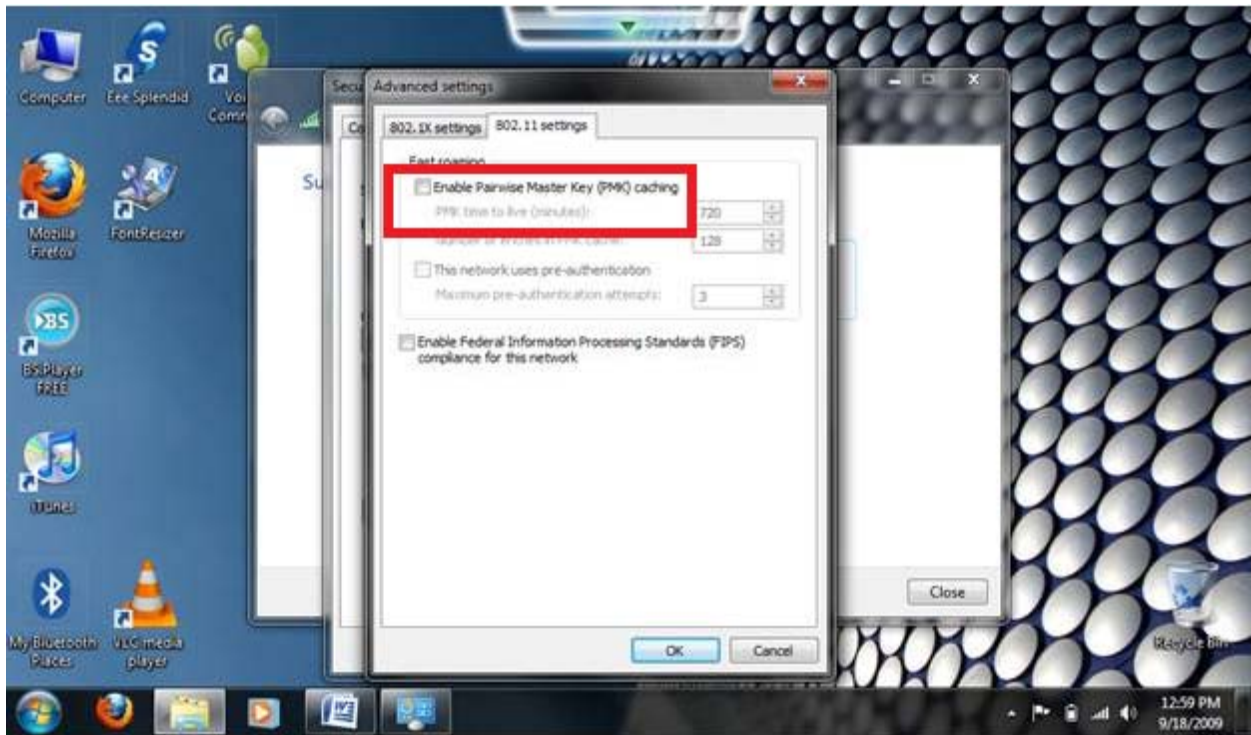
11. Check "Specify authentication mode" and select User authentication.



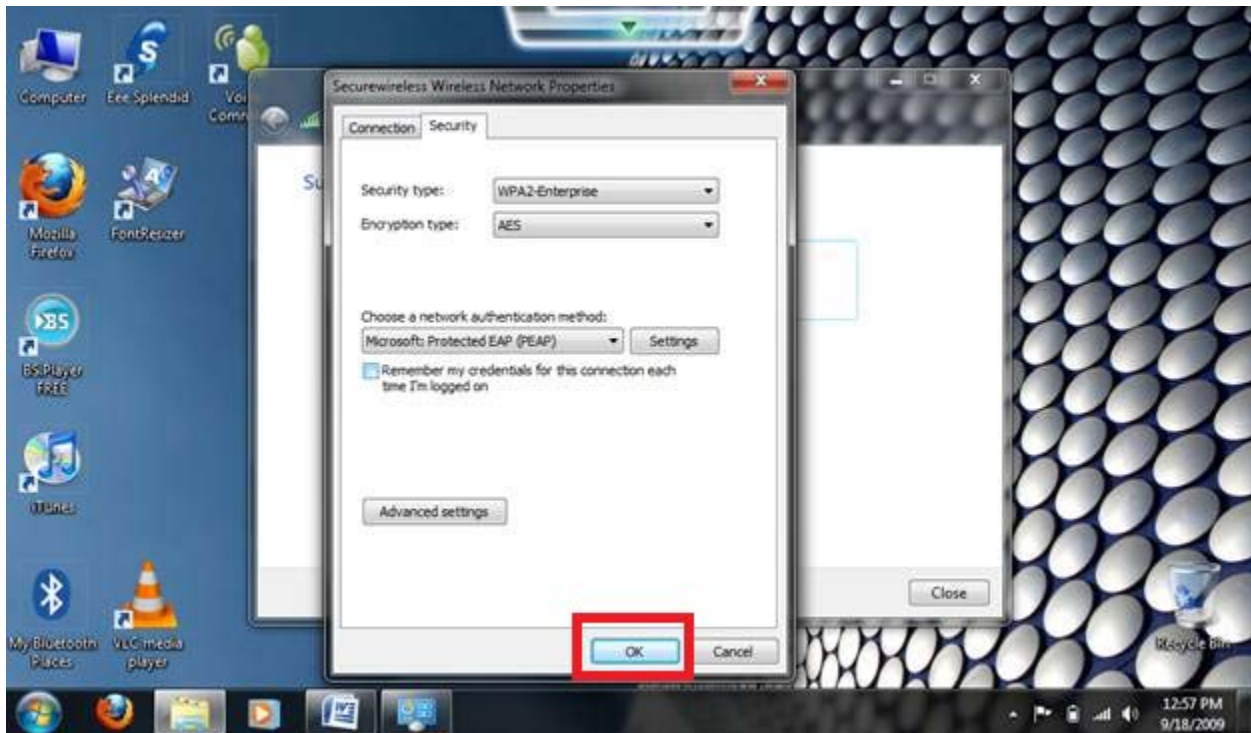
12. Click on 802.11 settings tab.



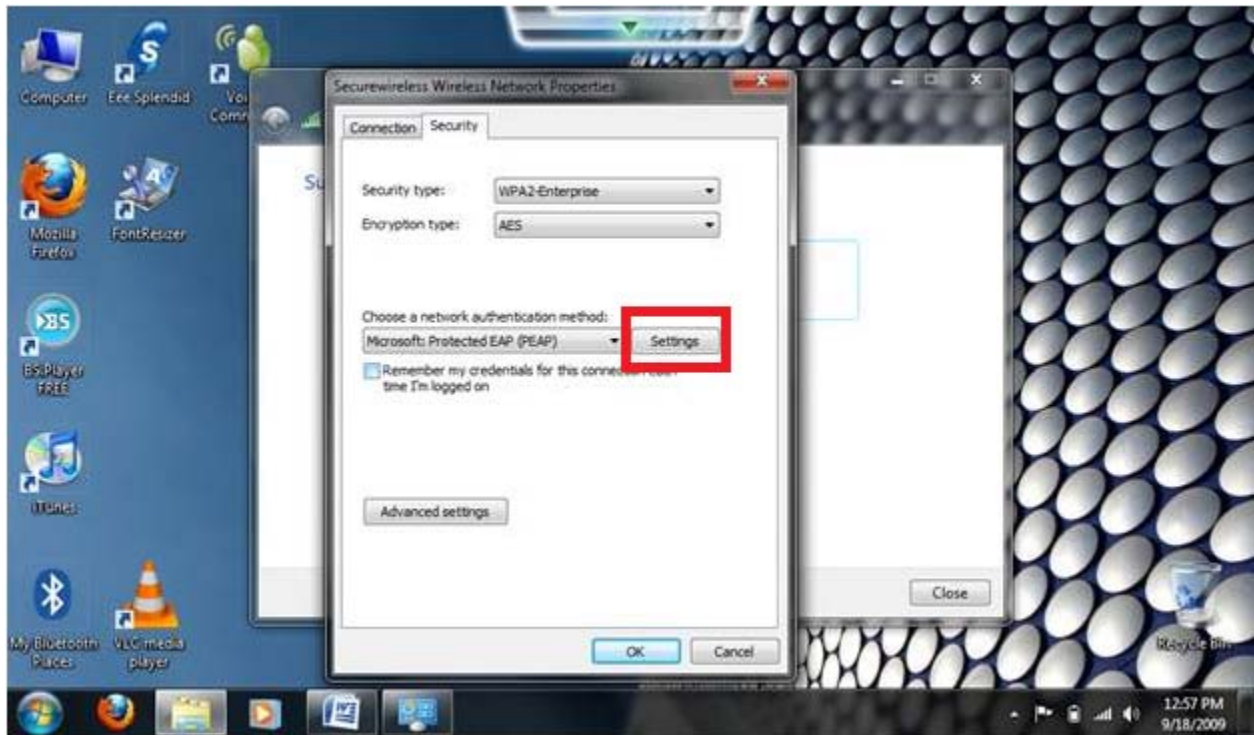
13. Uncheck " Enable Pairwise Master Key (PMK) caching.



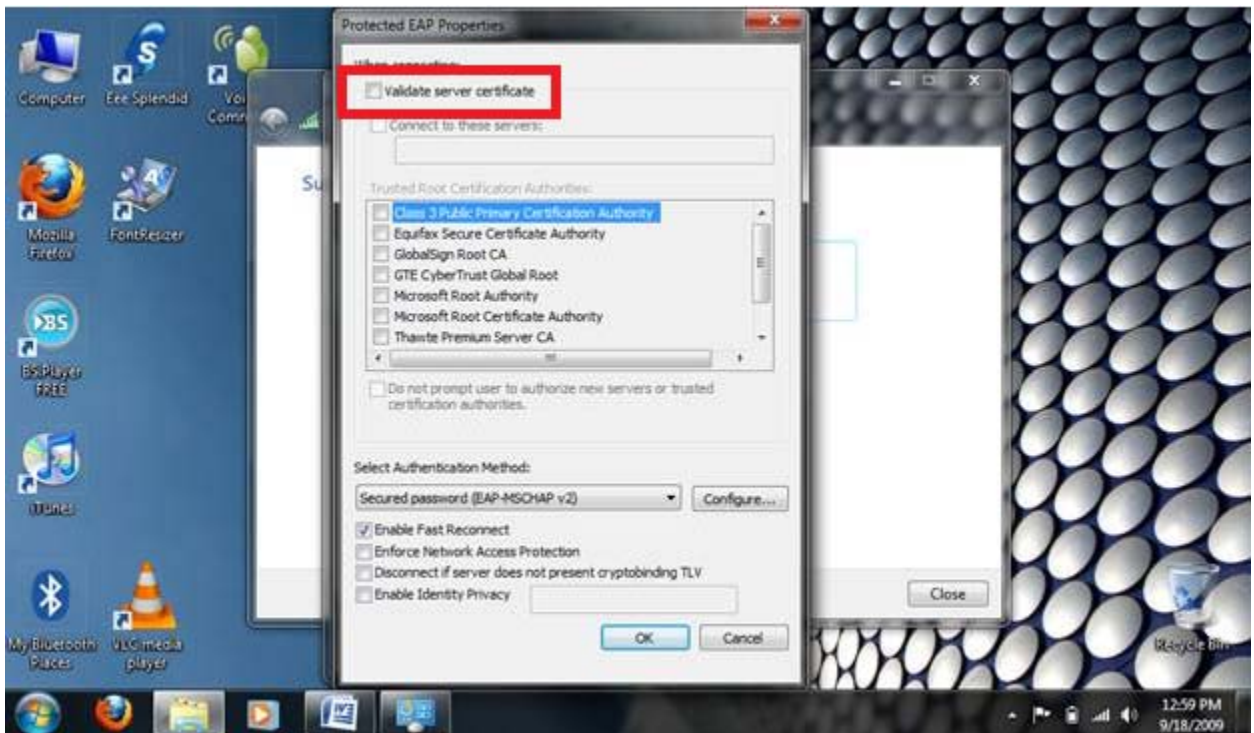
14. Click OK .



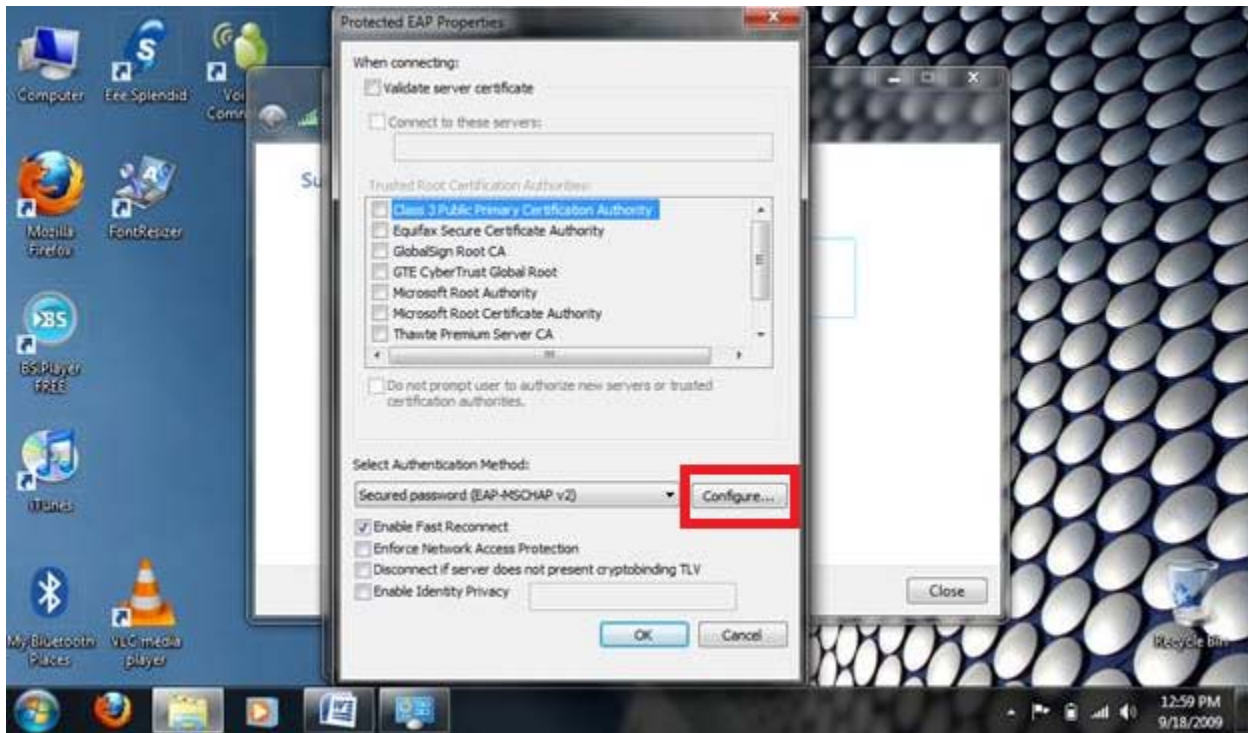
15. Click "Settings".



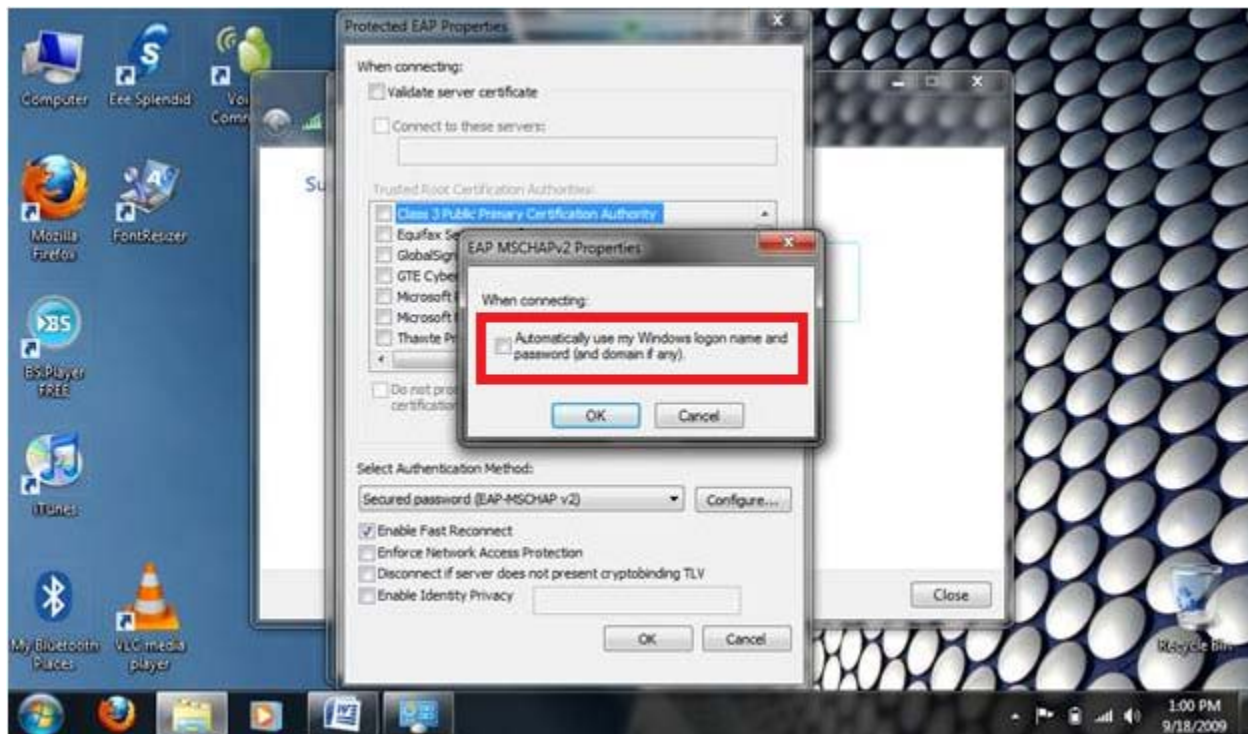
16. Uncheck "Validate server certificate".



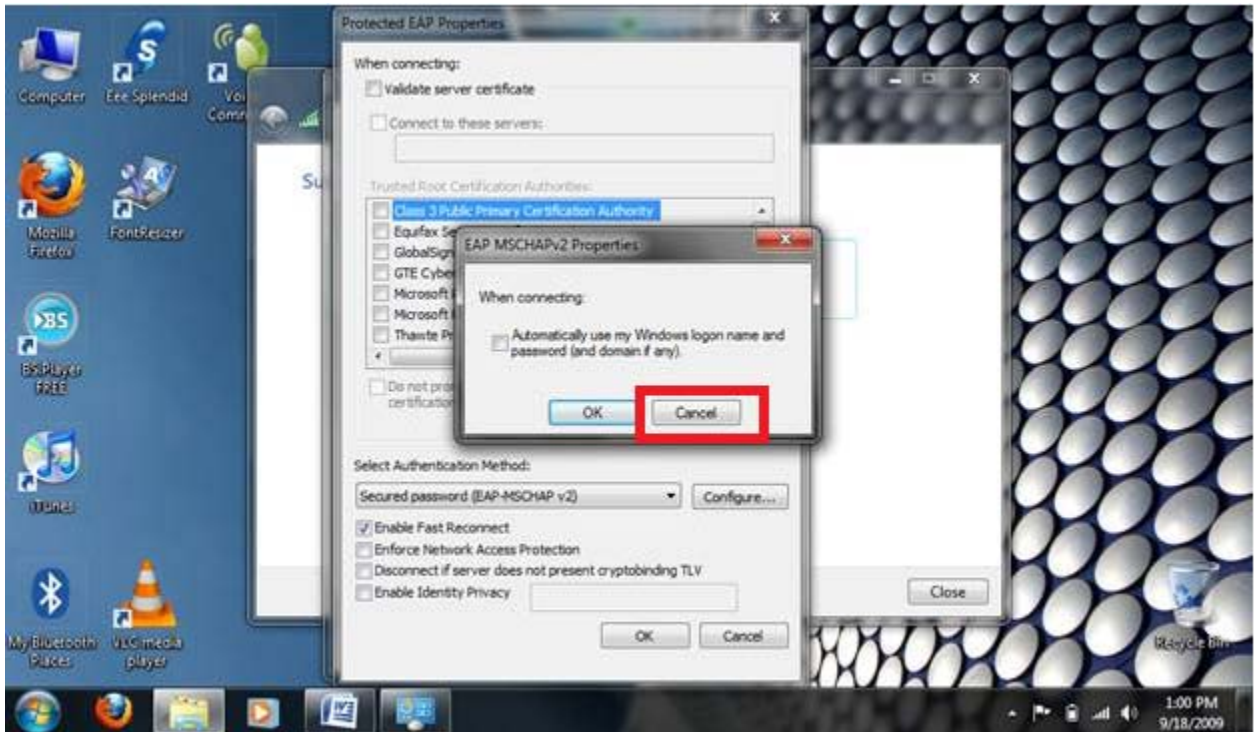
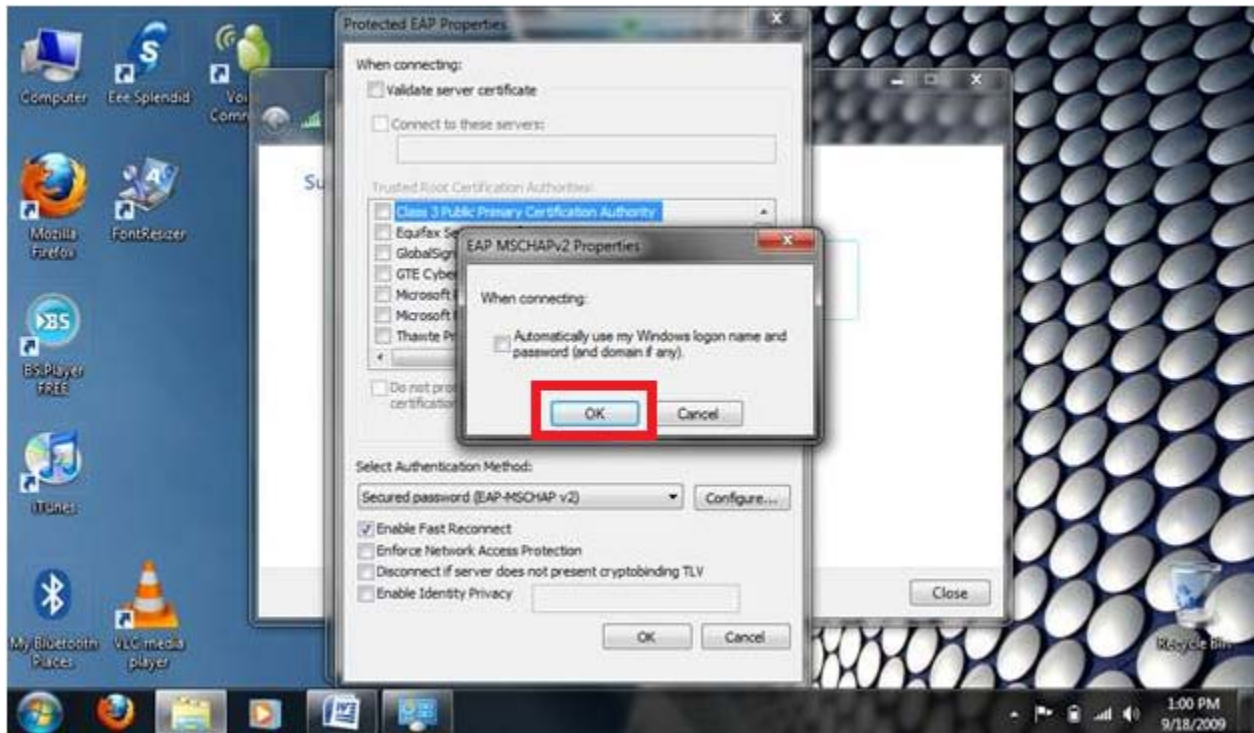
17. Click "Configure..."



18. Uncheck "Automatically use my windows logon name and password (and domain if any)."

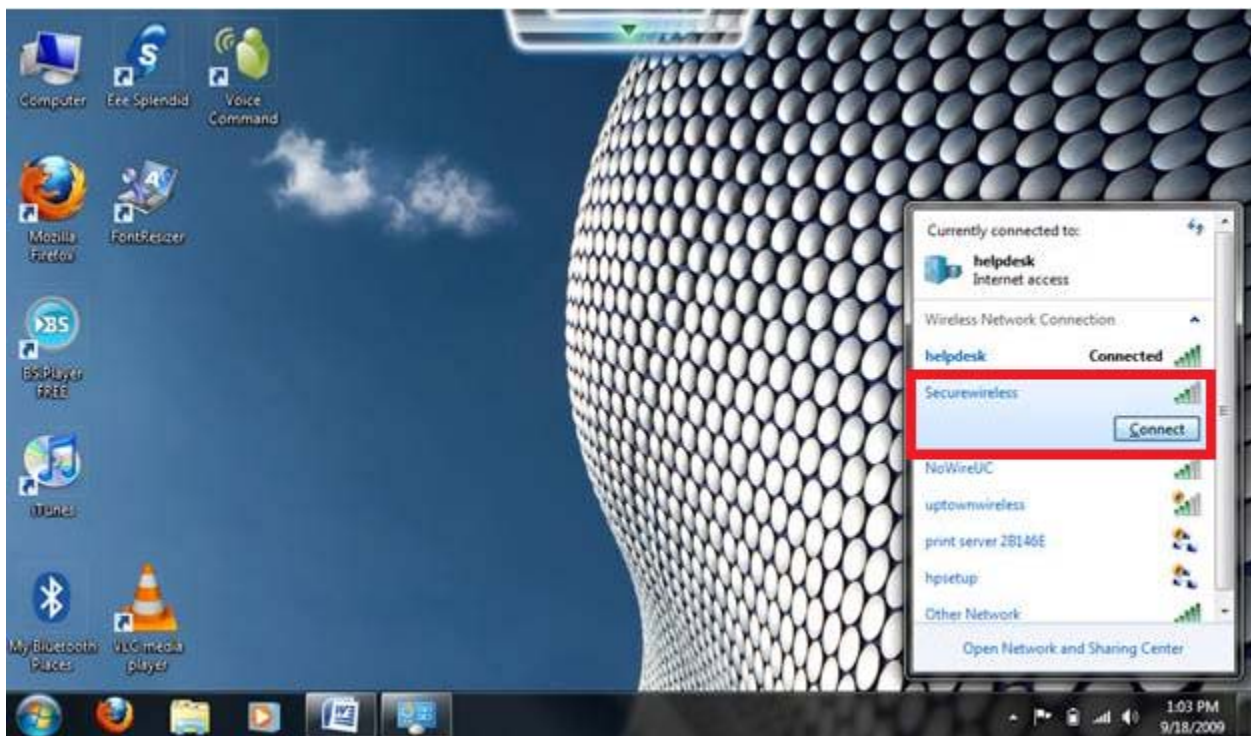
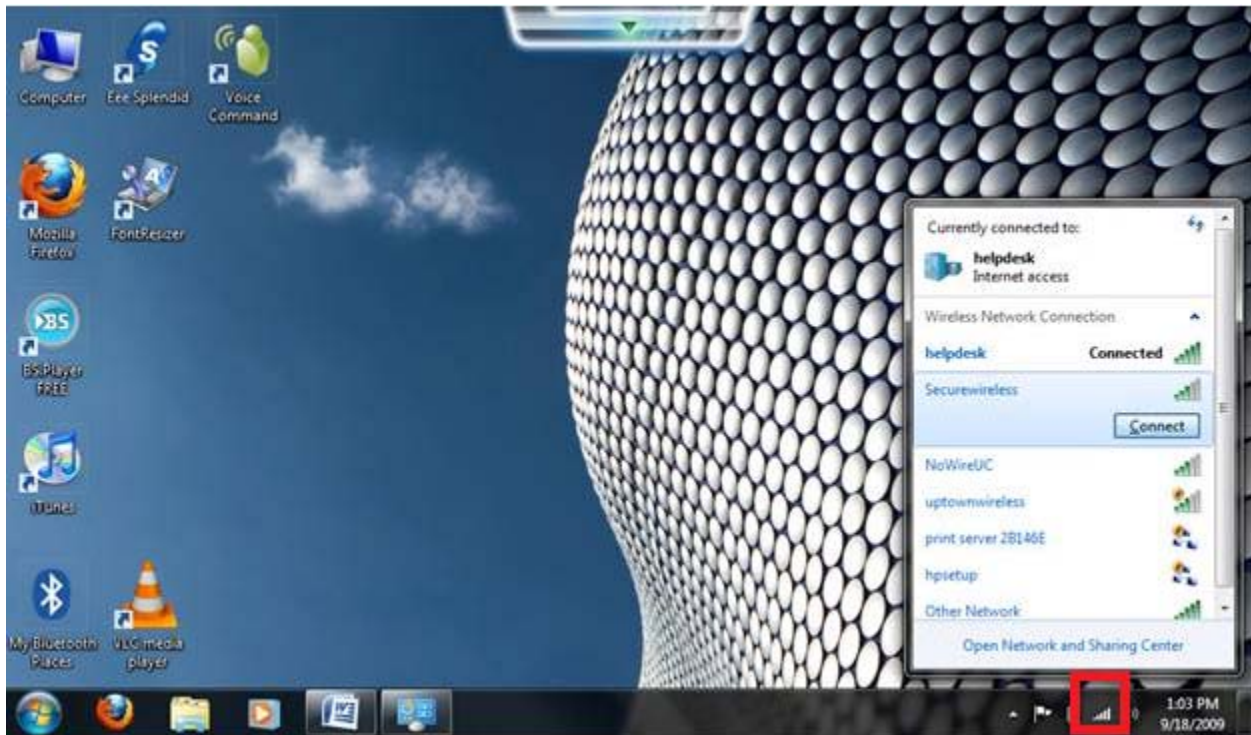


19. Click "OK" on each screen until you get to the close screen and click "Close".

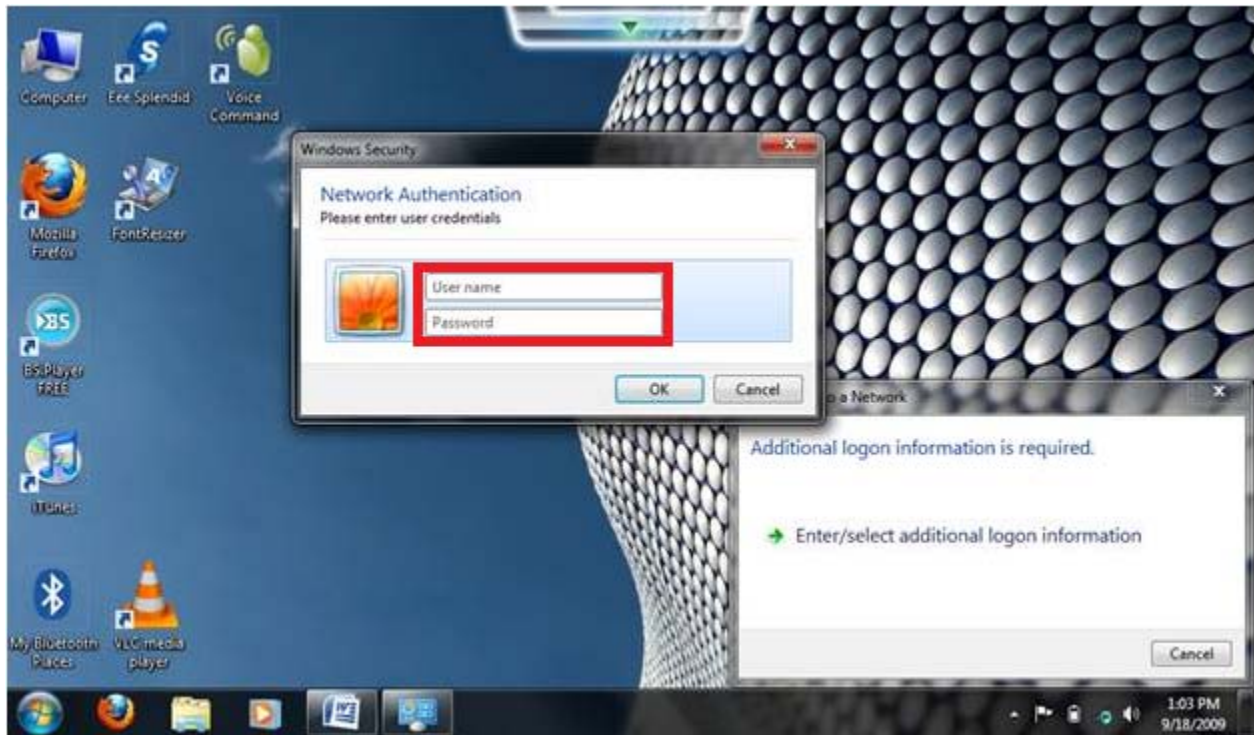


You should now be able to connect using your CLS username and password. Leave the Domain blank.

20. Click on the wireless icon at taskbar and look for Securewireless and Click "Connect".



22. Use your Onestop/Blackboard (Central Login Service) username and pw to login.



If you have any questions or issues with the Securewireless setup instructions, please contact our Help Desk at (513)556-Help (4357).