

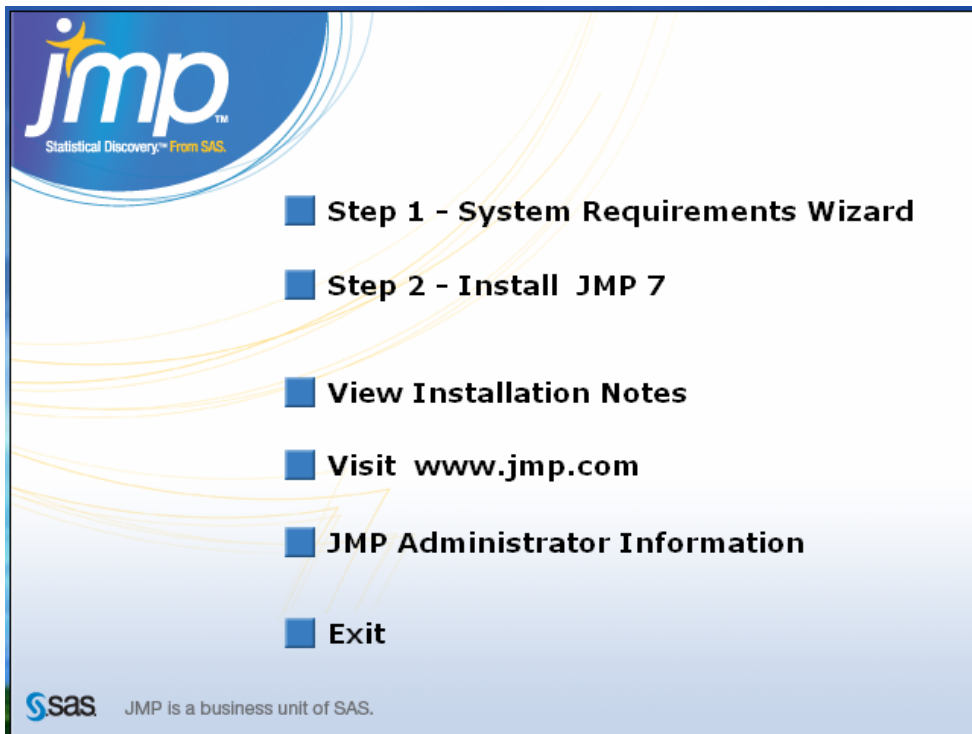
JMP 7.0 for Windows Installation Instructions

System Requirements

1. Windows 2000 w/SP4, Windows XP or Windows Vista.
2. Pentium II class processor or greater.
3. 128 MB RAM minimum (512 MB recommended)
4. 130 MB free disk space
5. Microsoft Internet Explorer 5.01 or higher
6. True (24 bit+) color with resolution of 1024x768 or greater
7. UNICODE compliant ODBC 3.0 or higher (required only if connecting to database)

Installation Instructions

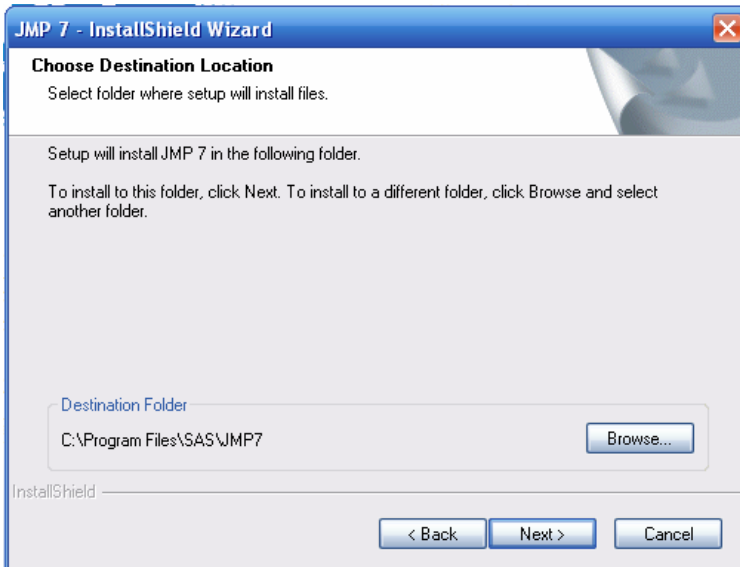
1. Insert CD. Click on *Step 1- System Requirements Wizard* to verify that your system meets the minimum system requirements.
2. Then Click on *Step 2- Install JMP 7*.



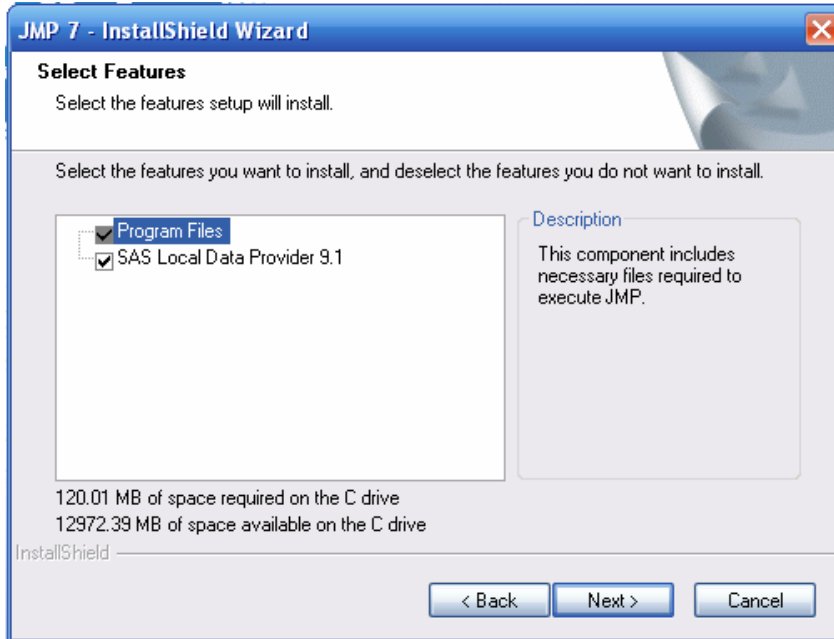
3. Close all programs. Then Click *Next*>



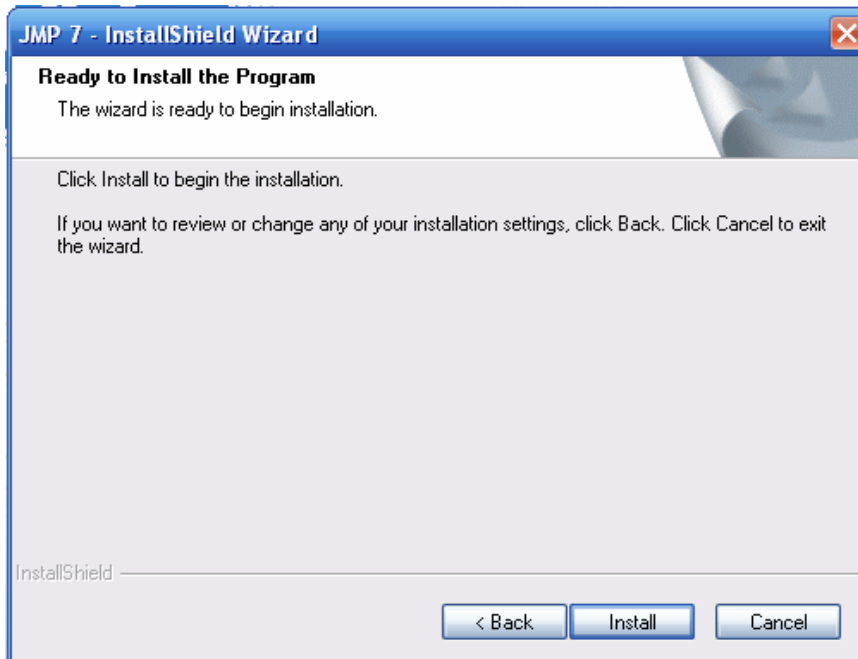
4. Choose your destination folder. Then Click *Next*>



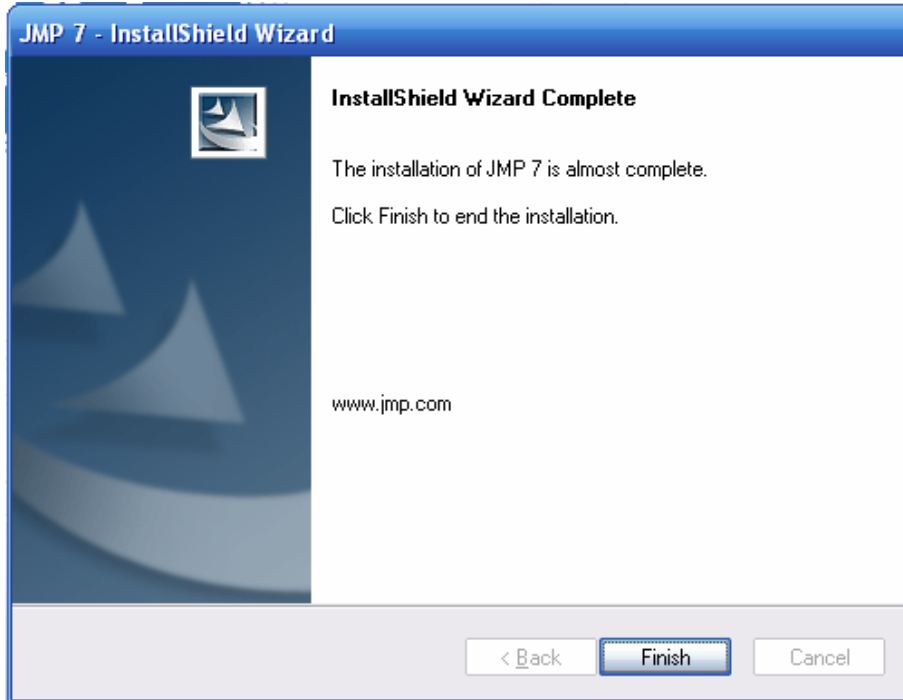
5. Click *Next*>



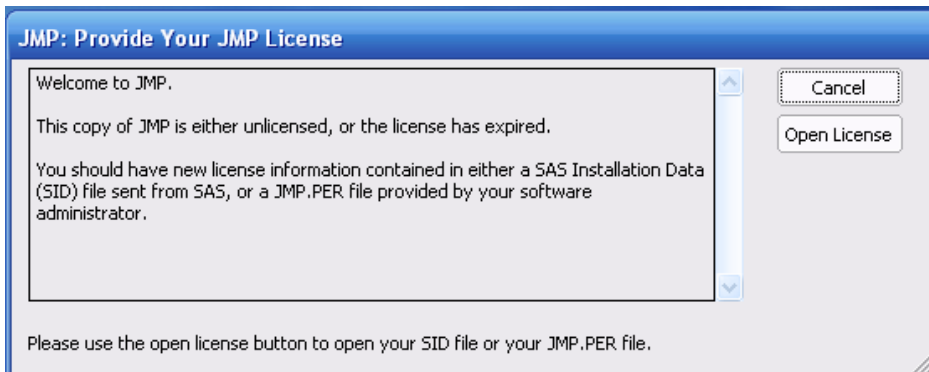
6. The program is now ready to install. Click *Install*.



7. Click *Finish*.

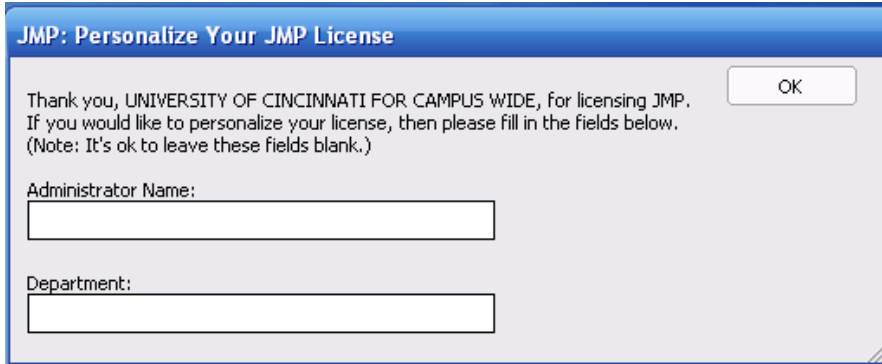


8. Eject the CD. Start JMP. (JMP is found in the Start menu > Programs.) Click *Open License*.



9. You should have received the license file in an email from software@uc.edu. Browse to location of the JMP license file, and then click Choose.

10. Enter your name and department,, or leave these fields blank. Click *OK*.



The image shows a dialog box titled "JMP: Personalize Your JMP License". The dialog box has a blue header bar with the title. Below the header, there is a message: "Thank you, UNIVERSITY OF CINCINNATI FOR CAMPUS WIDE, for licensing JMP. If you would like to personalize your license, then please fill in the fields below. (Note: It's ok to leave these fields blank.)". In the top right corner of the dialog box, there is an "OK" button. Below the message, there are two input fields. The first is labeled "Administrator Name:" and the second is labeled "Department:". Both input fields are currently empty.

11. JMP will now start.