

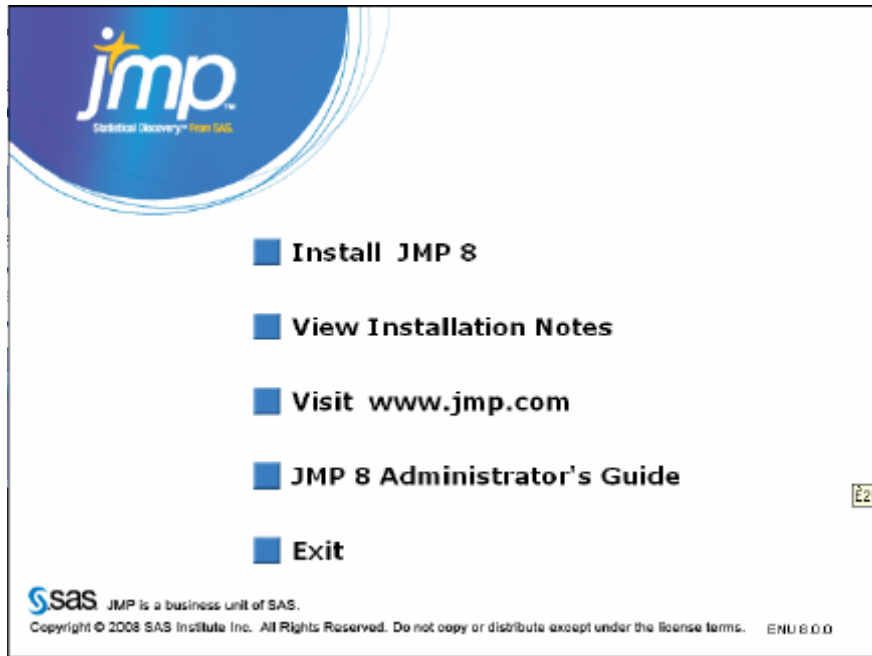
JMP 8.0 for Windows Installation Instructions

System Requirements

1. Windows XP w/ SP2, Windows Vista (Vista Home Basic edition not supported)
2. Pentium 4, Athlon and higher.
3. 512 MB minimum (1G+ recommended)
4. 130 MB free disk space (200 MB recommended)
5. Microsoft Internet Explorer 6.0 or higher
6. True (24 bit+) color with resolution of 1024x768 or greater; video card with hardware accelerated 2D and 3D drivers recommended
7. UNICODE compliant ODBC 3.0 or higher (required only if connecting to database)

Installation Instructions

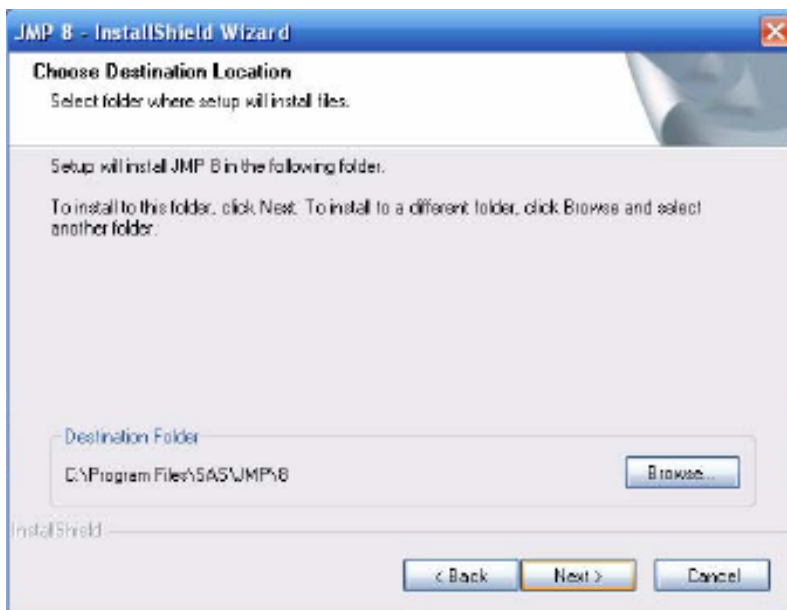
1. Insert CD. Click on *Install JMP 8*.



2. Close all programs. Then Click *Next*>



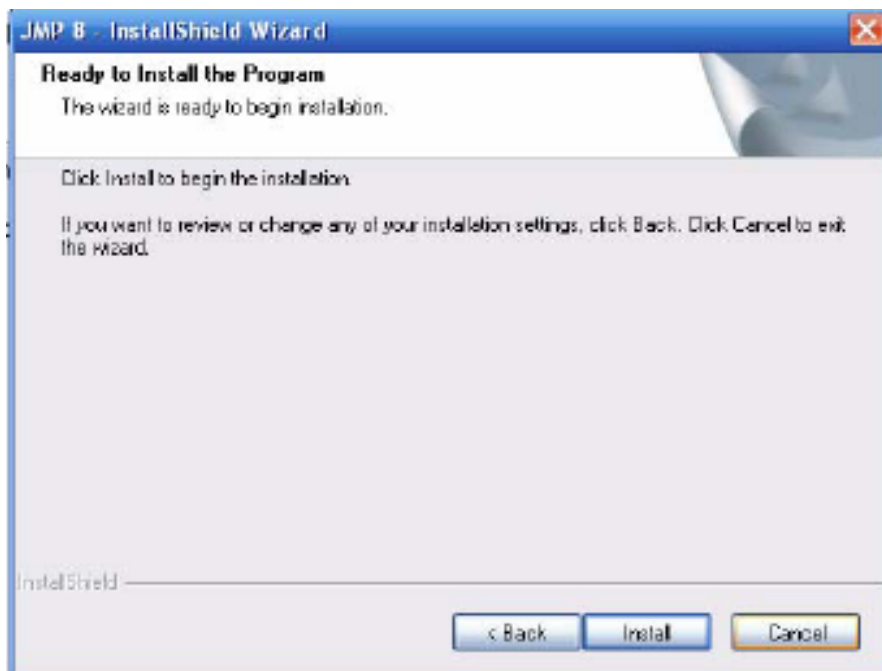
3. Choose your destination folder. Then Click *Next*>



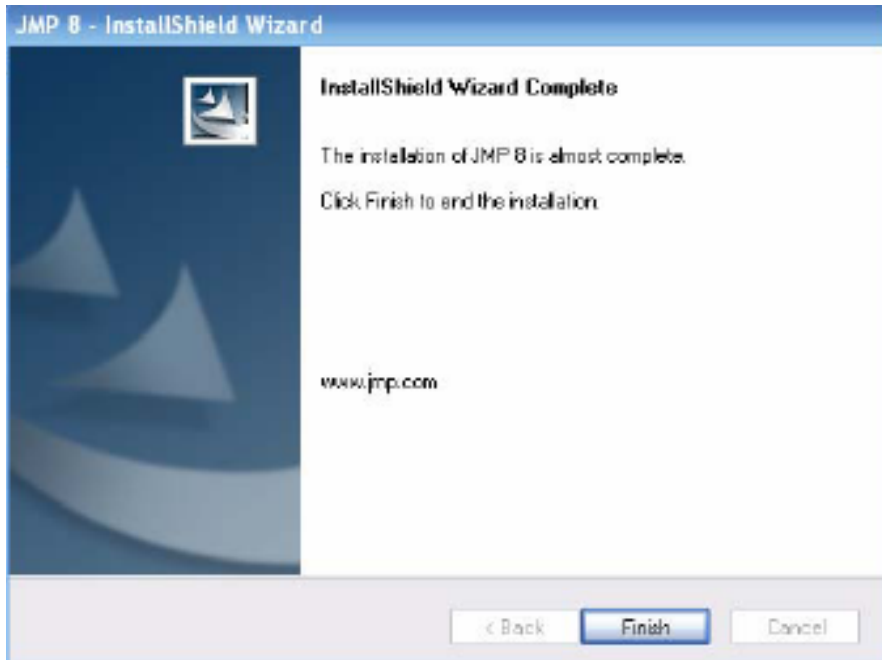
4. Click *Next*>



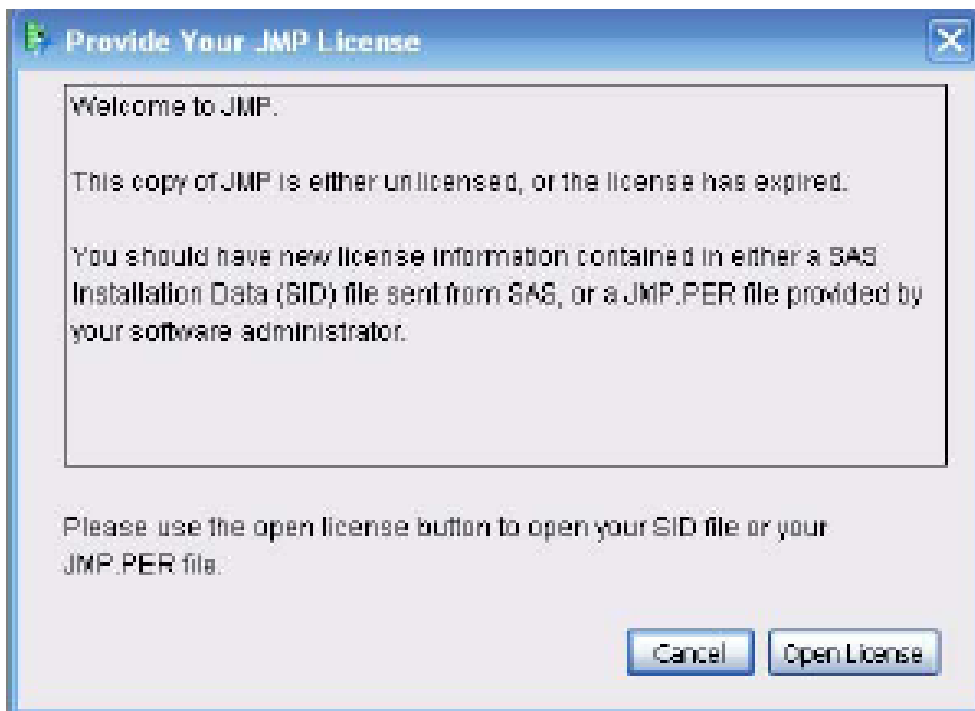
5. The program is now ready to install. Click *Install*.



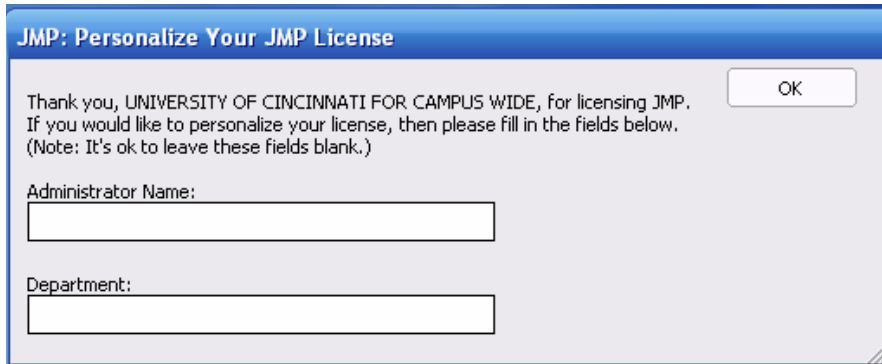
6. Click *Finish*.



7. Eject the CD. Start JMP. (JMP is found in the Start menu > Programs.) Click *Open License*.



8. You should have received the license file in an email from software@uc.edu. Browse to location of the JMP license file, and then click Choose.
9. Enter your name and department, or leave these fields blank. Click *OK*.



The screenshot shows a dialog box titled "JMP: Personalize Your JMP License". The text inside reads: "Thank you, UNIVERSITY OF CINCINNATI FOR CAMPUS WIDE, for licensing JMP. If you would like to personalize your license, then please fill in the fields below. (Note: It's ok to leave these fields blank.)" There are two text input fields: "Administrator Name:" and "Department:". An "OK" button is located in the top right corner of the dialog box.

10. JMP will now start.