

## SAS 9.1.3 Installation Instructions

### Windows 2003, XP, 2000, NT

#### SAS 9.1.3 Client – Server Installation

##### Introduction:

In a server/client installation, the majority of the SAS System components are stored on the server. Only a few essential files are stored on the client.

##### Advantages:

- The amount of disk space required to run SAS is minimized.
- Any configuration changes (such as updating the SAS Installation Data file) can be done on the server and inherited by all the clients.

##### Disadvantages:

- All the clients are dependent on the server to operate.
- Performance may be hindered due to the amount of network traffic and any additional load on the server.

## Server Installation Guidelines

The server installation saves SAS System components in a folder on the server. It creates the Image for Client Users used for client installations.

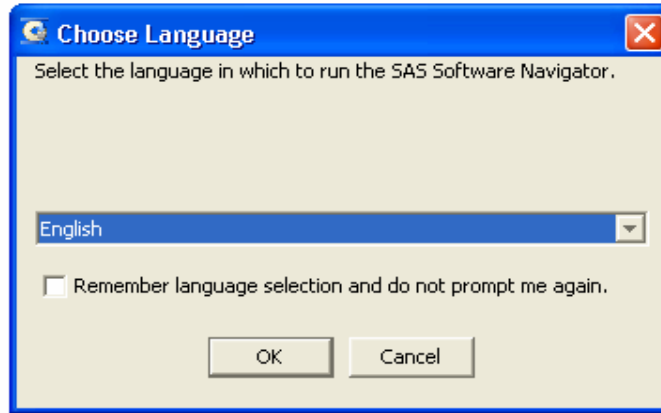
### Pre-Install Checklist

1. Create a network drive on the server which is accessible to the clients.
2. Check the network drive and ensure that enough space (at least 750 MB) is available for the installation.
3. Close all programs including virus-scanning programs before proceeding with the installation.
4. You will need the SAS 9.1.3 CD installation set. This set includes these CDs:
  - SAS Setup Disk
  - SAS Software Disk 1
  - SAS Software Disk 2
  - SAS Software Disk 3
  - SAS/SECURE Disk
  - SAS Shared Components Disk
5. You should have received an email from [Software@uc.edu](mailto:Software@uc.edu) containing the SID (SAS Installation Data, includes setinit) file as an attachment. Save the file to your desktop.

## Installation Instructions: Server Installation

Note: All Server installation steps are to be done from one of the clients connected to the server via network drive.

1. Insert the SAS Setup Disk in CD-ROM drive of any client. Choose the Language for the SAS Software Navigator. Click **OK**.



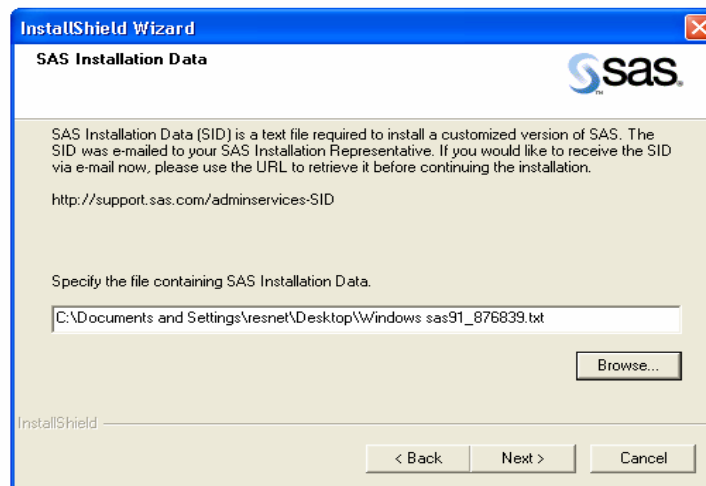
2. The SAS Software Navigator will launch from the SAS Setup Disk. Click the **Create a SAS Image for Deployment** link under Administrator Steps.



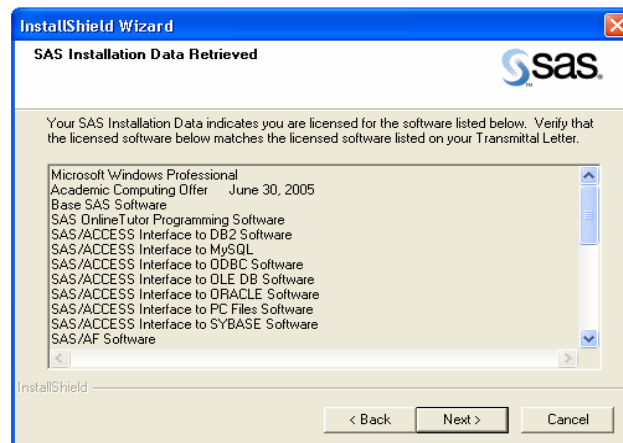
3. Click **Next** in the Welcome window.



4. Click **Browse** and Select the SID file saved in the desktop (Step 5 of Pre-Install Checklist). Click **Next**.



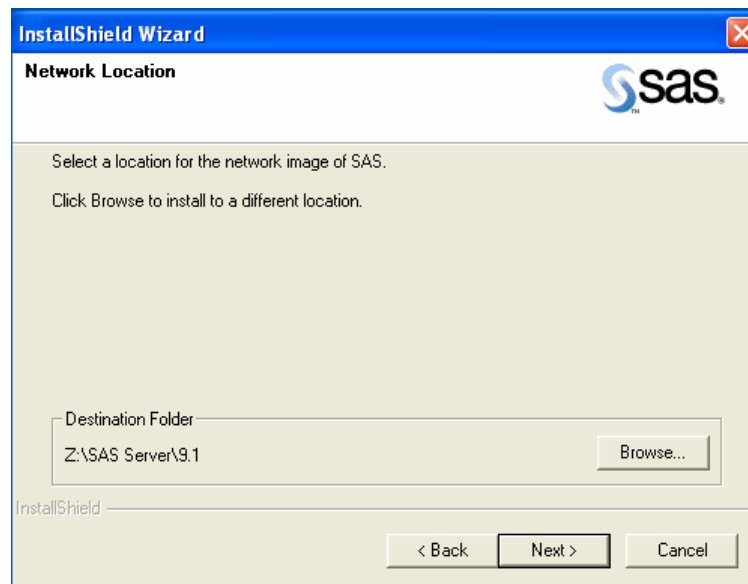
5. Click **Next** in the following Screen.



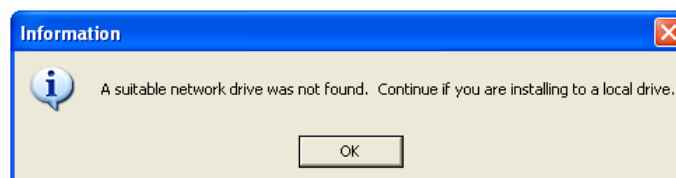
6. Choose **Client Users** as the End User Type. Click **Next**.



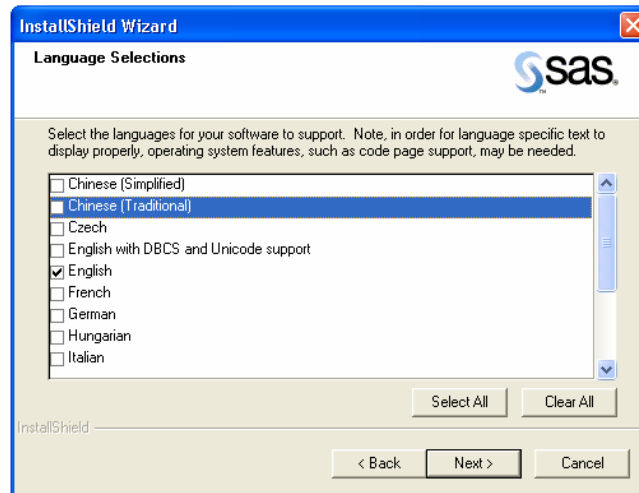
7. Select the Destination Folder in the server to install the SAS Image for Client users. This should be a folder located on the server and mapped on to the client. Click **Next**.



8. If no valid Network drive is present, the following information message will appear. Click **OK** to install to a folder in the local drive and then when the above screen appears click cancel to abort SAS installation. Create a Map drive with server and then continue from Step 1.



9. Select the Languages required to be supported. Click **Next**.



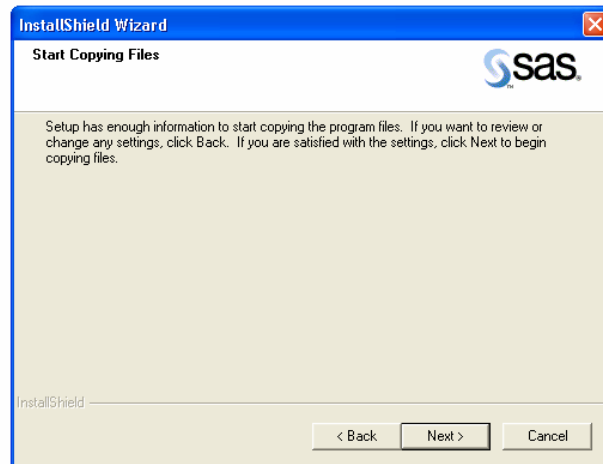
10. Click **Select Licensed Software** button. This will select the components of SAS which are included in the UCit site license. Click **Next**.



11. If you want to integrate the installation with a Metadata Server, Click **Integrate a SAS Metadata Server with this installation** checkbox and enter the required details. After that or Otherwise, Click **Next**.



12. Confirm the requirements. Click **Next**.



13. Insert the necessary CDs when prompted to do so.

14. Click **Finish** to end the installation.



## Client Installation Guidelines

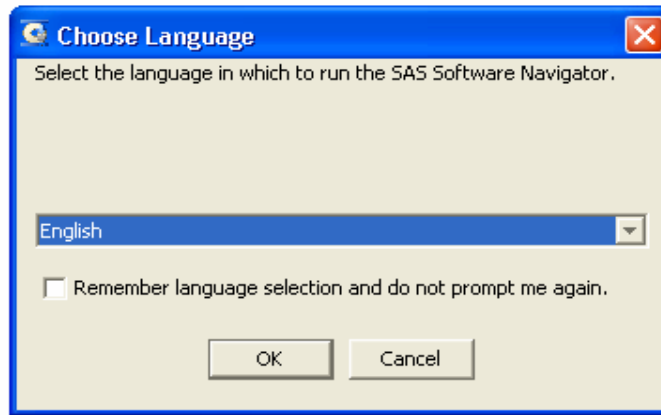
The client installation uses the Image for Client Users to install the software you need to run SAS in association with shared files from a server.

### Pre-Install Checklist

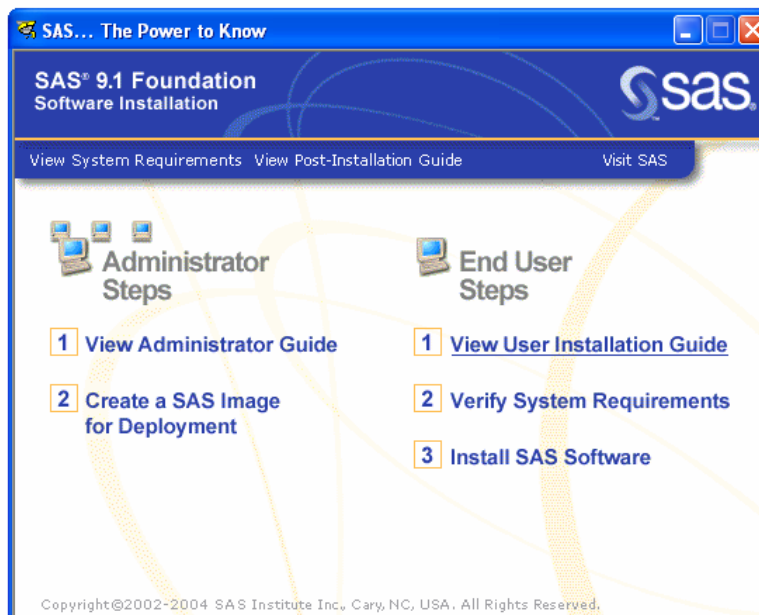
1. If an older version of SAS 9.1 has been installed on your computer, you will need to remove it before you install SAS 9.1.3. Earlier versions of SAS, such as 8.2, may be kept or removed.
2. Close all programs including virus-scanning programs before proceeding with the installation.
3. You will need the network path in which the SAS Image for Client Users has been deployed. Please contact your Administrator to get the network address.

## Installation Instructions

1. Run the Setup.exe (<SourcePath>\Setup.exe) file in the SAS Image for Client Users folder (specified in Server Installation Instructions step 9).
2. Choose the Language for the SAS Software Navigator. Click **OK**.

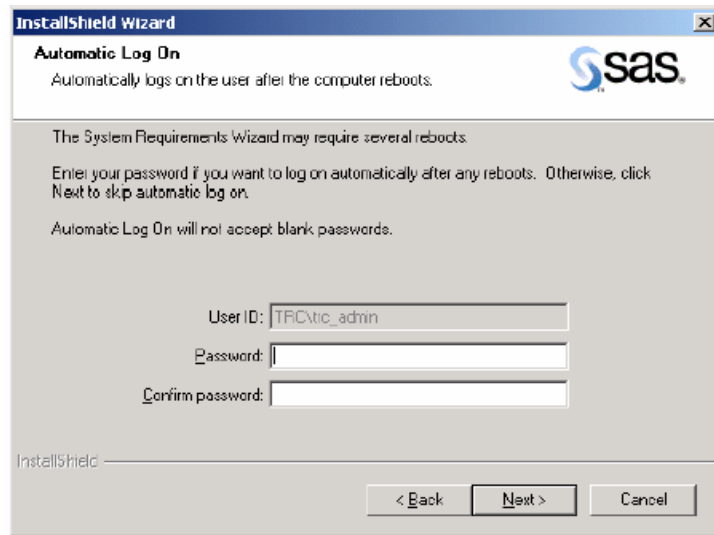


3. The SAS Software Navigator will launch from the SAS Setup Disk. Click the **Verify System Requirements** link under End User Steps and follow the instructions.



4. System Requirements Wizard Dialogs & Directions

**Read** *Welcome to the System Requirements Wizard*  
Click **Next**.



**Read** *Automatic Log On*

The System Requirements Wizard may require several reboots. If you want to log on automatically after any reboots, enter your password in the Password field. This is optional, and you can click Next to skip automatic log on. If you enter a password, you will need to enter it again in the Confirm password field. Click **Next**.

**Read** *System Components Update* if the SRW displays this window

This window displays the names of the system components that will be updated on your system.

Click **Next**.

**Read** *Restarting Windows* if the SRW displays this window

This window displays the names of the system components that have been updated on your system, and indicates that your computer must be rebooted. SAS recommends that you reboot your computer now.

Click on one of the two radio buttons:

- **Yes**, I want to restart my computer now.
- **No**, I will restart my computer later.

If you choose to reboot, close all open applications and remove any floppy disks from the disk drives.

**Verify** that all virus-scanning software has been disabled after the computer restarts.

Setup will resume when the computer restarts. If Setup does not resume after the computer reboots, restart Setup from the SAS Software Navigator.

Click **Finish**.

**Read** *System Update Not Required* if the SRW displays this window

This window indicates that the SRW has verified that your system already meets the minimum system requirements for the selected software.

Click **Finish**.

**Read** *System Update Finished*

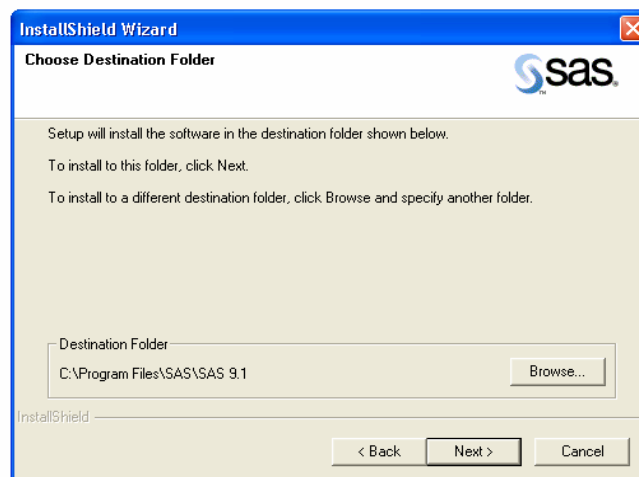
This dialog indicates that the System Requirements Wizard has updated your system.

Click **Finish**.

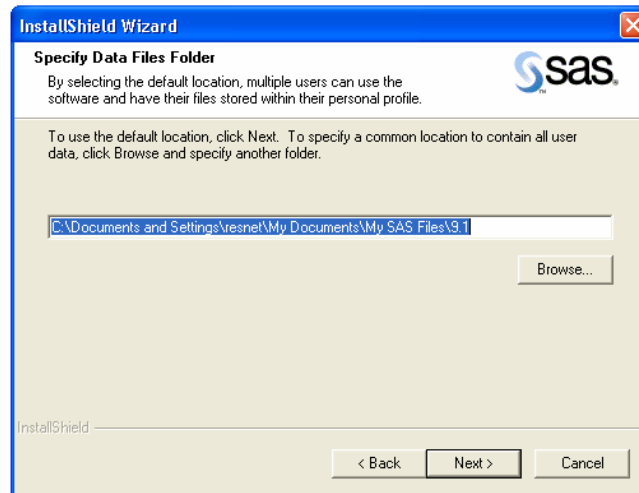
5. After System Requirements Wizard completes, you will get back to the SAS Software Navigator Window in Step 3. Click the **Install SAS Software** link under End User Steps and follow the instructions.
6. **Read *Welcome to the SAS Setup Wizard***. Click **Next**.



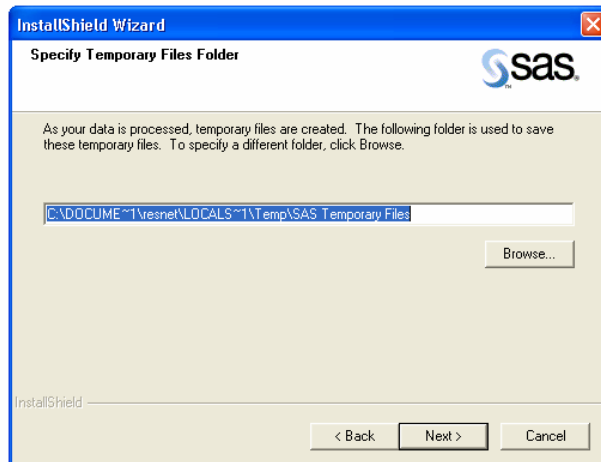
7. Select the Destination Folder to install SAS (default folder recommended). Click **Next**.



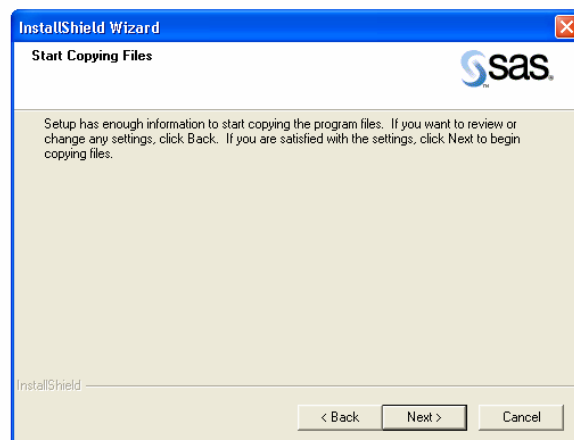
9. Select the Data Files Folder (default recommended). Click **Next**.



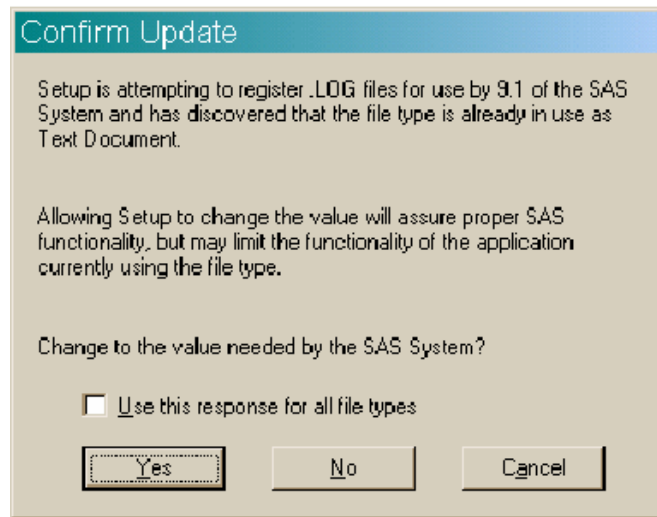
10. Specify a Temporary Files Folder (default recommended). Click **Next**.



11. Confirm the requirements. Click **Next**.



12. Click **Yes** (recommended) to assign .LOG files to SAS, else click **No**.



13. Do the same as STEP 11 for files of other type like .SC1, .SC2, etc.

14. Click **Finish** to end the installation.

