

## SAS 9.1.3 Installation Instructions Windows 2003, XP, 2000, NT

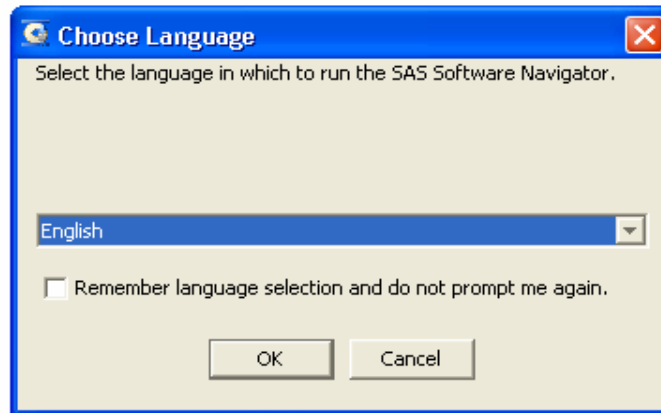
### Workstation Installation Guidelines

#### Pre-Install Checklist

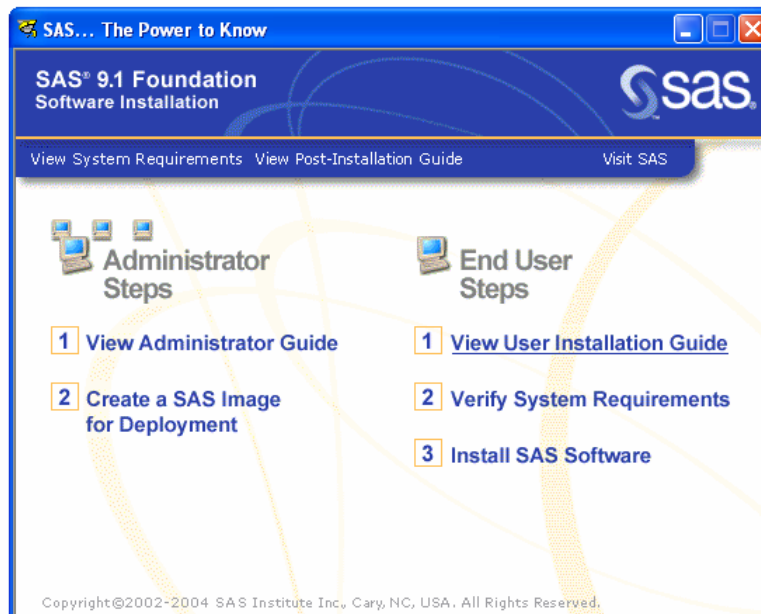
1. Check the drive space and ensure that enough space (at least 750 MB) is available for the installation.
2. If an older version of SAS 9.1 has been installed on your computer, you will need to remove it before you install SAS 9.1.3. Earlier versions of SAS, such as 8.2, may be kept or removed.
3. Close all programs including virus-scanning programs before proceeding with the installation.
4. You will need the SAS 9.1.3 CD installation set. This set includes these CDs:
  - SAS Setup Disk
  - SAS Software Disk 1
  - SAS Software Disk 2
  - SAS Software Disk 3
  - SAS/SECURE Disk
  - SAS Shared Components Disk
5. You should have received an email from [Software@uc.edu](mailto:Software@uc.edu) containing the SID (SAS Installation Data, includes setinit) file as an attachment. Save the file to your desktop.

## Installation Instructions

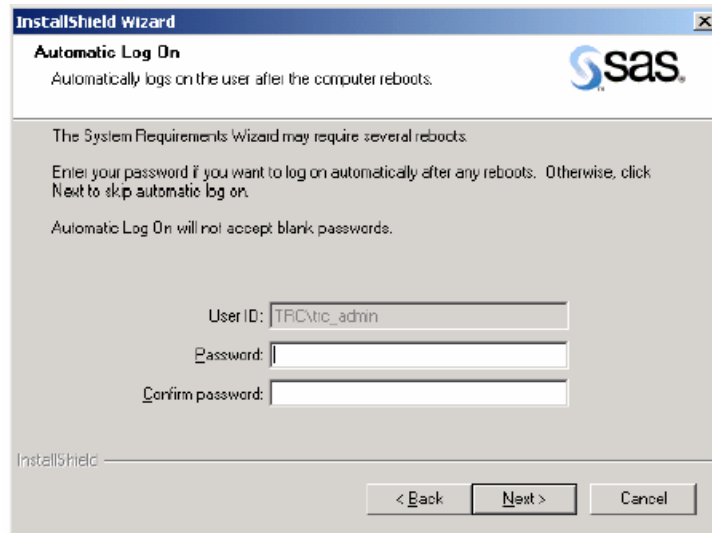
1. Insert the SAS Setup Disk in your CD-ROM drive. Choose the Language for the SAS Software Navigator. Click **OK**.



2. The SAS Software Navigator will launch from the SAS Setup Disk. Click the **Verify System Requirements** link under End User Steps and follow the instructions.



3. System Requirements Wizard Dialogs & Directions. **Read** *Welcome to the System Requirements Wizard*. Click **Next**.



**Read** *Automatic Log On*

The System Requirements Wizard may require several reboots. If you want to log on automatically after any reboots, enter your password in the Password field. This is optional, and you can click Next to skip automatic log on. If you enter a password, you will need to enter it again in the Confirm password field. Click **Next**.

**Read** *System Components Update* if the SRW displays this window  
This window displays the names of the system components that will be updated on your system.  
Click **Next**.

**Read** *Restarting Windows* if the SRW displays this window  
This window displays the names of the system components that have been updated on your system, and indicates that your computer must be rebooted. SAS recommends that you reboot your computer now.  
Click on one of the two radio buttons:  
• **Yes**, I want to restart my computer now.  
• **No**, I will restart my computer later.  
If you choose to reboot, close all open applications and remove any floppy disks from the disk drives.

**Verify** that all virus-scanning software has been disabled after the computer restarts.  
Setup will resume when the computer restarts. If Setup does not resume after the computer reboots, restart Setup from the SAS Software Navigator.  
Click **Finish**.

**Read** *System Update Not Required* if the SRW displays this window  
This window indicates that the SRW has verified that your system already meets the minimum system requirements for the selected software.  
Click **Finish**.

**Read** *System Update Finished*

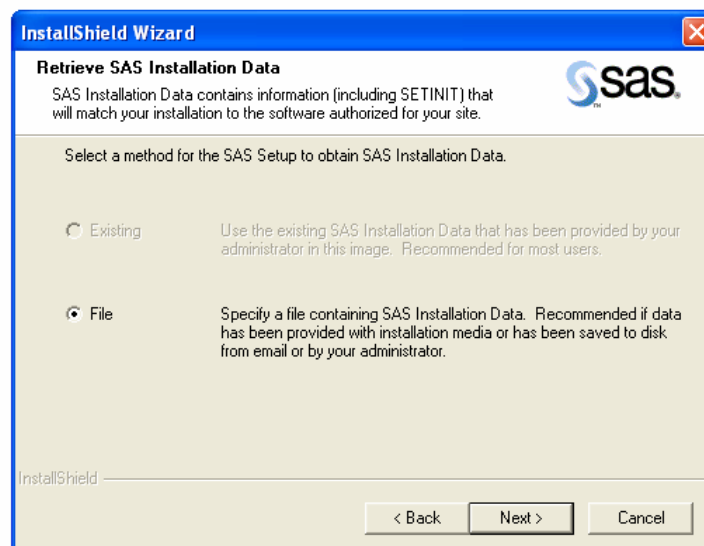
This dialog indicates that the System Requirements Wizard has updated your system.

Click **Finish**.

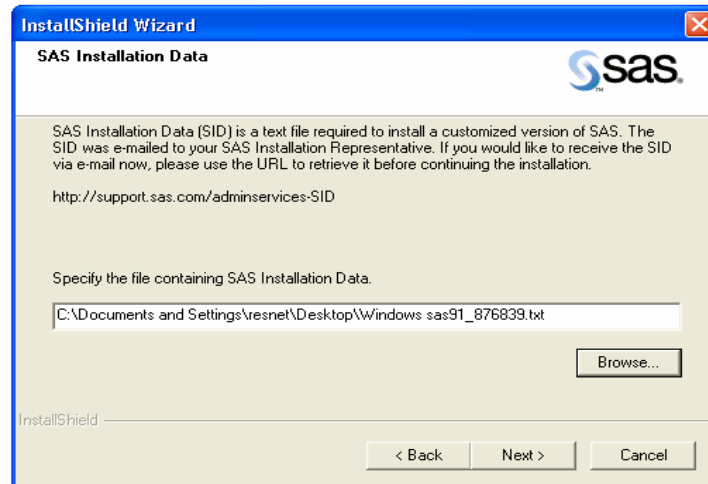
4. After System Requirements Wizard completes, you will get back to the SAS Software Navigator Window in Step 2. Click the **Install SAS Software** link under End User Steps and follow the instructions.
5. **Read** *Welcome to the SAS Setup Wizard*. Click **Next**.



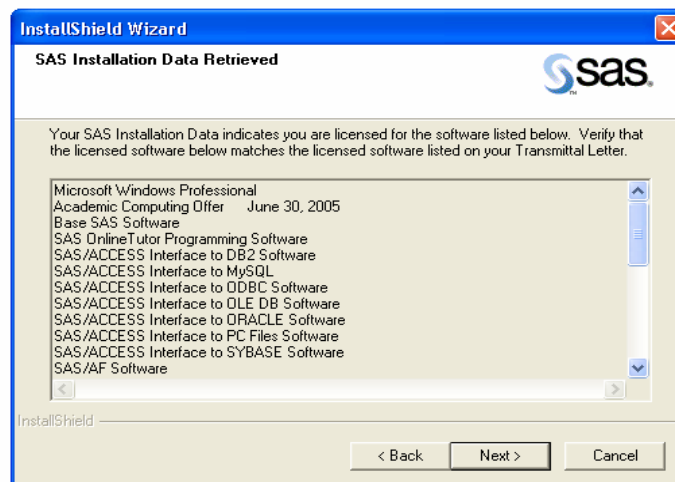
6. Choose the option **File** as the method for obtaining SAS Installation Data. Click **Next**.



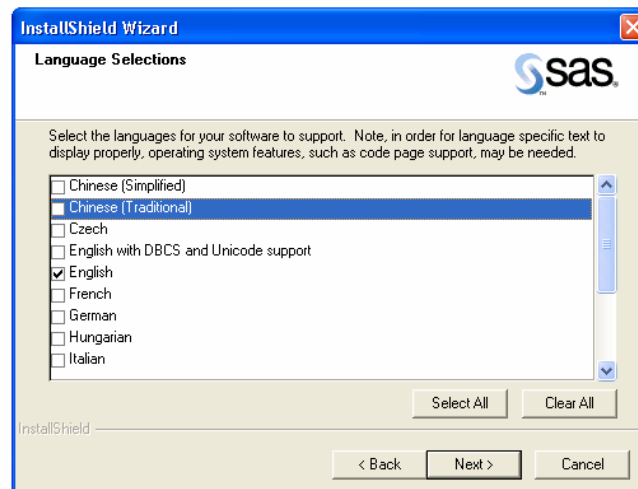
7. Click **Browse** and Select the SID file saved in the desktop (Step 5 of Pre-Install Checklist). Click **Next**.



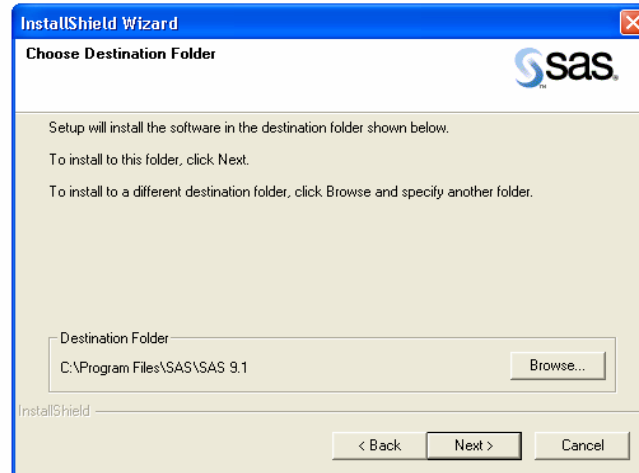
8. Click **Next** in the following Screen.



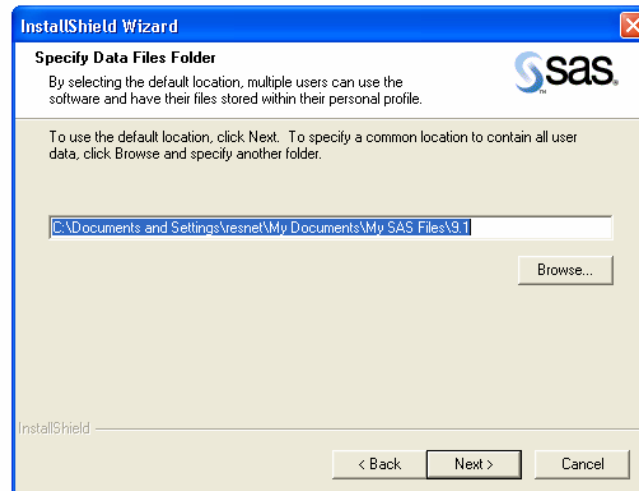
9. Select the Languages required to be supported. Click **Next**.



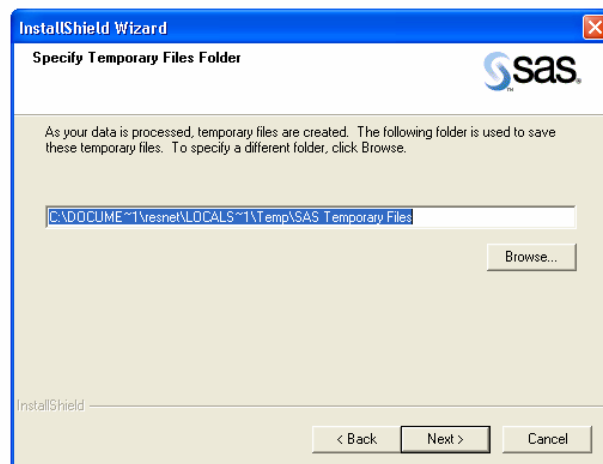
10. Select the Destination Folder to install SAS (default folder recommended). Click **Next**.



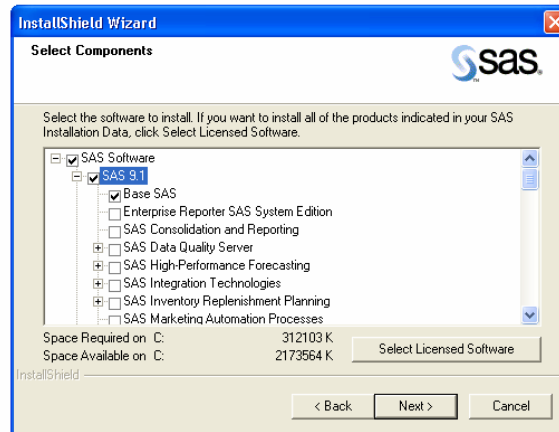
11. Select the Data Files Folder (default recommended). Click **Next**.



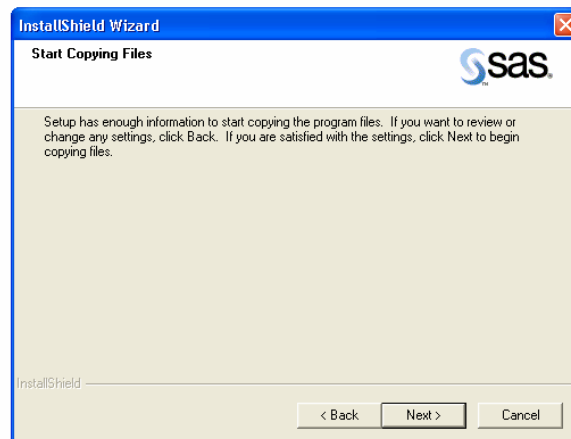
12. Specify a Temporary Files Folder (default recommended). Click **Next**.



13. Click **Select Licensed Software** button. This will select the components of SAS which are included in the UCit site license. Click **Next**.

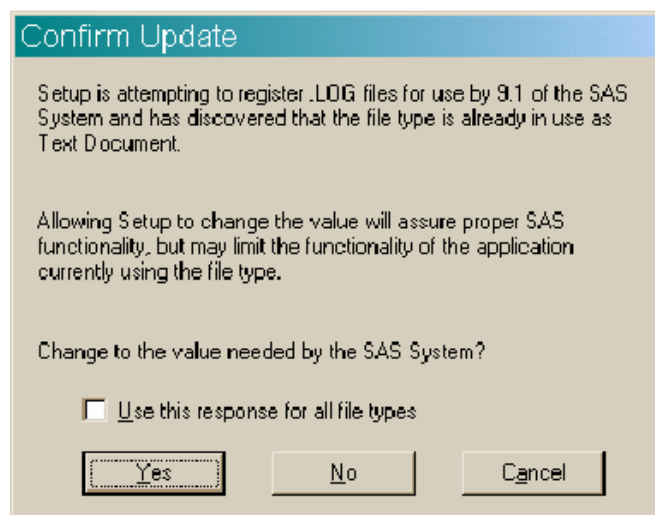


14. Confirm the requirements. Click **Next**.



15. Insert the necessary CDs when prompted to do so.

16. Click **Yes** (recommended) to assign .LOG files to SAS, else click **No**.



17. Do the same as STEP 17 for files of other type like .SC1, .SC2, etc.

18. Click **Finish** to end the installation.

