

SPSS 16.0 for Windows XP/Vista Server Client Install Network Authorization Code

Before You Start

Please make sure the following is available before you start the installation process.

- 1) The SPSS CD ordered by you.
- 2) The Network Authorization Code that was sent to you in email from software@uc.edu.

If you cannot find your Network Authorization Code, please contact the Software Distribution Office.

To ensure that you set up the network license correctly, follow these steps:

Step 1: Install the network license manager. The network license manager will serve up the network licenses to end users.

Step 2: License SPSS for Windows. This action will give the license manager the required information for serving up the licenses.

Step 3: Install SPSS for Windows on your local desktop computers (clients). During the installation you will specify the computer on which the license manager is running. When an end user tries to launch SPSS for Windows, the product communicates with this license manager to get a license. If a license is available, SPSS for Windows launches.

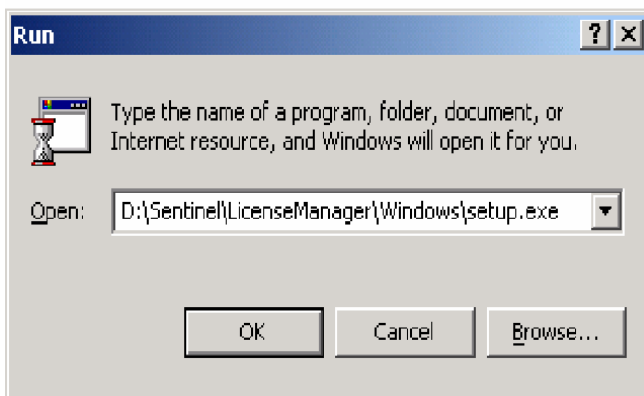
Sample Server/Client Installation - Instructions for Server

Step 1: Installing the SPSS Sentinel License Manager

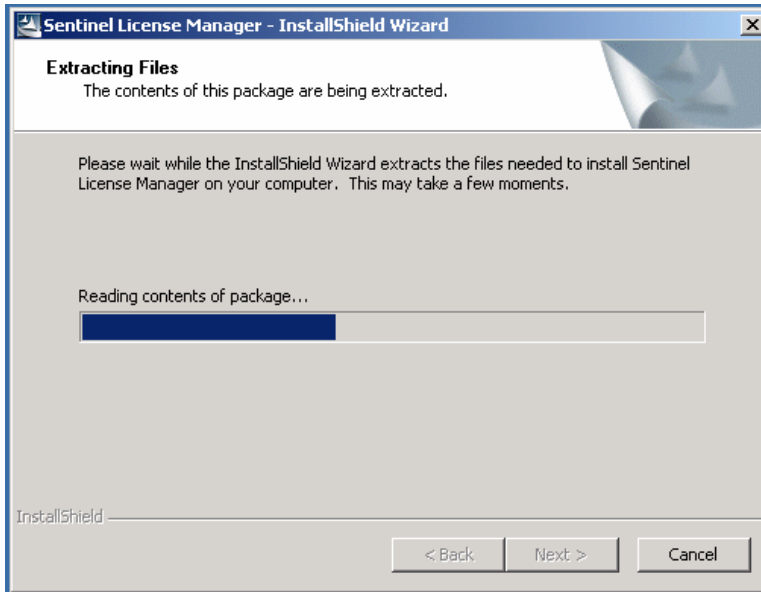
1. Insert the CD-ROM into the CD-ROM drive of the network computer on which you want to run the license manager.
2. From the Windows **Start** menu, choose **Run**.



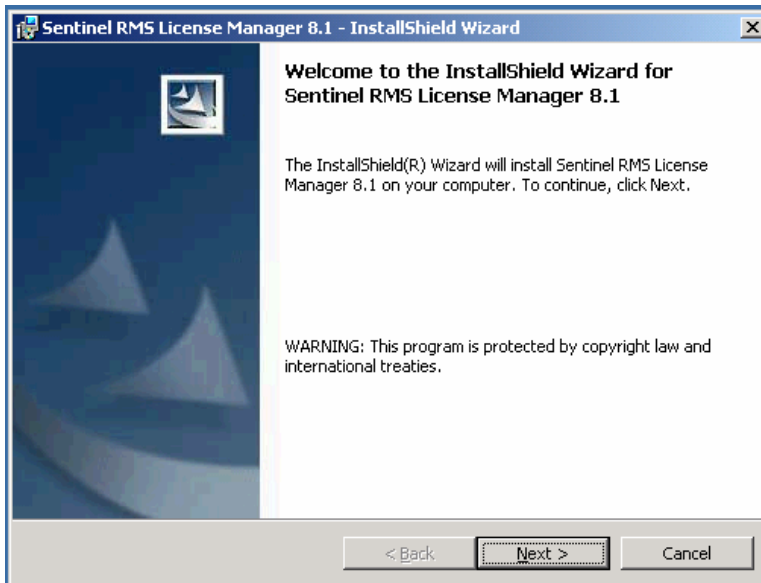
3. In the Run dialog box, **type** *D:\Sentinel\LicenseManager\Windows\setup.exe*, where D is your CD-ROM drive. If you are not using D for the CD-ROM drive, enter the correct drive location. Click OK.



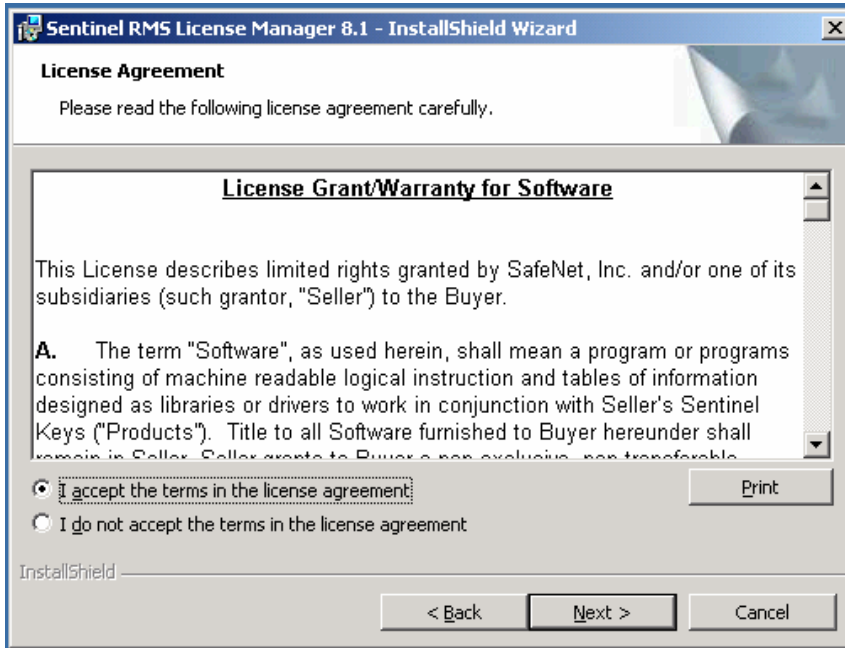
4. The SPSS Sentinel License Manager will prepare to install



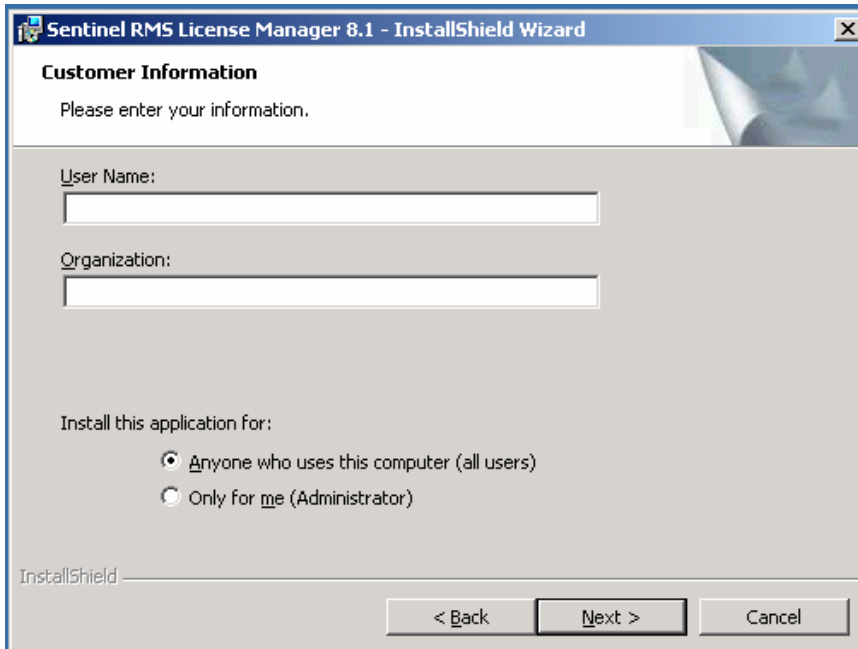
5. The welcome to the install shield wizard will open. **Click Next>**



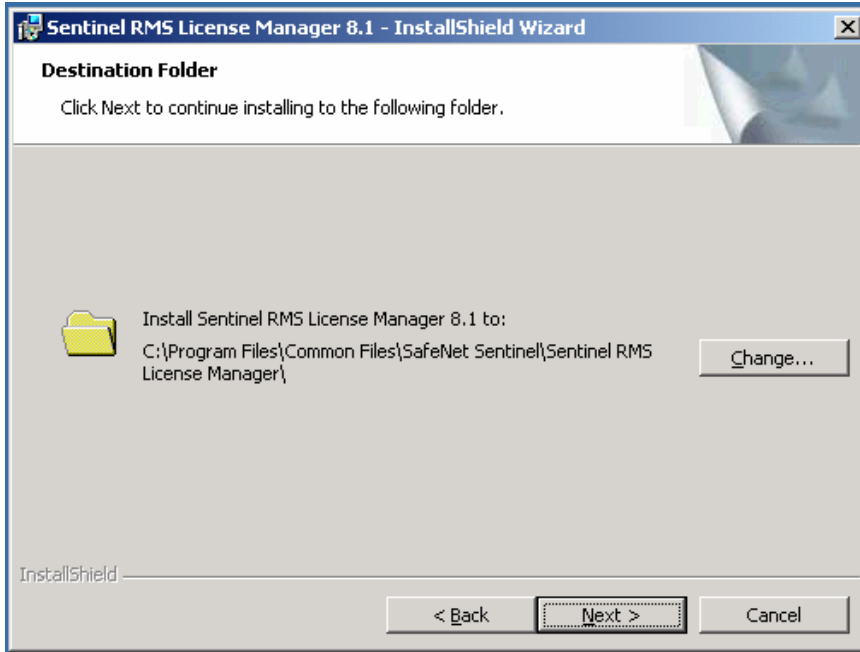
- In the License Agreement window, select *I accept the terms in the license agreement*. Then **click Next>**



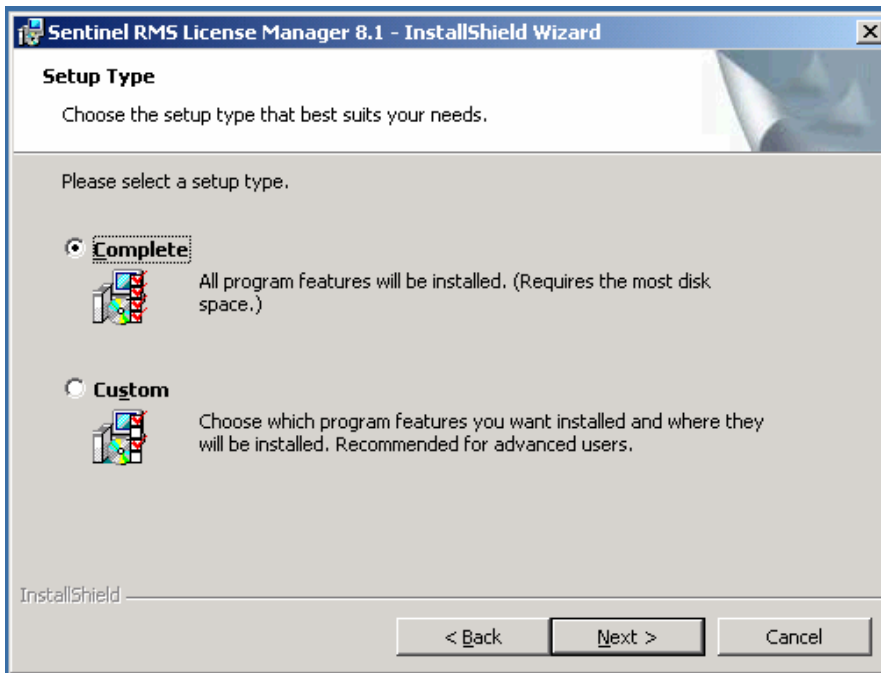
- Enter your information in the Customer information window. **Click Next>**



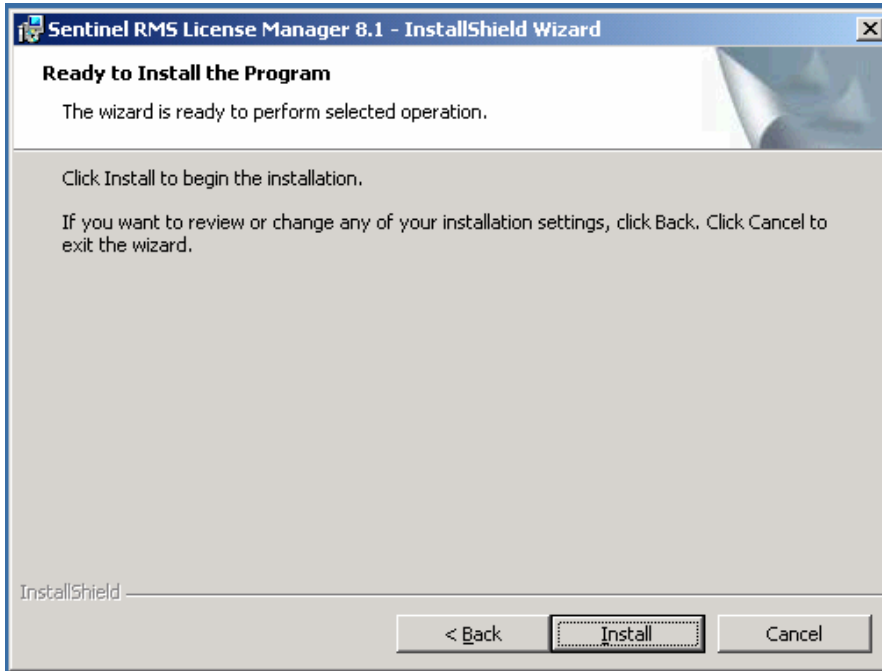
8. The wizard will ask for destination folder location. **Click *Next*>** to use the default location



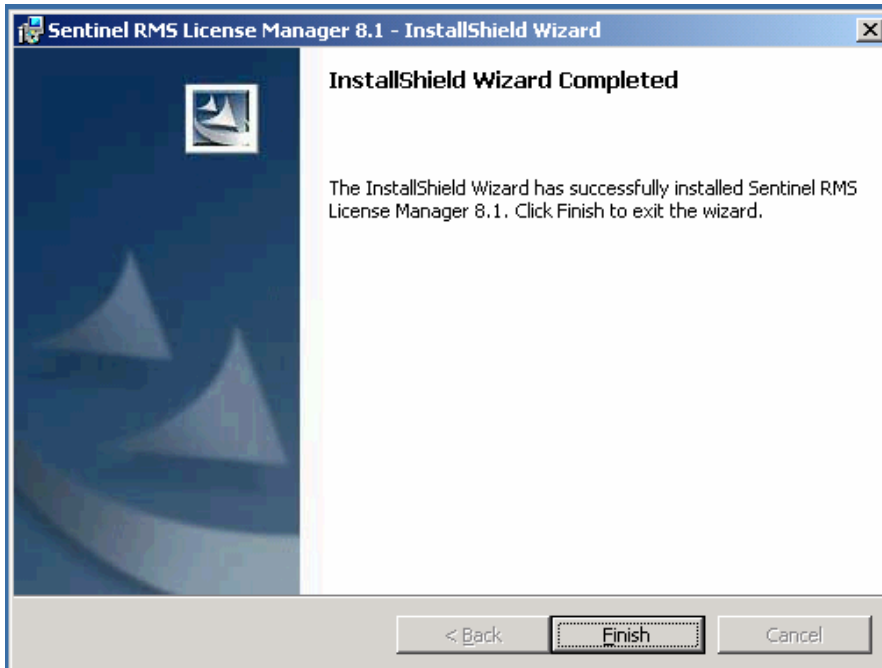
9. Choose the type that best suits your needs. **Click *Next*>**



10. **Click Install** on the next screen to install the License Manager in the location specified in the previous step.



11. **Click Finish** to complete License Manager Installation.

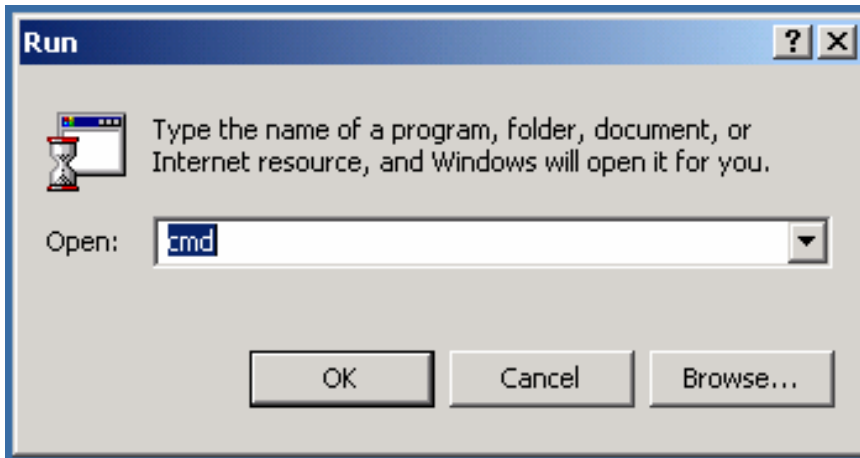


Step 2: Licensing SPSS for Windows

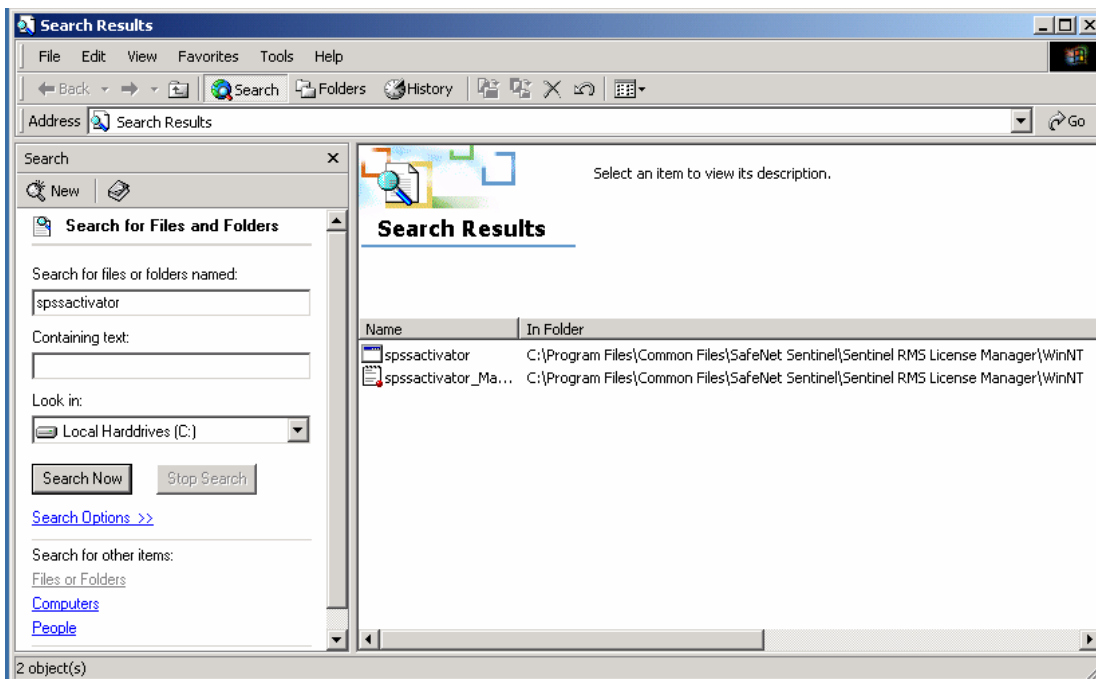
After installing the License Manager, use spssactivator to apply your Network Authorization Code. Please note that licenses are tied to the network computer's hardware with a lock code. If you replace the network computer or its hardware, you will have a new lock code. The license is sensitive to time changes. If you must change the system time and then cannot run the product, contact the Software Distribution Office.

Please follow the steps to license SPSS.

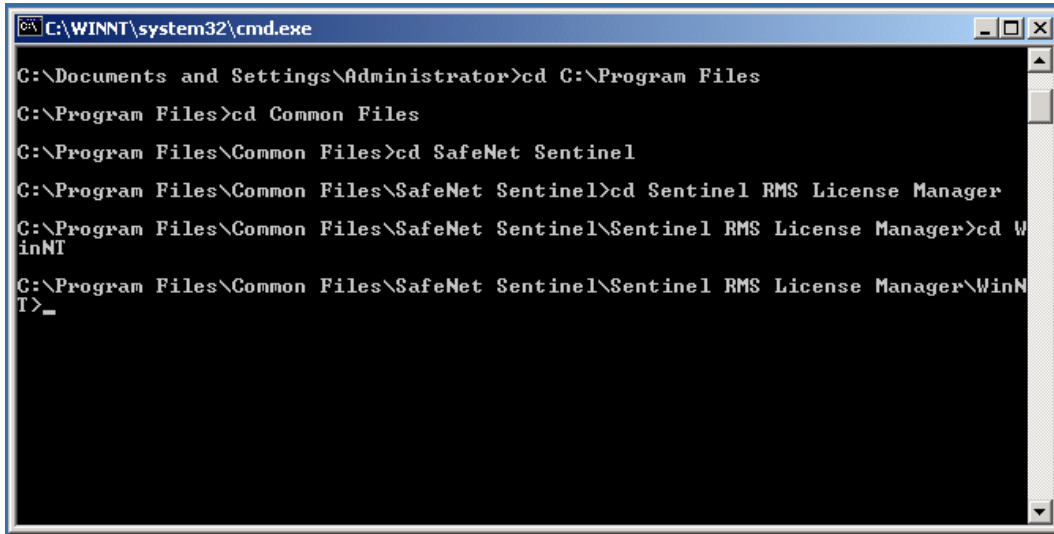
1. From the Windows **Start** menu, open a command prompt (**Start ->Run** and type “**cmd**”).



2. Search for the location of the Sentinel License Manager. (**Start ->Search** and type “**spssactivator**”).



3. Change the directory to the location of the Sentinel License Manager as found in the Search result.



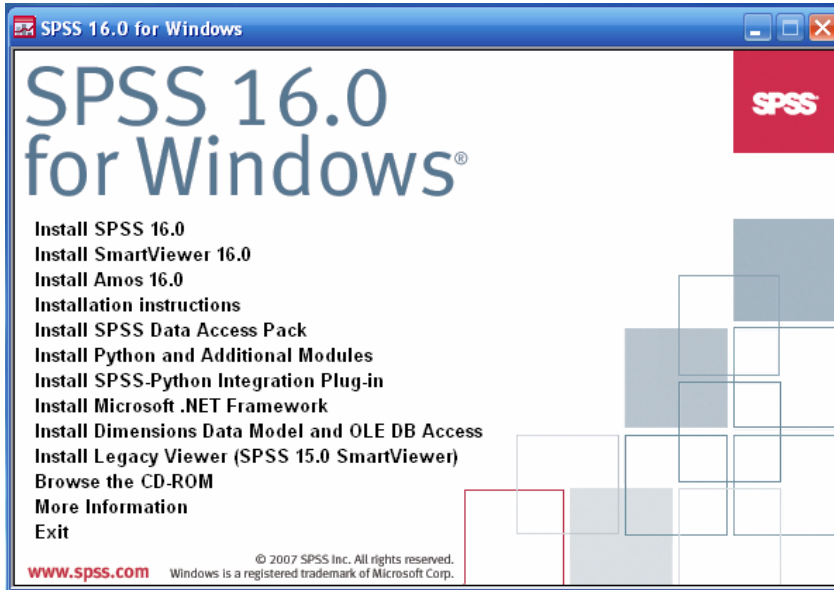
```
C:\WINNT\system32\cmd.exe
C:\Documents and Settings\Administrator>cd C:\Program Files
C:\Program Files>cd Common Files
C:\Program Files\Common Files>cd SafeNet Sentinel
C:\Program Files\Common Files\SafeNet Sentinel>cd Sentinel RMS License Manager
C:\Program Files\Common Files\SafeNet Sentinel\Sentinel RMS License Manager>cd WinNT
C:\Program Files\Common Files\SafeNet Sentinel\Sentinel RMS License Manager\WinNT>_
```

4. Run the spssactivator command line, e.g. spssactivator <authorization code>

Step 3: Installing SPSS Files on local desktop computers (Clients)

You can install SPSS on end users computers using a CDROM.

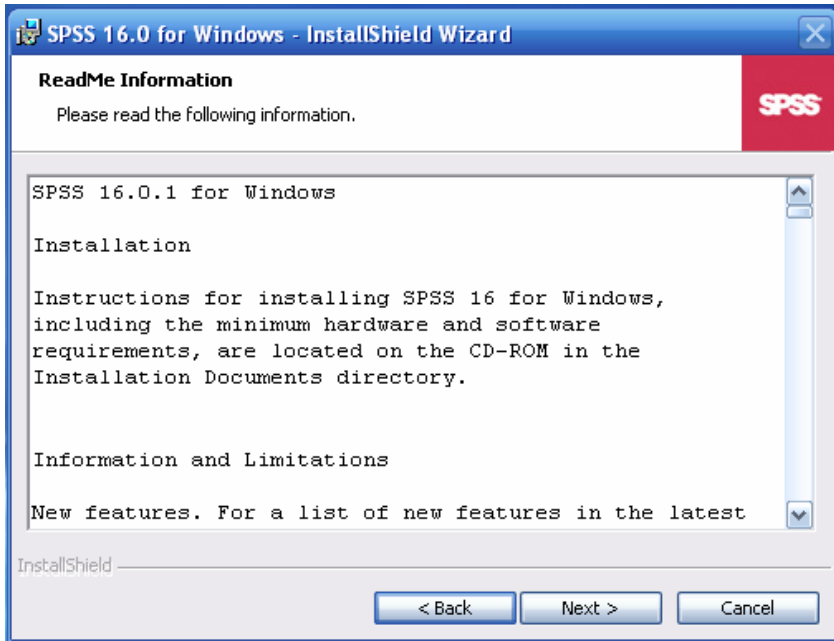
- 1) Insert the SPSS CD-ROM in to your computer. The auto play will display the menu. **Click Install SPSS** in the menu.



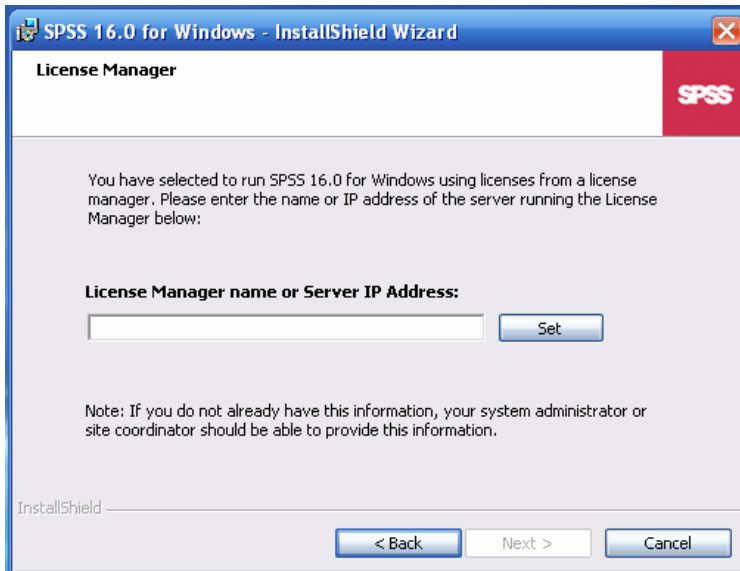
- 2) Choose **Network License** in type of license and **Click Next >**



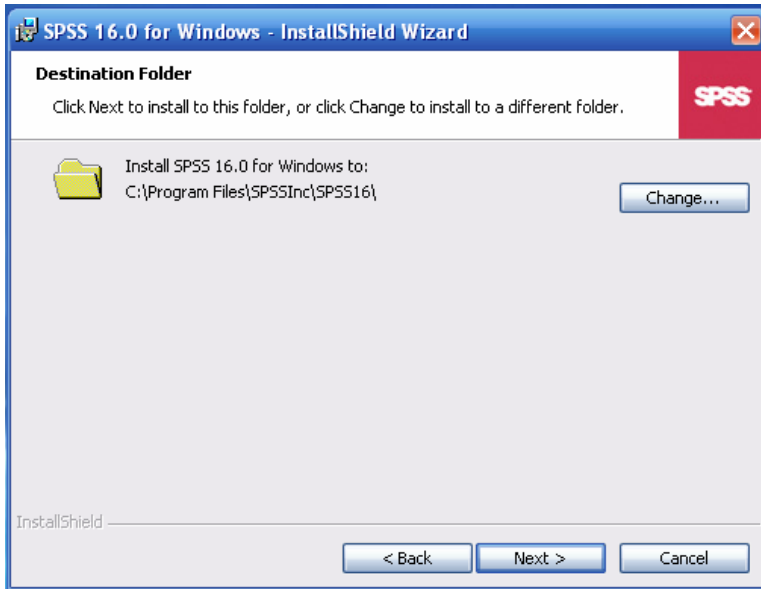
- 3) Read the licensing agreement and **click Next**



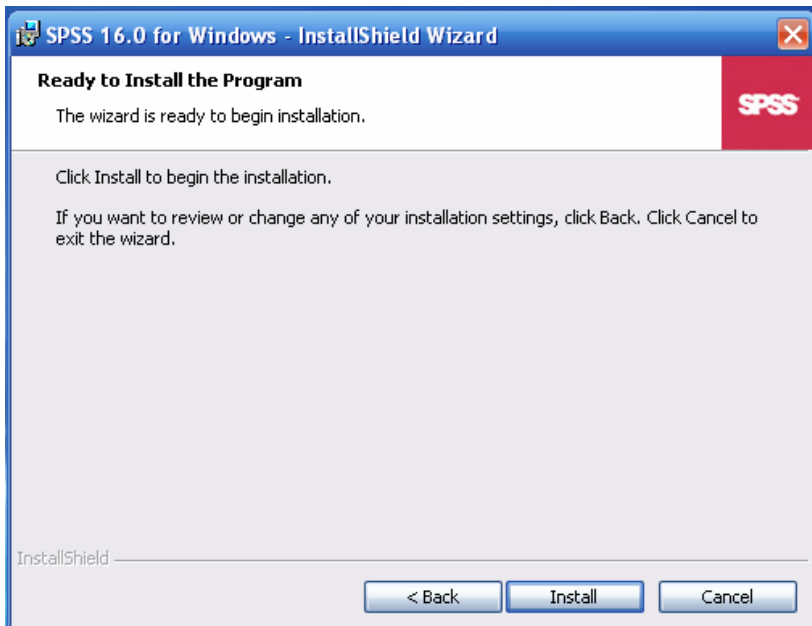
- 4) Enter the **IP name or number** of the server where the License Manager is running. **Click Set**.
Now the *Next* button will be enabled, **click Next**



5) Click **Next**> to use the default destination location folder.



6) Click **Install** to begin the installation.



- 7) The installation process will begin and files will be copied.



- 8) Once installation is over **Click *Ok*** .to complete your installation. You may visit SPSS website to register your product.

