

## SPSS 16.0 for Windows XP/Vista

### Single User Workstation Installation Instructions

#### Single User Authorization Code

#### .SPSS 16.0 Licensing Information

The Single User Authorization Code can be used to install SPSS on two computers. This allows you to install SPSS on your office and home computers. You may not install SPSS on two office computers.

In the absence of an Authorization Code, there is a 14 day trial period.

Licenses are tied to your computer with a lock code. If you replace your computer or hardware, you will need a new Authorization Code. The license is sensitive to time changes.

### SPSS Installation Instructions

Read this document found on the installation CD

- Single User License Installation Instructions

### Before You Start

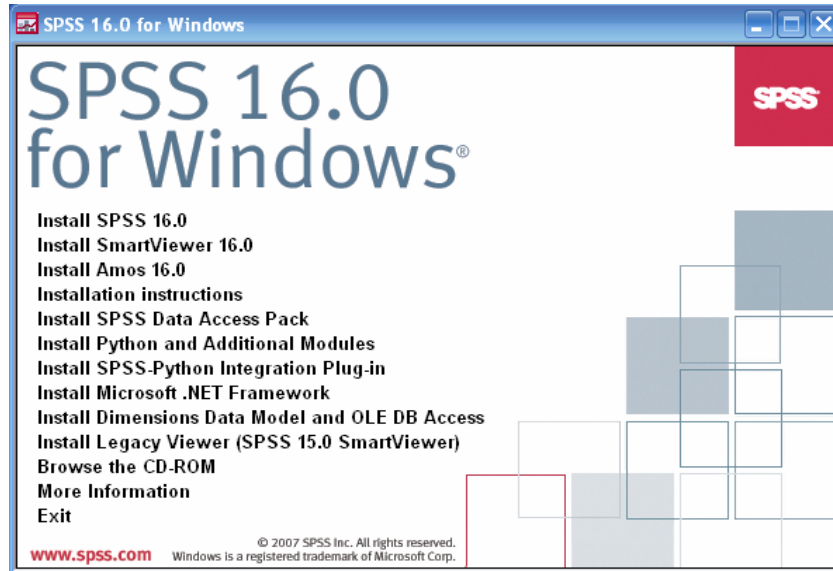
Please make sure the following is available before you start the installation process.

- 1) The SPSS CD ordered by you.
- 2) The Single User Authorization Code and Serial Number that were sent to you in email from [software@uc.edu](mailto:software@uc.edu). If you cannot find your authorization code, please contact the Software Distribution Office.
- 3) 450 MB hard drive space.
- 4) Internet connection for licensing SPSS.

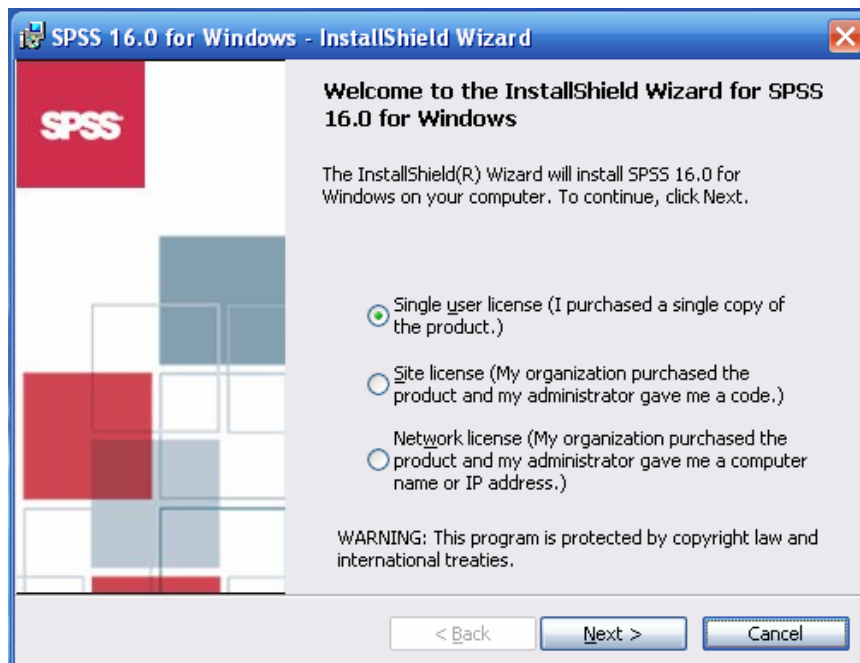
**Note:** To Install SPSS on Windows you must be logged on to your computer with administrative privileges.

## Sample Single User SPSS 16.0 Installation

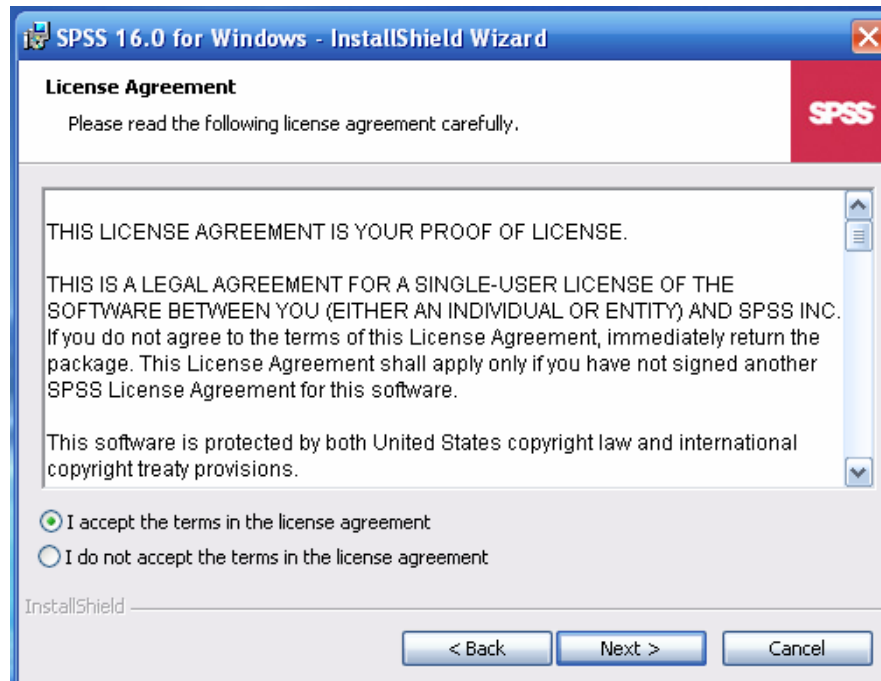
- 1) Insert the SPSS CD-ROM in to your computer.  
The auto play will display the menu. Click *Install SPSS* in the menu



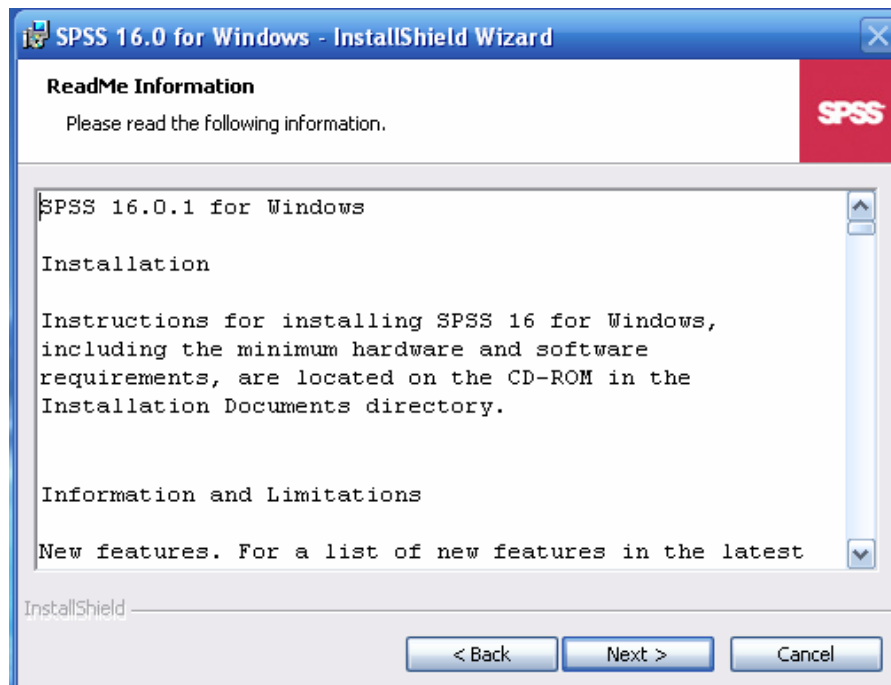
- 2) Wait till the following screen is displayed. Choose *Single-user License* in type of license and Click *Next*.



- 3) Read the license agreement, select *I accept the terms in the license agreement* and click Next.



- 4) Read the ReadMe Information and click Next.



- 5) Enter the *User Name*, *Organization* name in the first two boxes respectively. Enter the *Serial number* from the email sent to you from [software@uc.edu](mailto:software@uc.edu). Click *Next*



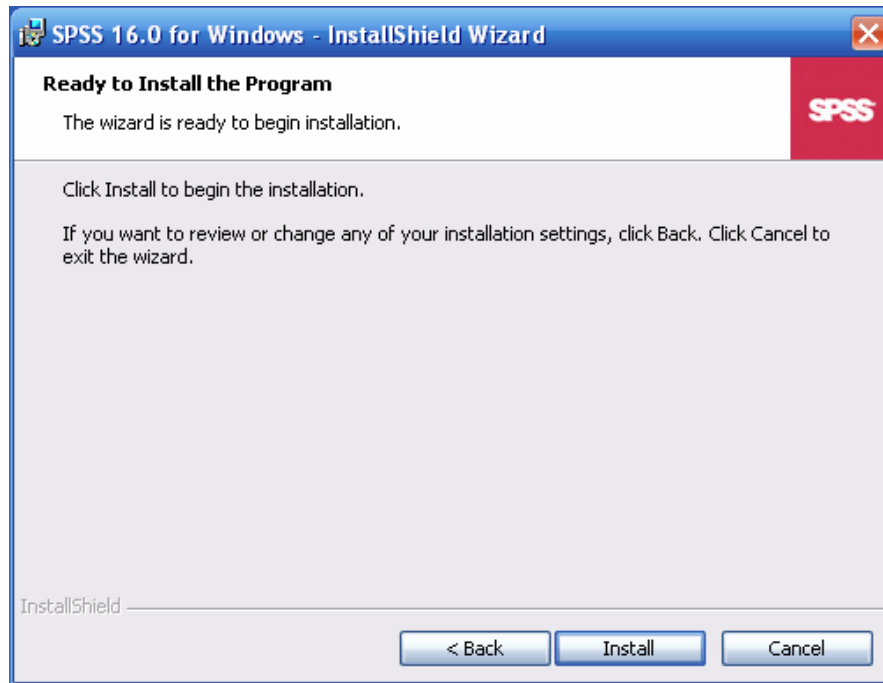
The screenshot shows the 'Customer Information' step of the SPSS 16.0 for Windows installation wizard. The window title is 'SPSS 16.0 for Windows - InstallShield Wizard'. The main heading is 'Customer Information' with a sub-instruction: 'Please enter your information.' There are three text input fields: 'User Name:', 'Organization:', and 'Serial Number:'. At the bottom, there are three buttons: '< Back', 'Next >', and 'Cancel'. The SPSS logo is visible in the top right corner.

- 6) Choose the location where you want to install SPSS. The default location will be *c:\Program files\SPSS\*. It is recommended not to change this default location. Click *Next*

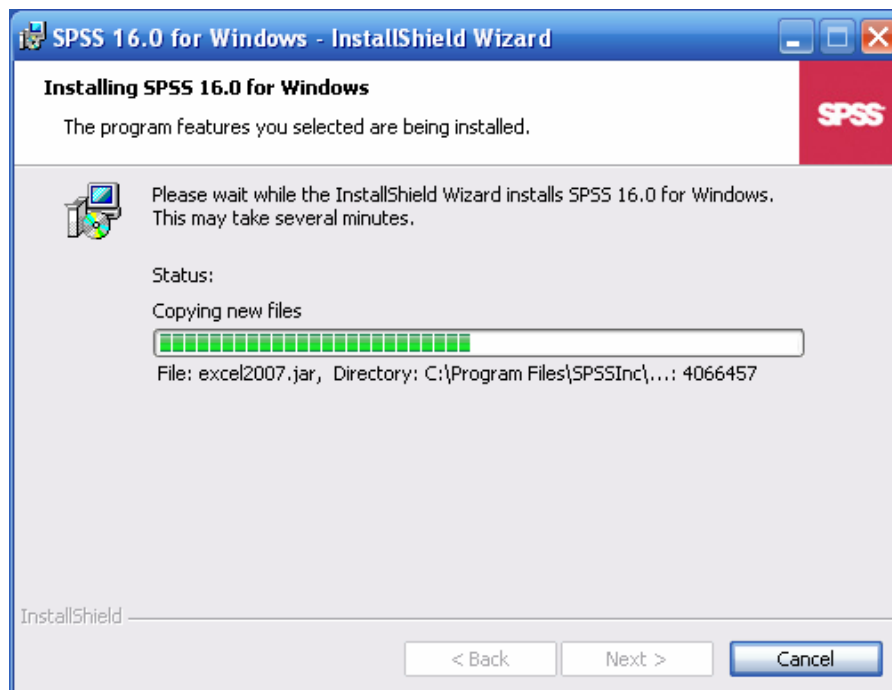


The screenshot shows the 'Destination Folder' step of the SPSS 16.0 for Windows installation wizard. The window title is 'SPSS 16.0 for Windows - InstallShield Wizard'. The main heading is 'Destination Folder' with a sub-instruction: 'Click Next to install to this folder, or click Change to install to a different folder.' A folder icon is shown next to the text: 'Install SPSS 16.0 for Windows to: C:\Program Files\SPSSInc\SPSS16\'. A 'Change...' button is located to the right of the folder path. At the bottom, there are three buttons: '< Back', 'Next >', and 'Cancel'. The SPSS logo is visible in the top right corner.

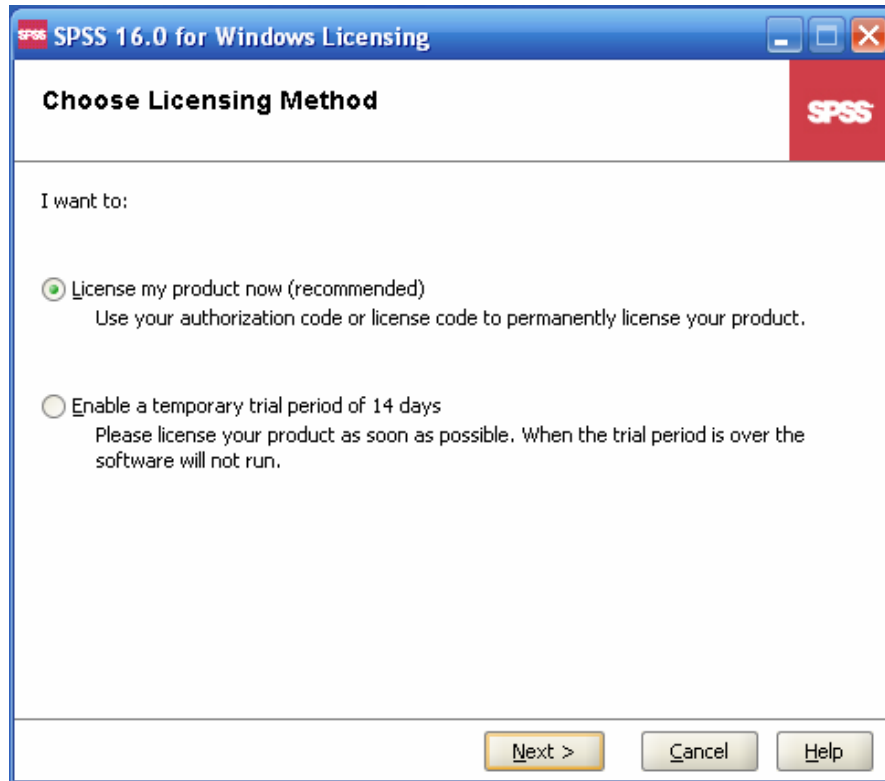
7) Click on *Install*.



8) The installation process will begin and files will be copied.



- 9) Once installation is over, select *Get a license now* and click *OK* to launch License Authorization Wizard to license SPSS. You may visit SPSS website to register your product.

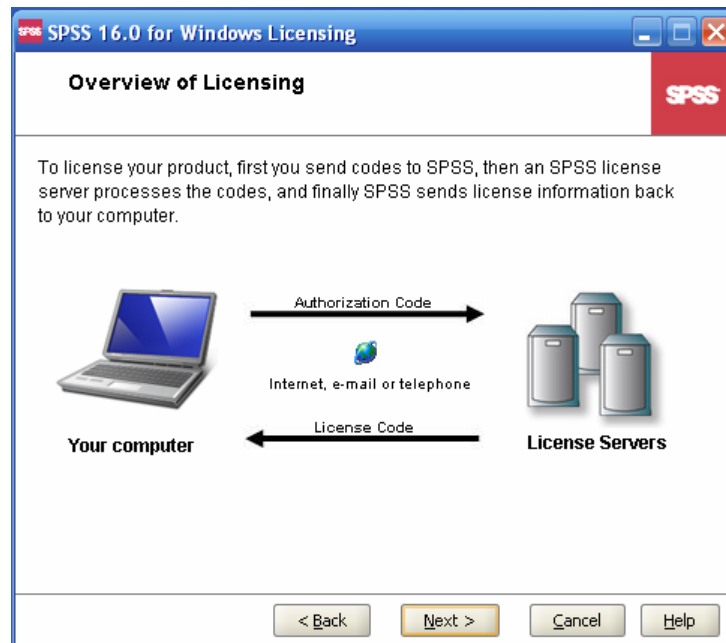


## Licensing SPSS for Windows

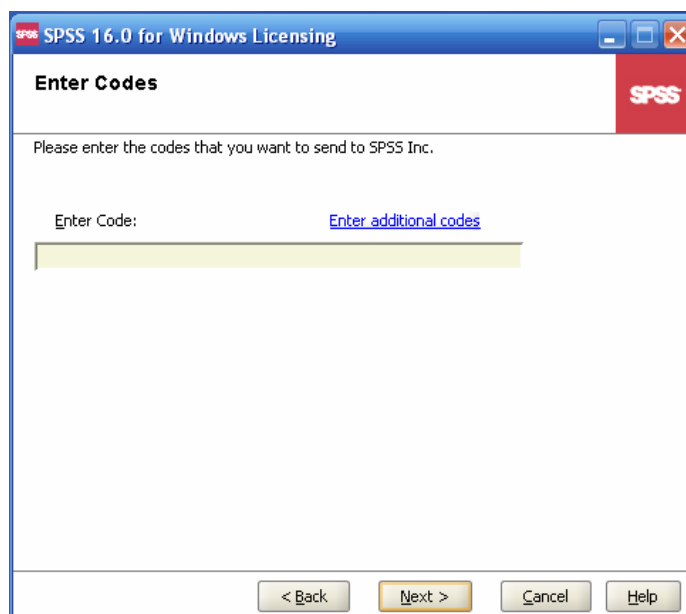
The License Authorization Wizard can be used to obtain a license for SPSS for Windows. This wizard can be launched in the last step while installing SPSS 16.0. Please note that licenses are tied to your computer's hardware with a lock code. If you replace the computer or its hardware, you will have a new lock code and will need to repeat the authorization process. The license is sensitive to time changes. If you must change the system time and then cannot run the product, contact the Software Distribution Office.

Please follow the steps to install license for SPSS.

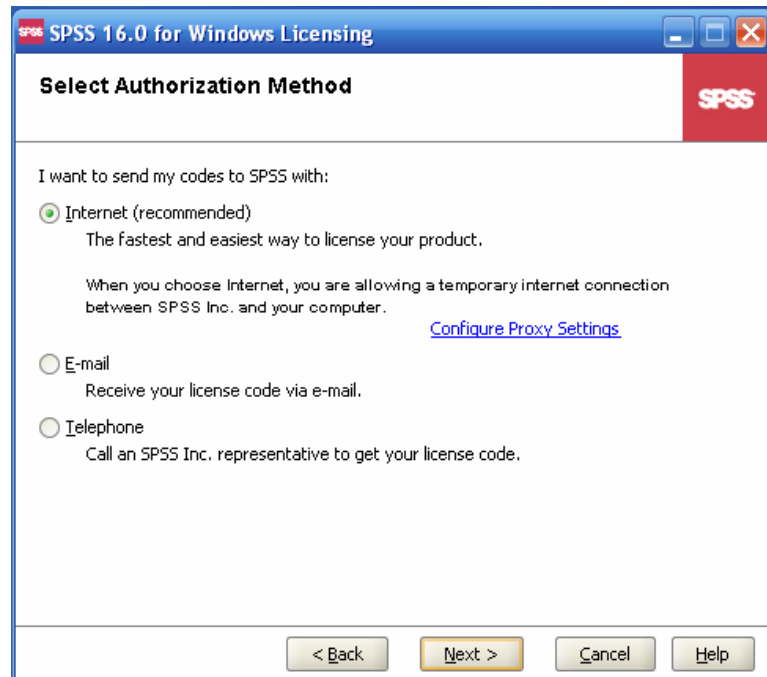
- 1) Click *Next* in the License Authorization Wizard.



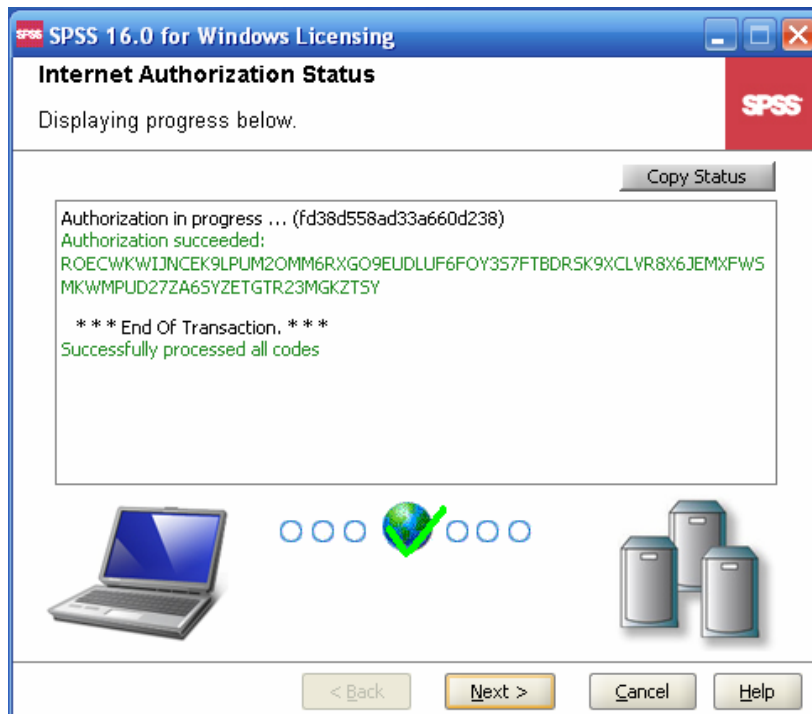
- 2) Enter the Authorization code sent to you in an email from [software@uc.edu](mailto:software@uc.edu) and Click *Next*



- 3) Choose the option *Internet (recommended)* . And click *Next*  
If you do not have an Internet connection, choose the option *Telephone* and contact SPSS at 800 - 521 – 1337.



- 4) Click *Next*.



5) Click *Finish* to complete the licensing procedure of your installation.

