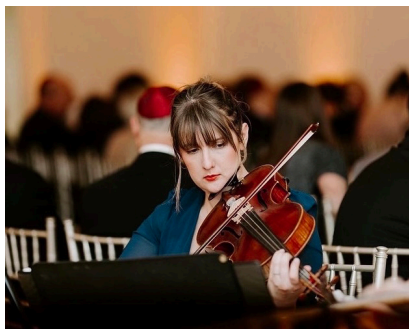


CCM

STUDENT ARTIST SERIES
PRESENTS

**SHELBY THOMPSON,
VIOLA***

**In partial fulfillment of the requirements for the degree of
Artist Diploma*



**Thursday, April 14, 2022
Robert J. Werner Recital Hall
8:30 p.m.**

PROGRAM

Suite No. 6 in G Major

Johann Sebastian Bach
(1685-1750)

- I. Prelude*
- II. Allemande*
- III. Courante*
- IV. Sarabande*
- V. Gavottes I and II*
- VI. Gigue*

Sonata for Solo Viola, Op. 31, No. 4

Paul Hindemith
(1895-1963)

- I. Äußerst lebhaft*
- II. Lied. Ruhig, mit wenig Ausdruck. Langsame Viertel*
- III. Thema mit Variationen. Schnelle Viertel (ma maestoso)*

Quartet for One

Garth Knox
(b. 1956)