

A Jungian Approach to the Tarot

**OLLI
WINTER 2022**

Donata Glassmeyer, M.A.

Moderator

dglassmeyer513@gmail.com

SOURCE MATERIALS

- **Jung and the Tarot, An Archetypal Journey by Sallie Nichols**
- **Jung: The Collected Works (various)**
- **Jung, A Very Short Introduction by Anthony Stevens**
- **Personality, Divination, and the Tarot by Carl Sargent**
- **The Book of Symbols-Reflections on Archetypal Images. Taschen. The Archive for Research in Archetypal Symbolism**
- **Tarot as a Way of Life, A Jungian Approach to the Tarot by Karen Hamaker-Zondag**
- **78 Degrees of Wisdom by Rachel Pollack**

A JUNGIAN APPROACH to the TAROT

- This class IS an overview/survey of specific cards from the Rider Waite Tarot deck as a form of divination in the Jungian tradition with emphasis on Individuation, Synchronicity, Archetypes, and the Jungian aspect of the “Self.”
- This class is NOT about fortune telling, spells or magic. We will not try to forecast anyone’s future or contact the afterlife. We will not discuss politics, physical or mental conditions, or any other personal/individual issues.
- This class IS about learning alternative pathways to your own “inner knowing” with an emphasis on Jungian perspectives.

Carl Gustav Jung (1875-1961) Swiss psychiatrist and psychoanalyst who founded analytical psychology

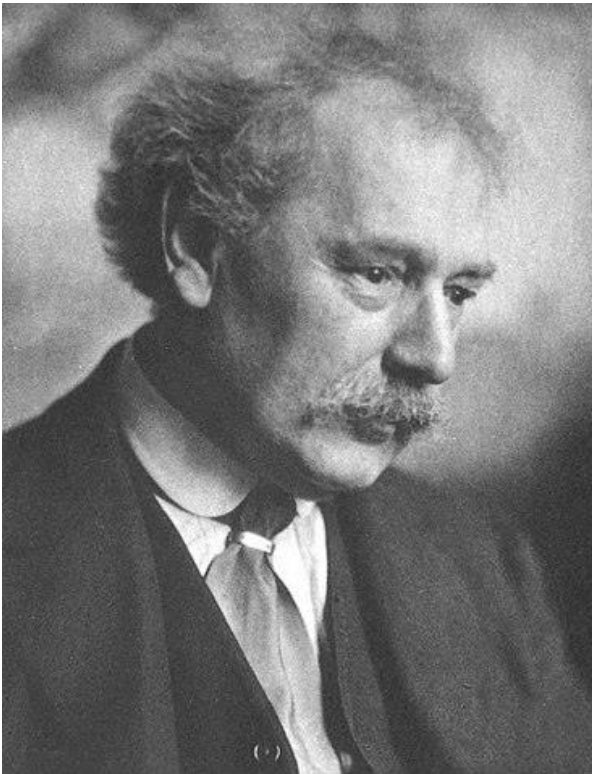


- In this class we will use the **RIDER WAITE** Tarot formulated by Arthur Edward Waite and Pamela Colman Smith (artist) published in 1920. Available on Amazon. The information in this class will be applicable across many decks. Not sure? Then just stick with the **RIDER WAITE**. It's the most accessible deck that I know for learning Jungian symbolism as applied to divination. There are 78 cards in every tarot deck. We will focus on the Major Arcana (cards 0 through 21) in this class. "Arcana" means secrets or mysteries. These Major Arcana cards deal with BIG issues/ideas/concepts. The other 56 cards are called the Minor Arcana and deal with everyday issues. The Court cards apply most often to ourselves or other people in our lives. Let's look at the Major Arcana.

A.E. WAITE & PAMELA COLMAN SMITH

Co-creators of the RIDER WAITE TAROT Published 1909.
Also known as Waite-Smith, Rider-Waite-Smith or Rider deck.

Arthur Edward Waite (1857-1942)
American born British poet and
scholarly mystic.



[This Photo](#) by Unknown Author is licensed under [CC BY-SA](#)

Pamela Colman Smith (1878-1951) British
artist, illustrator, writer, occultist. Designed
RW Tarot deck under direction of A.E.
Waite



[This Photo](#) by Unknown Author is licensed under [CC BY-NC-ND](#)



TAROT MAJOR ARCANA. CARDS 0 - 21. RIDER WAITE DECK.



TAROT: A Tool for Divination

- As a tool for divination, the Tarot cards draw upon symbols (many times called “**archetypes**” in the Jungian tradition). These symbols or archetypes serve to stimulate our subconscious mind, which tends to activate the right side of the brain summoning intuitive abilities. The Tarot is also a tool for personal story telling and personal growth, the development of the **Self**. This process is called “**Individuation**” according to Jung. **Divination** can be described as accessing information from your subconscious mind to generate intuitive knowing in your conscious mind.

Jungian terms used in this class

- **Archetype:** According to Jung, Archetypes are universal, inborn models of people, behaviors, or personalities that play a role in influencing human behavior. Jung said these archetypes were archaic forms of innate human knowledge passed down from our ancestors [and are found in most cultures and throughout human history]. Archetypes are universal patterns and images that are the contents of the collective unconscious. (CW9(1):4) That is, they belong to all of us, everywhere, no matter what our background or experience, over all time. “It is only possible to live the fullest life when we are in harmony with these [rchetypes]; wisdom is a return to them. (CW8:794).

SOME EXAMPLES OF JUNGIAN ARCHETYPES

- **The Persona – the face we present to the world.**
- **The Shadow – negative aspects of the personality we might not want to acknowledge.**
- **The Anima/Animus-Female and Male energies in each of us.**
- **The Self-The totality of the psyche. The Self is realized after going through the process of Individuation. The Self is the center of the entire personality as a whole.**

Jung suggested that the number of existing archetypes was not static or fixed. Instead many different archetypes may overlap or combine at any given time. Examples include the hero, the father, the mother, the child, the wise old man or woman, the maiden, the trickster. We will look at a variety of archetypes in the Tarot

ACTIVE IMAGINATION – A WAY TO CONNECT WITH ARCHETYPAL ENERGIES

- **Active Imagination is a conscious method of experimentation. It employs creative imagination as an organ for “perceiving outside your own mental boxes.”**
- **As developed by Jung, active imagination is a meditation technique wherein the contents of one’s unconscious are translated into images, narrative or personified as separate entities. It can serve as a bridge between the conscious “ego” and the unconscious mind. ((Wikipedia)**
- **When we “enter” a Tarot card using active imagination we often find interesting and useful information for personal development.**

Tarot suits and corresponding elements

The suits are:

WANDS - Their element is **FIRE**.
Hot. Passionate. Ready for action.

CUPS - Their element is **WATER**.
Emotions. Feelings. Embracing. Heart energy.

SWORDS - Their element is **AIR**.
Thinking. Logic. "In the head" type of energy.

PENTACLES - Their element is **EARTH**.
Practical. Work oriented. Money. Possessions. What we understand through our sense of touch.

TAROT SUITS/ELEMENTS



Astrological Symbols: The Four Elements

Page 1 of 1

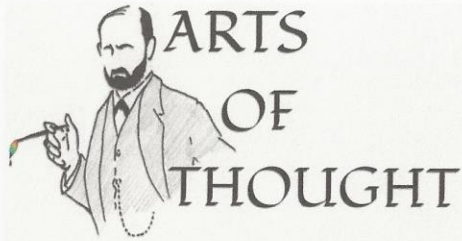
Symbols of Astrology: Elements: Fire, Earth, Air, and Water

Element	The vital forces that make up creation	Triquity
FIRE	Divided will; energy radiating out from the center; action	♃♄♅
EARTH	Physical force that holds the atoms together; practical applications; consolidation	♁♂♆
AIR	Intellect; the energy that shapes the pattern of things to come; communication	♁♃♄
WATER	Soft, feminine power of the unconscious mind; connecting to the source; reception	♁♅♆

SYNCHRONICITY

(How the Tarot works)

- **When we access the cards in the Tarot, we often find that just the right card will appear at just the right time to provide insight into a question or issue that needs clarification. Synchronicity, a term coined by Jung, happens often in our everyday lives – if we are paying attention.**



Knowledge & Wisdom worth Sharing.

Search ...

BEGIN HERE

PSYCHE & SPIRIT ▶

LOVE & INTIMACY ▶

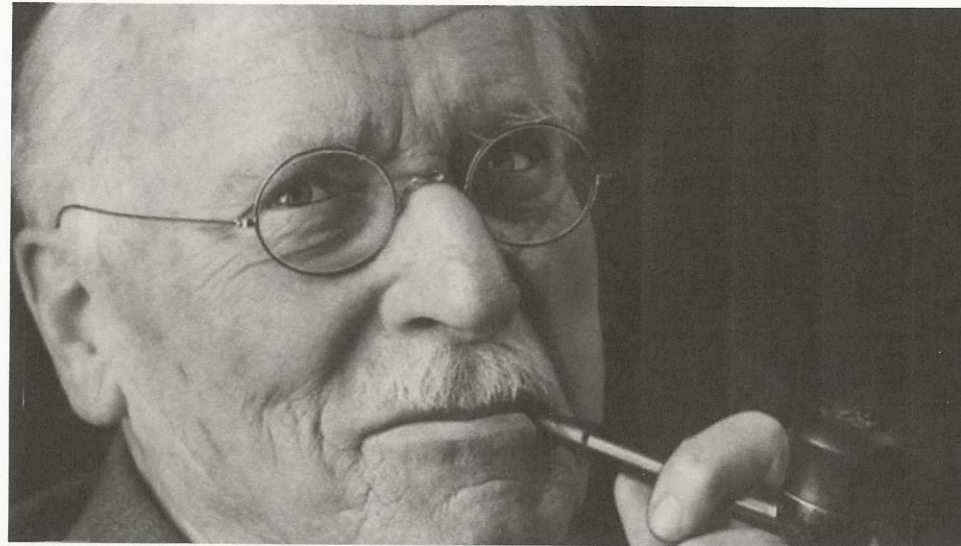
PRACTICE & SUCCESS

POETRY GALLERY

ONLINE EVENTS

CONTACT US

ABOUT



Carl Jung on Synchronicity

Clinical Application, Psyche & Spirit, Psychology / 20

Synchronicity is a word coined by Swiss Psychologist Carl Jung to describe seemingly coincidental, yet meaningful events in the external world that do not have an obvious cause.

Jung's patients' dream of the scarab beetle. An example of synchronicity.

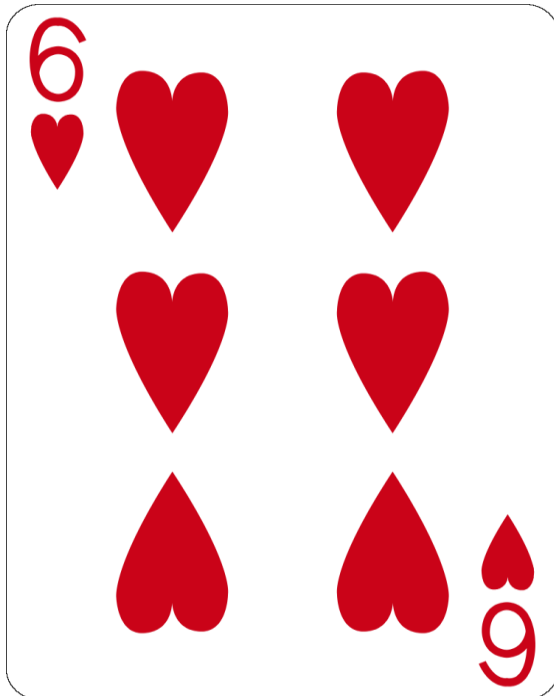


A Four of Cups reading. An example of synchronicity. (Kingdom Within deck)



Another example of synchronicity

Six of hearts – regular playing card deck



[This Photo](#) by Unknown Author is licensed under [CC BY-SA](#)

Six of cups – Rider Waite Tarot deck



[This Photo](#) by Unknown Author is licensed under [CC BY-NC-ND](#)

Donata's example of synchronicity
with doe and fawn.







[This Photo](#) by Unknown Author is licensed under [CC BY-NC-ND](#)

Card 0-The Fool

The Fool's number is zero. The fool is not gender specific. He represents infinite possibilities. The Fool is an archetype with many variations: The Innocent One; The Happy Wanderer; The hero/heroine on a quest for knowledge or adventure; the trickster. This archetype is common in cultures worldwide and across time. The Fool is on the journey toward Individuation. He may not know it at this stage, but his destination is Individuation or knowledge of the true Self. The Fool is the archetype of the unrealized Self.



[This Photo](#) by Unknown Author is licensed under [CC BY-NC-ND](#)



THE MAGICIAN.

PRINTED IN ITALY

© 1971 U.S. Games Systems, Inc.

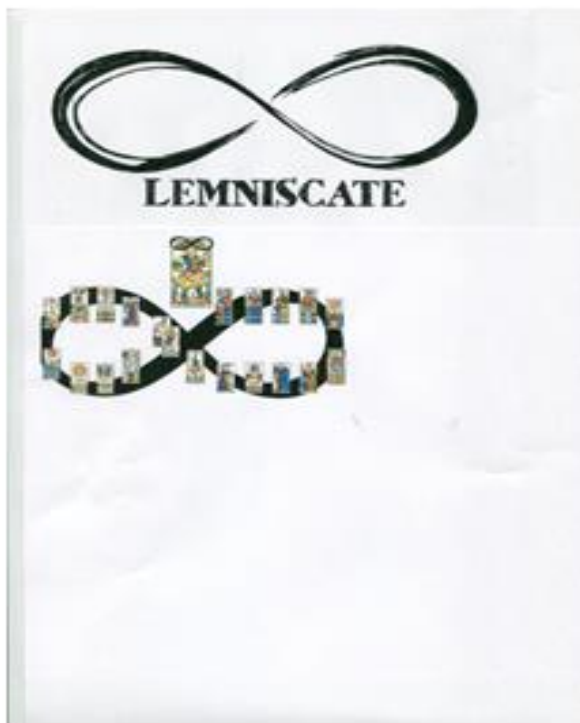
Card I– The Magician

If the Fool represents possibilities, the Magician creates from this place of possibility. He is a physical conduit for energy received through his wand from the divine/source. The four tools on the table represent the four suits/elements in the Tarot deck. He is the skilled master of creation, the archetype of the creator (not God, per se) but the creator of individual potential. Like the Fool, the Magician can be a trickster, too. “The Magician can initiate Jung’s individuation process towards wholeness, towards the Self.” (See card XXI The World) *Jung & the Tarot. Sallie Nichols*. The Magician is an example of the Persona archetype as well.



[This Photo](#) by Unknown Author is licensed under [CC BY-SA](#)

Lemniscate. Mathematical symbol for infinity. See Magician I and Strength VIII (Rider Waite)



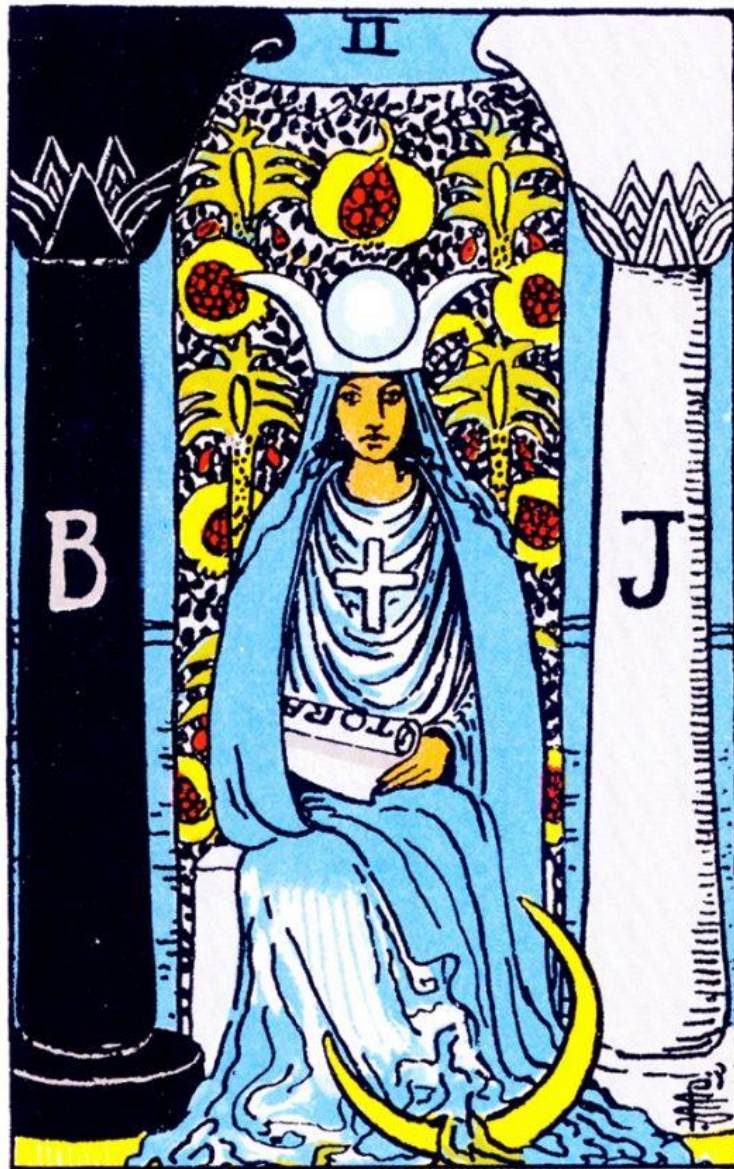
OUROBOROS- The snake consuming its tail. Constant re-creation. Eternal return.

OUROBOROS

OUROBOROS

Constant recreation, eternal return. In alchemy the ouroboros represents the circular nature of the alchemist's opus (great work).

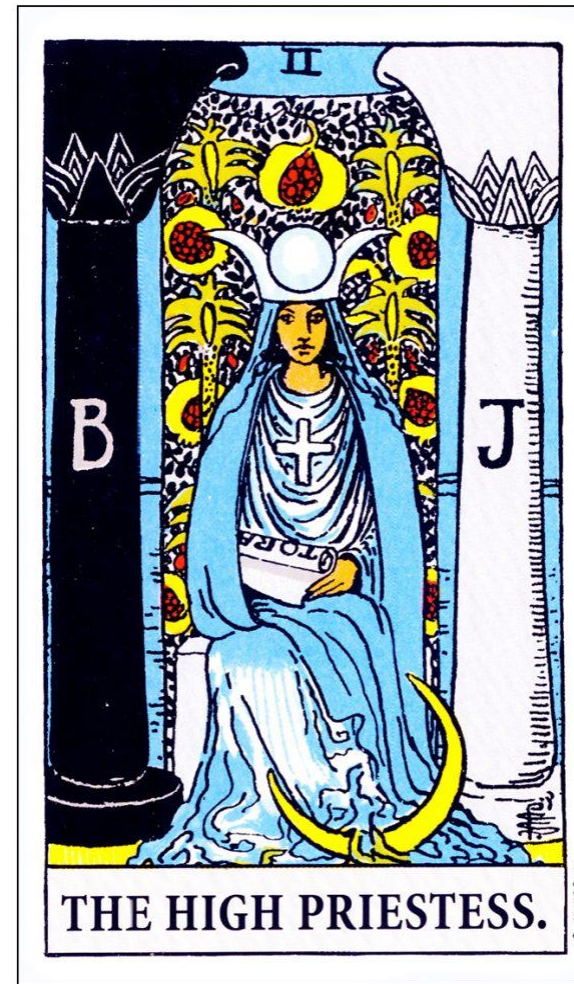




THE HIGH PRIESTESS.

Card II – The High Priestess

“The High Priestess is the enigmatic keeper of spiritual secrets. Sensitive and guarded, she knows the secrets life holds-but shares them only with the wise.” (Llewellyn.com) She is the archetype of the wise woman. Also the maiden/mother/crone as depicted in the three phases of her moon headdress. She is a spiritual guide who relies on intuition as a source of knowledge. There are a myriad of wise woman archetypes across history and known to you personally. Who do you relate to?



[This Photo](#) by Unknown Author is licensed under [CC BY-NC-ND](#)



[This Photo](#) by Unknown Author is licensed under [CC BY-NC-ND](#)

Card III – The Empress

The Empress is the archetypal Mother found across time and in all cultures. In most Tarot decks the Empress is eternally pregnant. She nurtures all of nature including children, Mother Earth, pets, our personal environments – she protects all creation. This card represents sensuality and the embodiment of all that is feminine. Sometimes the antithesis of the Good Mother surfaces in its opposite: Disney’s archetypal stepmothers and queens, for instance. They are Shadow archetypes.



[This Photo](#) by Unknown Author is licensed under [CC BY-NC-ND](#)

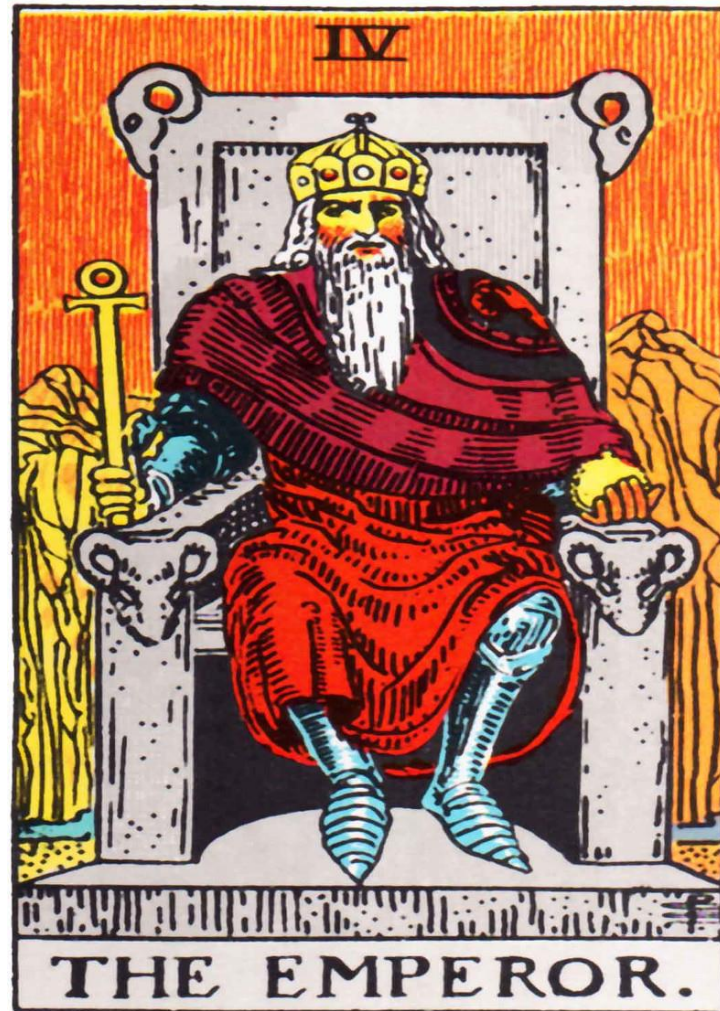
IV



THE EMPEROR.

Card IV – The Emperor

“The Emperor is the authoritative protector and provider who rules the known world. An archetypal father figure, he brings order out of chaos so that civilization can prosper.” (www.llewellyn.com). The Emperor is also an archetype of the Wise Old Man. He stands for order and practicality. He is also a powerful animus figure, an embodiment of the rule of law and logic. The Emperor’s Shadow side becomes the tyrant, the bully, the feared father. The Emperor is not usually in contact with the creativity of the unconscious. (Personality, Divination & the Tarot)



[This Photo](#) by Unknown Author is licensed under [CC BY-NC-ND](#)

Comparison of Empress III and Emperor IV. Anima and Animus.

The Empress is chiefly concerned with feeling.

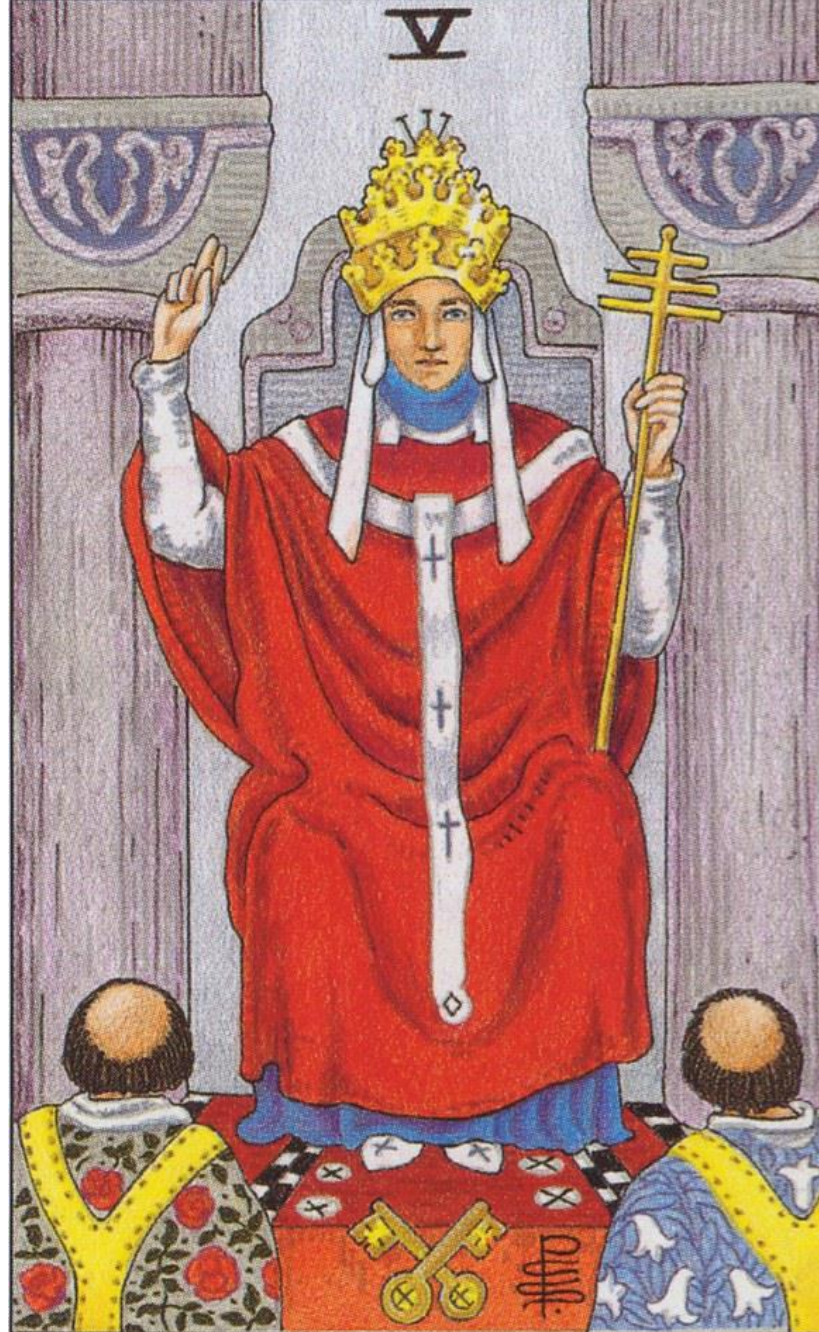


[This Photo](#) by Unknown Author is licensed under [CC BY-SA-NC](#)

The Emperor is chiefly concerned with thinking.



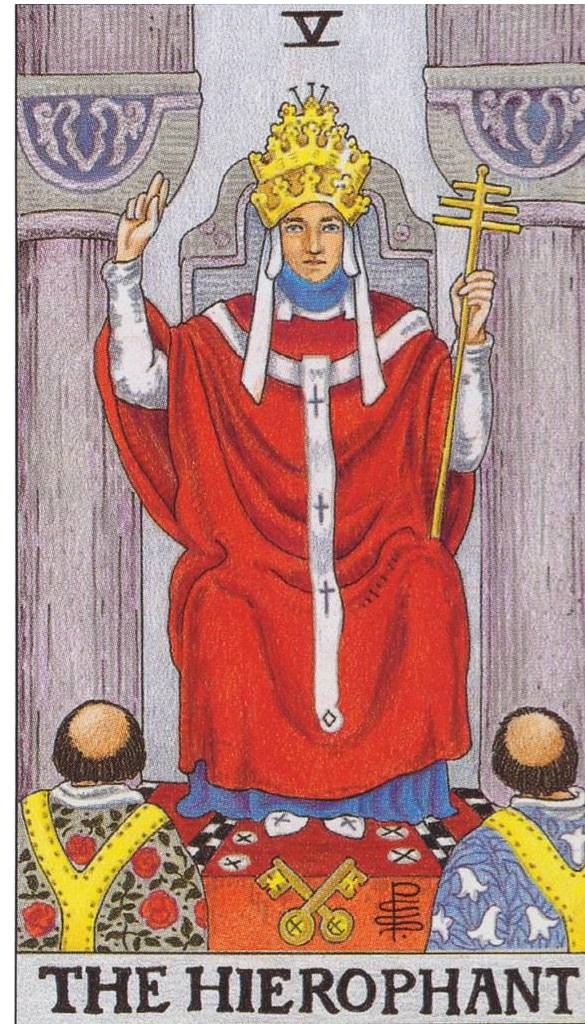
[This Photo](#) by Unknown Author is licensed under [CC BY-SA-NC](#)



THE HIEROPHANT

Card V The Hierophant

The Hierophant represents traditional authority and influence. He exemplifies the Persona or face of Society. He instills cultural and religious traditions to followers. This card is symbolic of initiations of all kinds, not just religious. Our Fool, when he comes across card V, discovers identification with a group. Our Fool finds a sense of belonging when immersed in Hierophant energies. The Fool begins to conform (or not). “Jung viewed man’s urge toward [finding] meaning as an instinct in the human psyche, a creative force The Hierophant/Pope is an example of the Savior archetype as well. He interprets spiritual law. This card may reflect the Animus archetype within a woman.

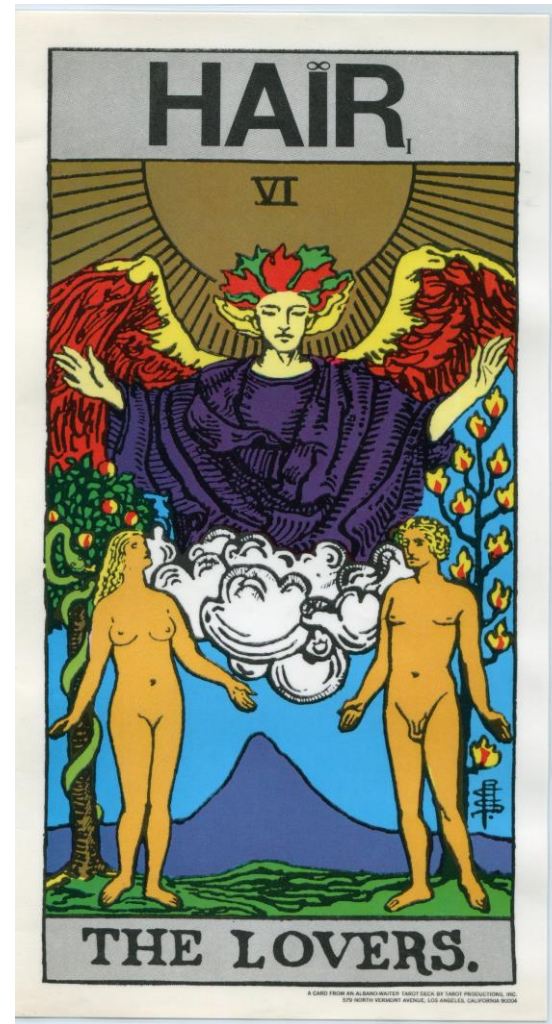


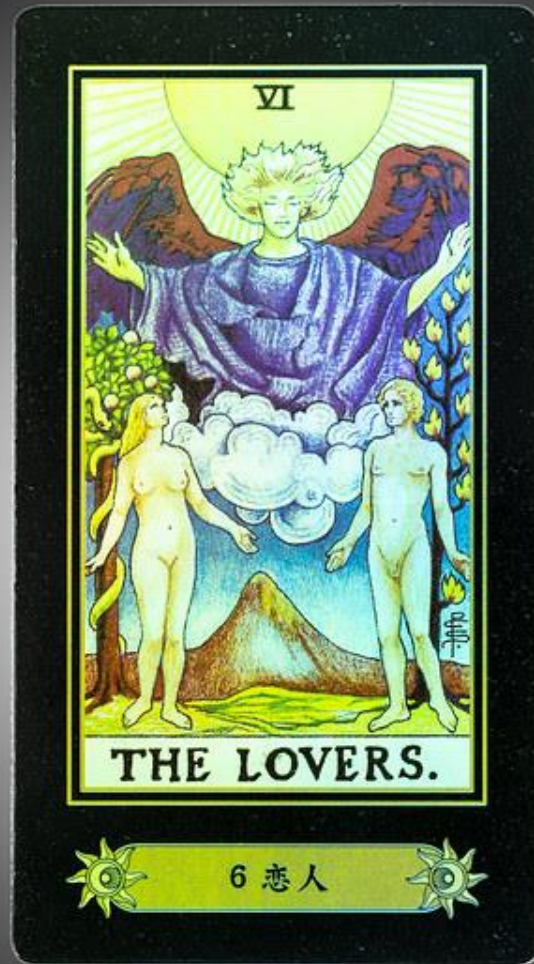
[This Photo](#) by Unknown Author is licensed under [CC BY-SA-NC](#)

**Carl Jung, in his study of the Persona archetype said that it would be dangerous if people became identical to their Personas. However, one of the goals of the process of Individuation was the development of a realistic, flexible persona that will help an individual during his interactions with society, but won't clash with his true self. Thus the Persona will become a true representation of that individual's inner individuality and his outward sense of self."
(www.taroticallyspeaking.com)**

VI THE
LOVERS

PLAYBILL
FROM
THE
MUSICAL
“HAIR”





VI The Lovers card from The Marseilles Tarot-Circa 16th century France

The Lovers Card is telling us (The Fool on his journey towards individuation) to make a choice. “Cupid is the angelic creature concerned with fate and destiny. . .The card speaks to both men and women, and its developmental message is that we must detach ourselves from our parents in order to become independent people...Detach and grow up we must.” (Carl Sargent). What other choices does this card imply? How is this card different from the Rider-Waite version?



The Lovers Card VI Jean Noblet Tarot 1650.



[This Photo](#) by [Wikimedia Commons](#) is licensed under [CC BY-SA](#)

Figure 25. A rendering of the Lovers card from the Jean Noblet Tarot, one of the earliest in the Marseilles tradition, printed in Paris, circa 1650

Card VI – The Lovers

What choices does this version of the Lovers imply? Remember our path towards the Self and Individuation.



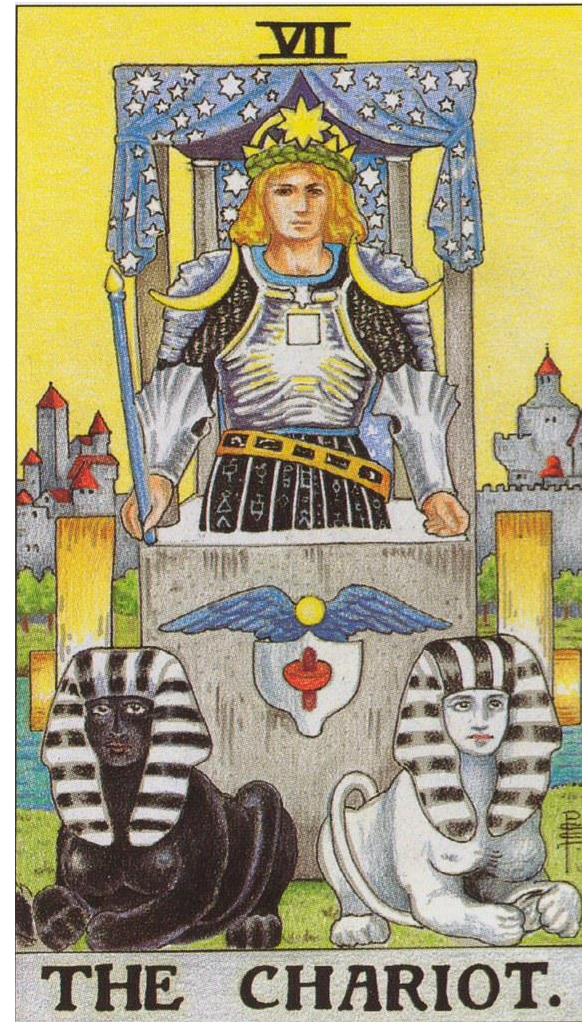
VII



THE CHARIOT.

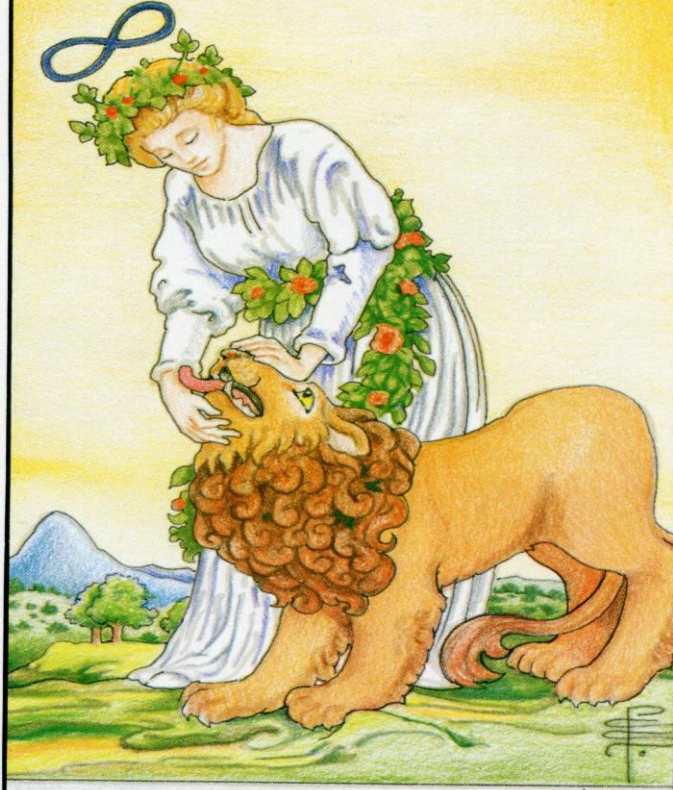
Card VII – The Chariot

Does this card imply movement? What's problematic with this card?"
The Charioteer, or our ego, who must dare to take the reins, who must realize what is tugging at him inside....He must attend to the development of a strong ego, while battling unconscious drives and impulses which can [hinder] healthy ego development....The Charioteer must use insight and will power to control unconscious impulses."
(Hamaker-Zondag)



[This Photo](#) by Unknown Author is licensed under [CC BY-SA-NC](#)

VIII



STRENGTH.

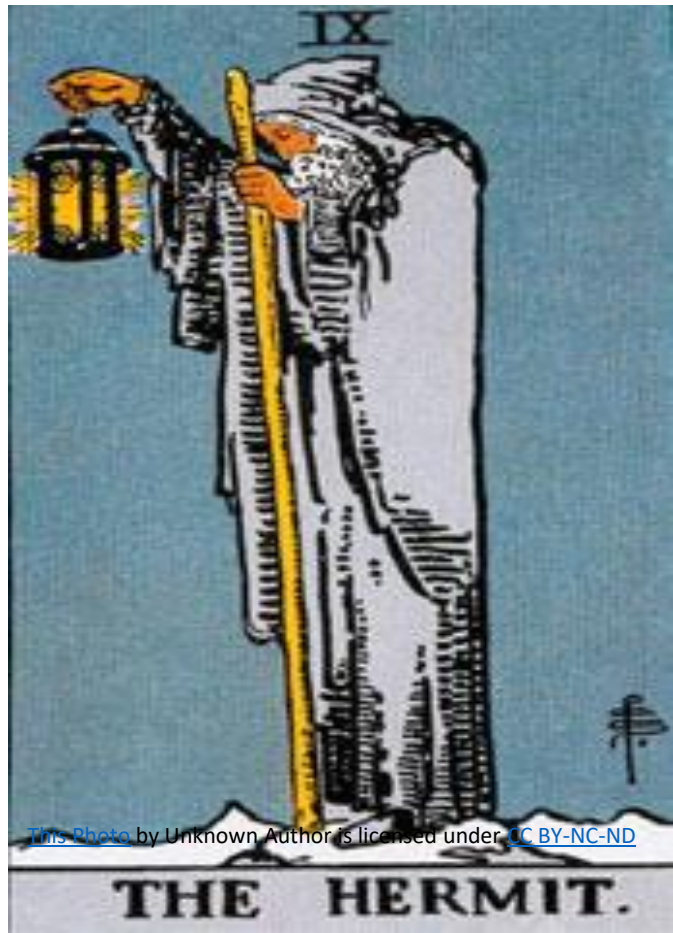
© 1990 U.S. Games Systems, Inc.

Card VIII - Strength

Transitioning from the Chariot energies, the Fool meets Strength, where he discovers the quiet attributes of patience and tolerance. “[The Fool] realizes that the willful command of the Chariot must be tempered by kindness and the softer power of a loving approach. In this card we are asked to OPEN ourselves to listening to the instincts and images coming from the unconscious. We are then able to make conscious choices to “tame” our urge to act out inappropriately.



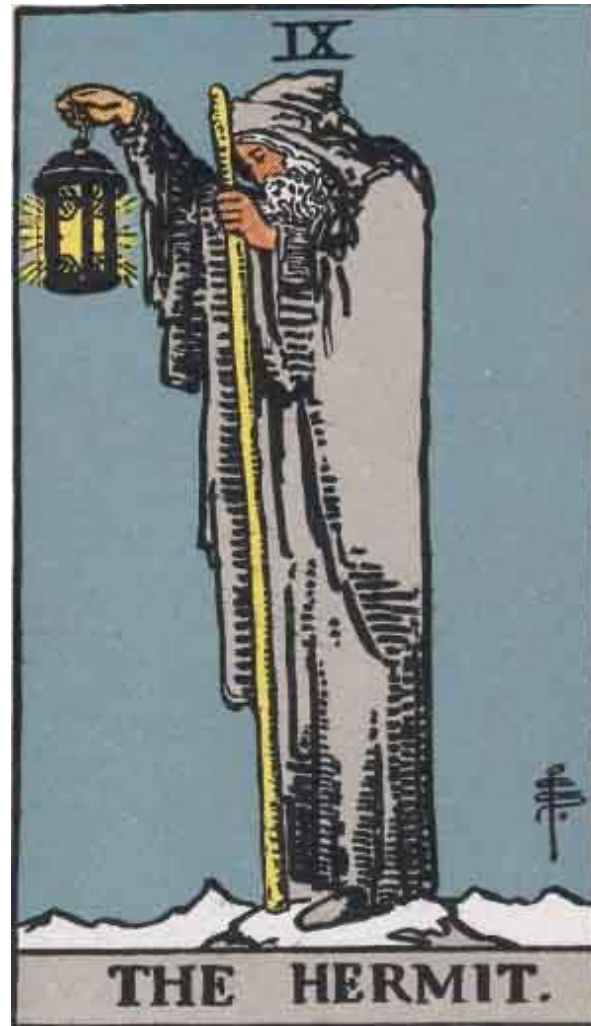
[This Photo](#) by Unknown Author is licensed under [CC BY-SA](#)



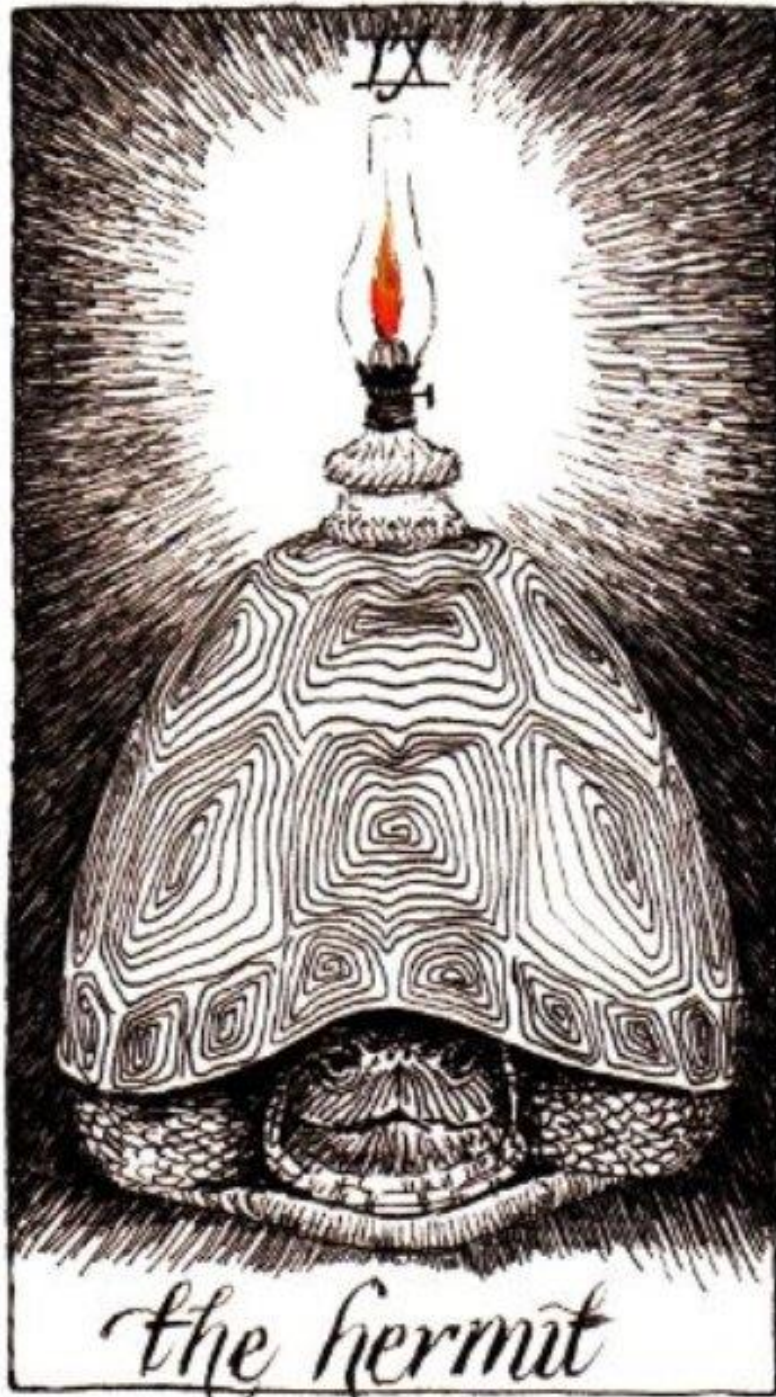
This Photo by Unknown Author is licensed under [CC BY-NC-ND](https://creativecommons.org/licenses/by-nc-nd/4.0/)

Card IX – The Hermit

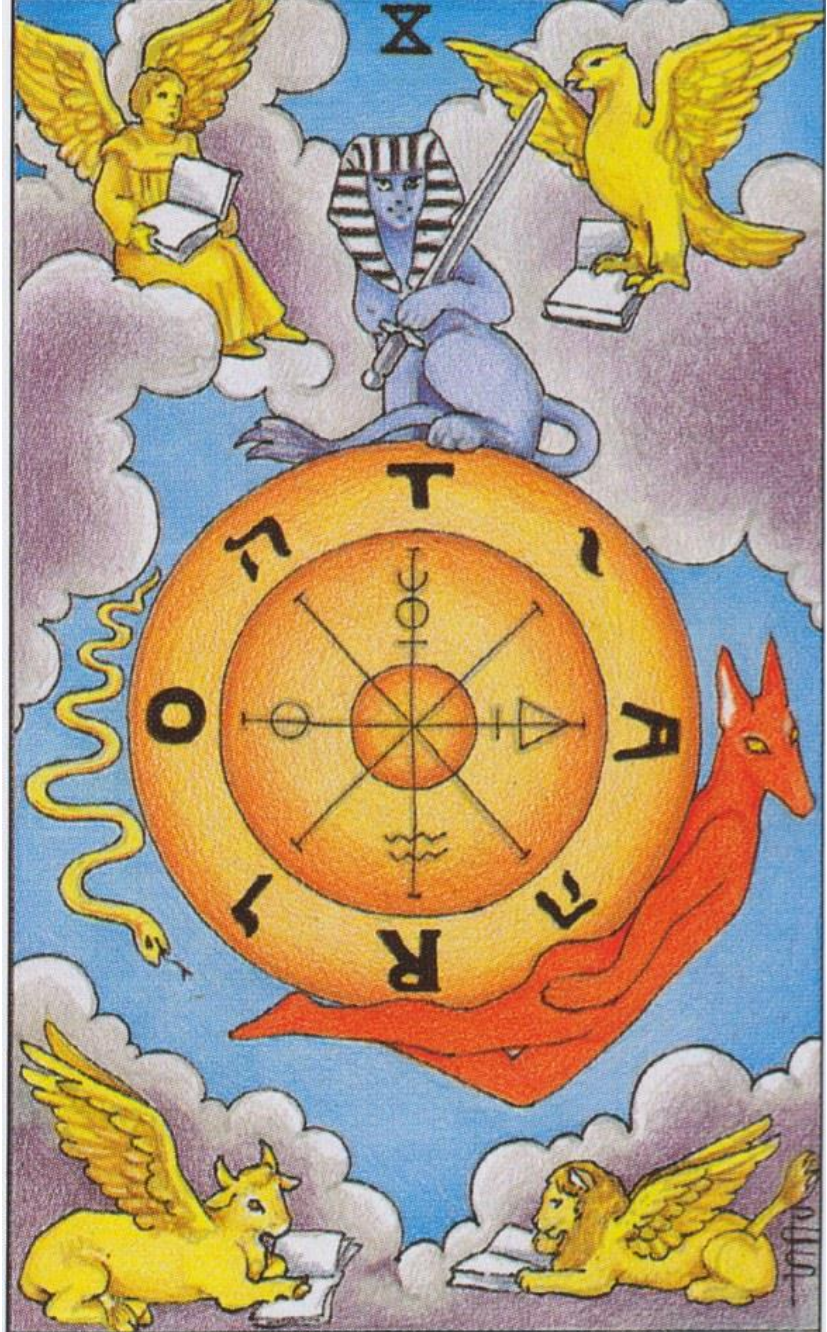
The Hermit is on a “personal search for universal values and laws [that are unconnected] to external rituals or any dogmatic approach.” (Hamaker-Zondag). He is the archetypal wise old man/woman. The Hermit’s journey is totally personal. However, after spending time with the energies represented in this card, we may find we have some value to offer others. The lantern might signify ,, ,?



[This Photo](#) by Unknown Author is licensed under [CC BY-SA](#)



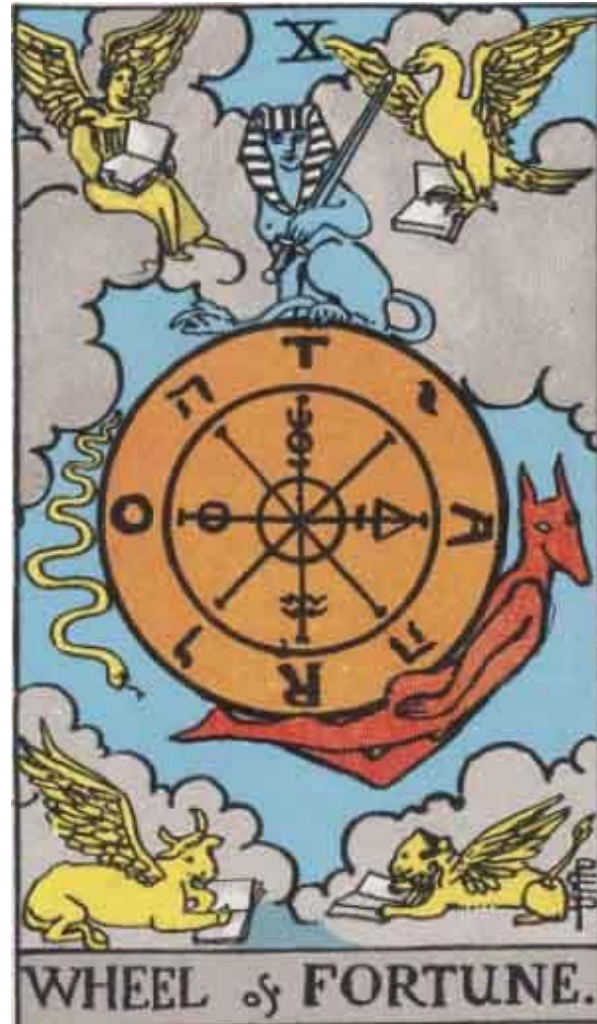
© The Society of Women, 1915



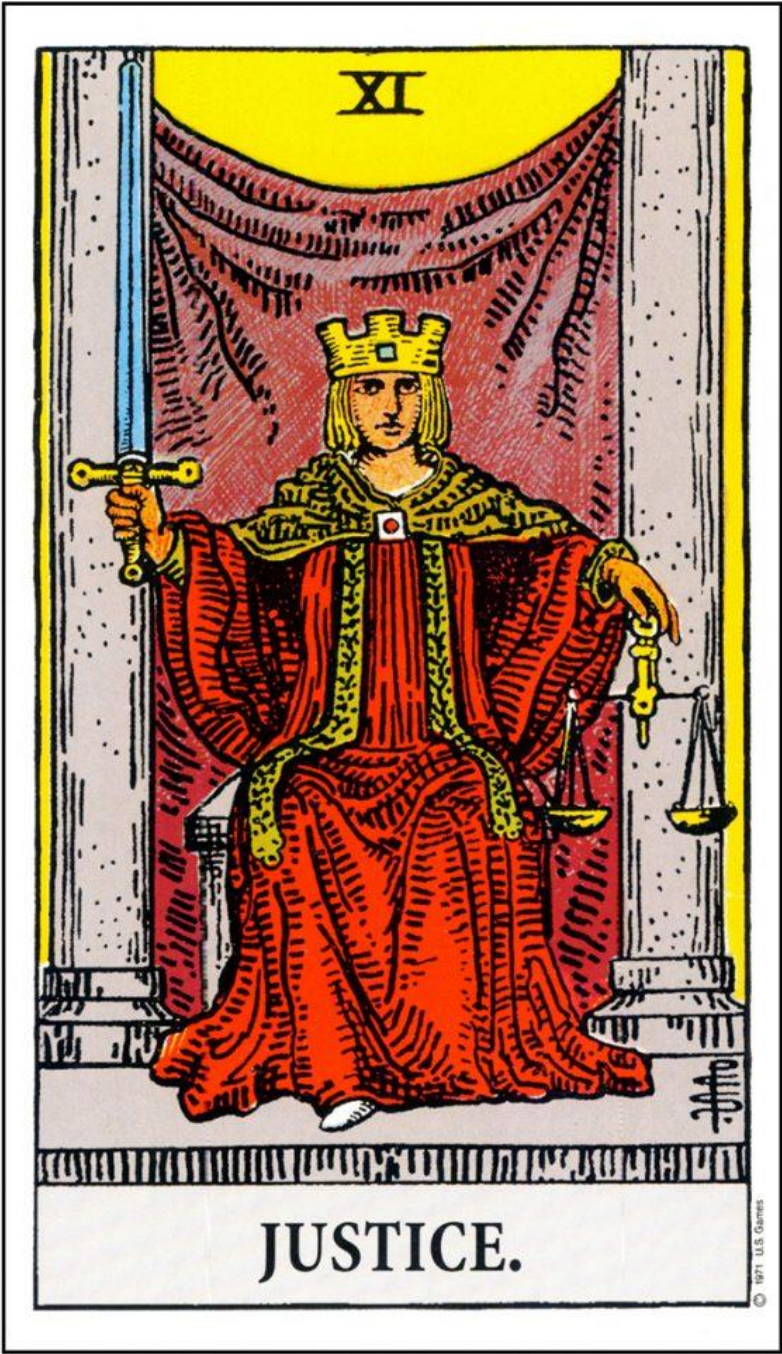
WHEEL of FORTUNE.

Card X – Wheel of Fortune

With his sense of order restored during his visit with the Hermit, our Fool/sojourner, is ready for movement and action once again...He may see himself within the grander scheme of a universal plan. Fate and destiny are of consideration at this time. "If we can understand how we, ourselves are involved in the processes and situations in which we find ourselves, we shall be able to change them." (Hamaker-Zondag). We can get off the Wheel instead of asking, "Why is this %&*t always happening to me?" Our Hero's task [as with all human beings seeking consciousness/individuation] is to liberate animal energies caught in the repetitive instinctual round." (Nichols)



[This Photo](#) by Unknown Author is licensed under [CC BY-SA](#)



Card XI - Justice

On his journey toward Individuation, to find his true Self, the Fool must take responsibility for his past actions so he can make amends and ensure a more honest course for the for the future. The demands of Justice must be served so that he can wipe the slate clean.

“EQUALIBRIUM IS THE BASIS OF THE GREAT WORK”

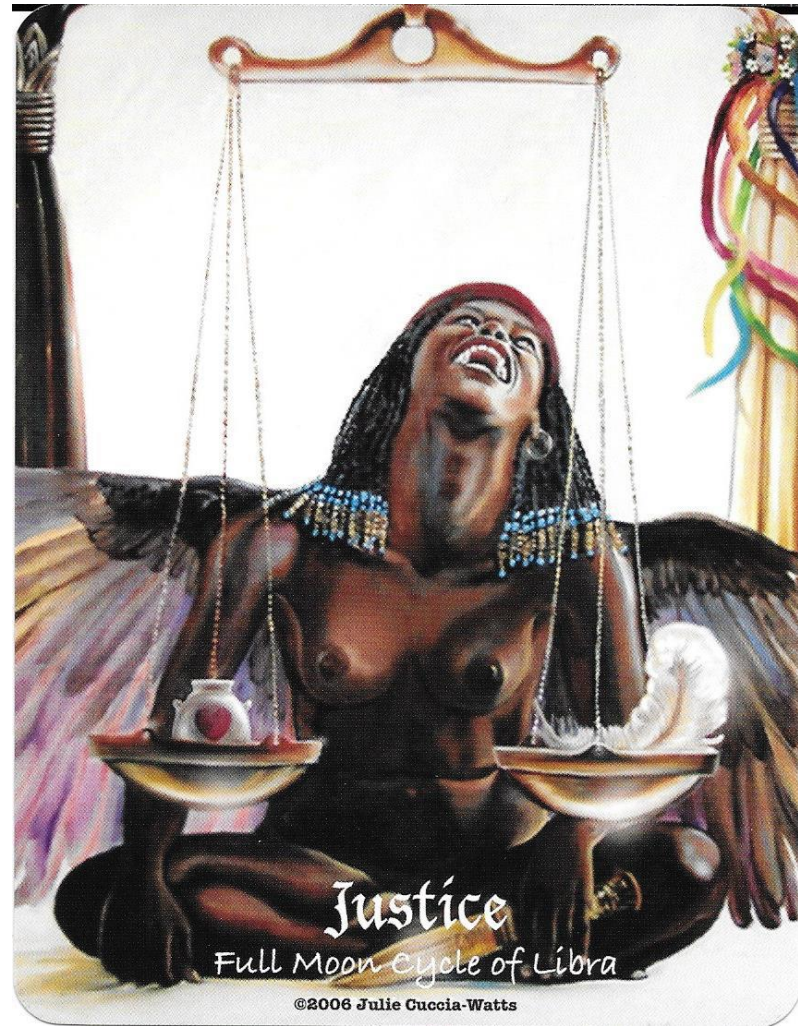
Alchemical saying.



[This Photo](#) by Unknown Author is licensed under [CC BY-SA](#)

Justice XI – The MAAT Tarot by Julia Cuccia-Watts

The Egyptian goddess, Maat, is the goddess of harmony, justice and truth. She weighs the souls of the dead on their way to the Underworld. Her ostrich feather was the measure that determined whether the souls (considered to reside in the heart) of the departed would reach the paradise of afterlife successfully. If the heart was found to be lighter or equal in weight to the feather of Maat, the deceased had led a virtuous life and would go on to enjoy the afterlife.





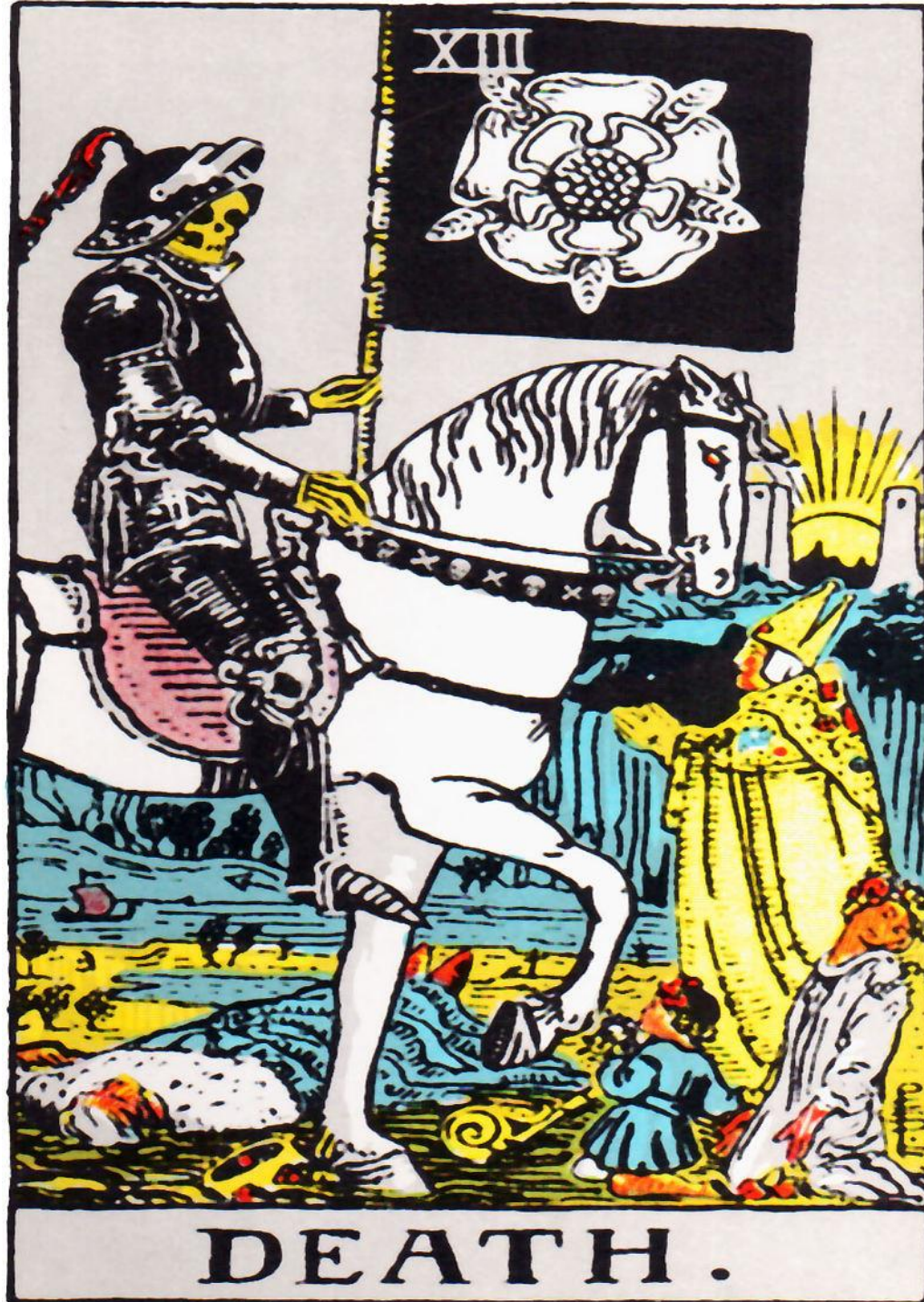
[This Photo](#) by Unknown Author is licensed under [CC BY](#)

XII – The Hanged Man

On his journey the Fool may feel defeated and lost when he experiences The Hanged Man XII. “He believes he has sacrificed everything, but from the depths he learns an amazing truth. He finds that when he relinquishes his struggle for control, everything begins to work as it should. By becoming open and vulnerable, the Fool discovers the miraculous support of his inner Self. He learns to surrender to his experiences rather than trying to fight them. He feels surprising joy and begins to flow with life.” (Joan Bunning)



[This Photo](#) by Unknown Author is licensed under [CC BY-SA](#)



DEATH.

XIII - Death

Journeying on through the Tarot, the Fool meets the archetypal image of Death. “The Fool now begins to eliminate old habits and tired approaches. He cuts out nonessentials because he appreciates the basics of life. He goes through endings as he puts the outgrown aspects of his life behind him. His process may seem like dying because it is the death of his old familiar self allowing for the growth of a new one [the true Self]...He discovers that death is not a permanent state. It is simply a **TRANSITION** to a new, more fulfilling way of life.”



[This Photo](#) by Unknown Author is licensed under [CC BY-SA](#)



[This Photo](#) by Unknown Author is licensed under [CC BY-NC-ND](#)

Temperance Card

XIV - Temperance

Wow! After Death XIII and before the Devil XV card, our Fool gets a bit of reprieve with Temperance VIX. Angels in some circumstances represent messengers. The Temperance angel gives us a feeling of peace; we can relax. The positive aspect of this card gives us balance and the wherewithal to explore deeper and perhaps more troublesome instincts upcoming. (Remember, we are on a journey toward wholeness). “She shows us how good it really is to tackle all kinds of situations in a peaceful way, instead of being emotional and aggressive.”(Hamaker-Zondag) Look at the dot on her forehead; her third eye, “traditionally the area of supreme consciousness and in Jungian terms the spot of individuation.(Nichols) But not ALL angels are benign...

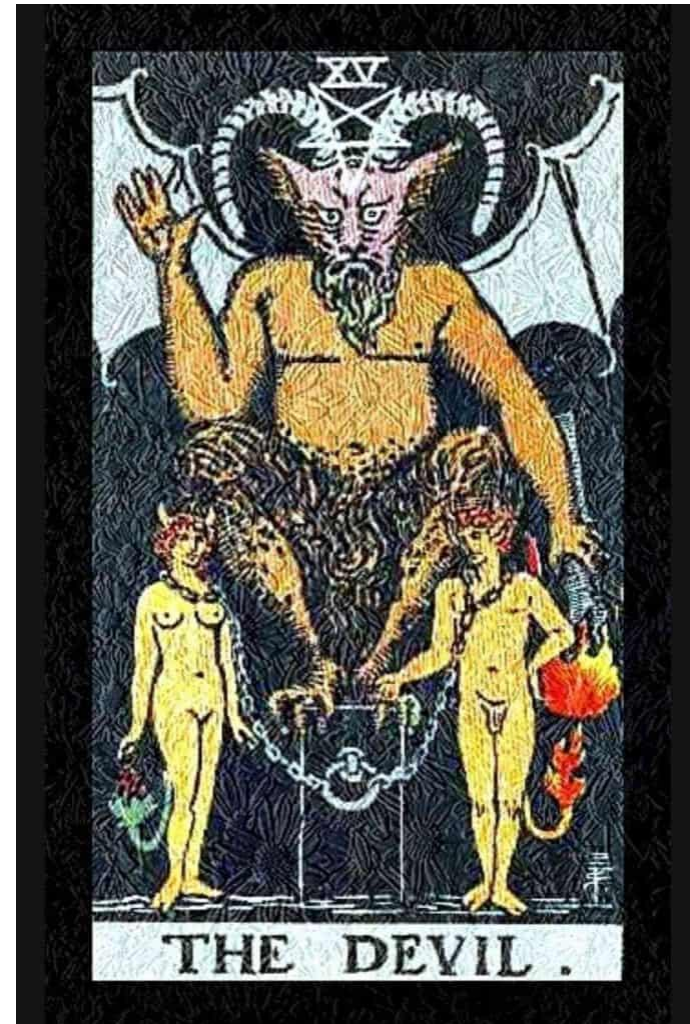


[This Photo](#) by Unknown Author is licensed under [CC BY-NC-ND](#)



XV – The Devil

In the song *Sympathy for the Devil*, Mick Jagger sings, “Pleased to meet you – hope you guessed my name.” The subject of this song has been around for a “long, long time.” The Tarot Devil is the fallen angel, Lucifer. He holds in thrall two individuals. (Where have we seen them before?) This Devil is not an evil, sinister figure residing outside of us. He is the dark **archetypal** SHADOW energy lodged within each of us. On our path to Individuation we are asked to recognize our attachments, our slavish attention to the material world in an effort to free ourselves from such bondage so we may progress. Sooner or later we are going to stand face to face with the less ethical sides of our ourselves. (Nichols) It’s our job to integrate these energies; recognize them. Often we project our Shadow on the outside world, refusing to own our faults. Shadow energy can also be an aspect of Society.



SHADOW ENERGY IN CONTEMPORARY CULTURE

Murray Stein, Ph.D. is a Jungian Analyst and Training/Supervising Analyst at the International School of Analytical Psychology, Zurich. Stein and his collaborators are “deeply indebted to BTS [a South Korean K-Pop musical group]. BTS’ world wide popularity points to their remarkable ability to tap into [Jungian] universal themes that dwell in the collective domain,” writes Stein. BTS’ music inspired Dr. Stein to write two books focusing on BTS music and Jungian concepts: *Map of the Soul: 7*; and *Persona, Shadow and Ego in the World of BTS*. (Chiron Publications)

The following music video *Pied Piper* (Love Yourself-Her album) features BTS reflecting on their enormous influence on more than forty million worldwide fans (called ARMY). *Pied Piper* reminds fans that over attachment to the band may take its toll on their school work, their jobs, their relationships. Shadow energy is overwhelming seductive in this song. Lyrics are mostly in Korean, but you’ll get the gist and you can Google English lyrics.

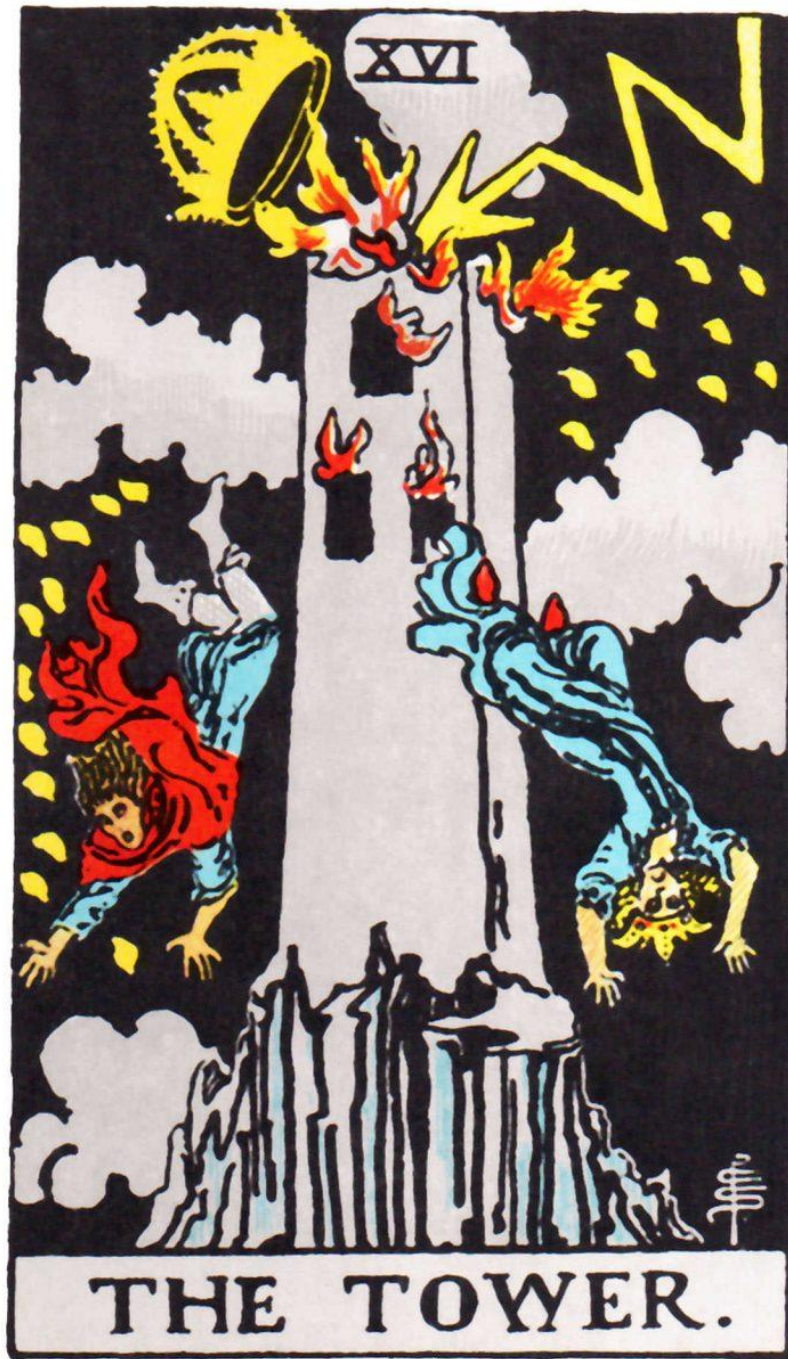


This Photo by Unknown Author is licensed under [CC BY-NC-ND](https://creativecommons.org/licenses/by-nc-nd/4.0/)

Sorry, I could not embed the YouTube video here. Something to do with copyright issues. So, if you would like to view the music video PIED PIPER by BTS, just visit YouTube and search BTS PIED PIPER with English lyrics subtitled. You'll be glad you did and you'll learn more about Tarot card XV The Devil with a Jungian Shadow emphasis.

THE SHADOW IS THE COMPLETE OPPOSITE OF THE 'POSITIVE' AND ACCEPTABLE' ASPECTS OF THE INDIVIDUAL'S PERSONALITY. Thus in a Tarot reading, reversed cards can also often depict this shadow aspect of a situation depicted in the picture. (Reversed cards are the subject of much debate and beyond the scope of this class.)

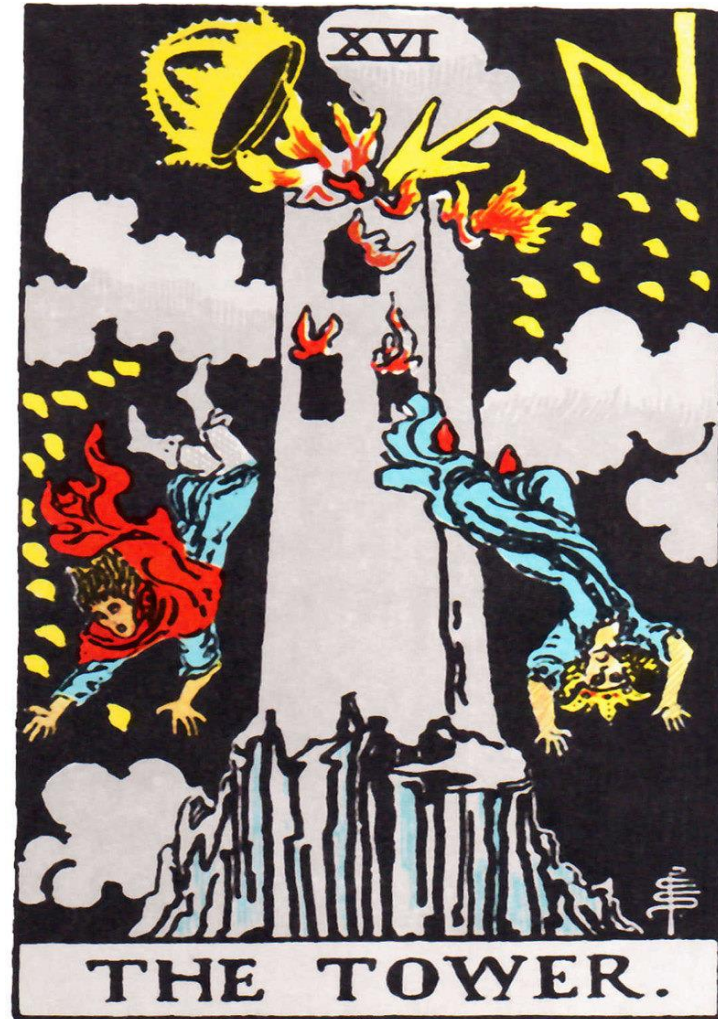




THE TOWER.

XVI – The Tower

How can the Fool free himself from the energies of the Devil (card XV)? Sometimes only a sudden change will do the trick. We are often surprised and unprepared for this shift. The Tower is the ego fortress each of us has built around our inner core. When that ego is shaken to its core, we may be humbled enough to recognize the freedom such a shock ultimately offers. “In a positive sense the Tower finally provides the opportunity for those breakthroughs you have secretly had in mind for a long time, but have not been able to make. . . The Tower can make life sparkle again as soon as you burst the bubble of illusion.” (Nichols). The Tower card is a symbol/archetype of the Shadow overthrown.



[This Photo](#) by Unknown Author is licensed under [CC BY-NC-ND](#)



XVII – The Star

After the discord of the Tower the Fool now enjoys a sense of reprieve when he meets The Star XVII. Now the Fool is able to pull himself together with a renewal of hope and confidence in the future. "By knowing that life opens doors only when we try as much as we can to develop our own potential creativity, we find in the optimum case that the things we start often take a positive direction and even lead to success." (Nichols) The peace after the storm of the Tower is a magical moment for the Fool. The Star Woman is a helping guide.

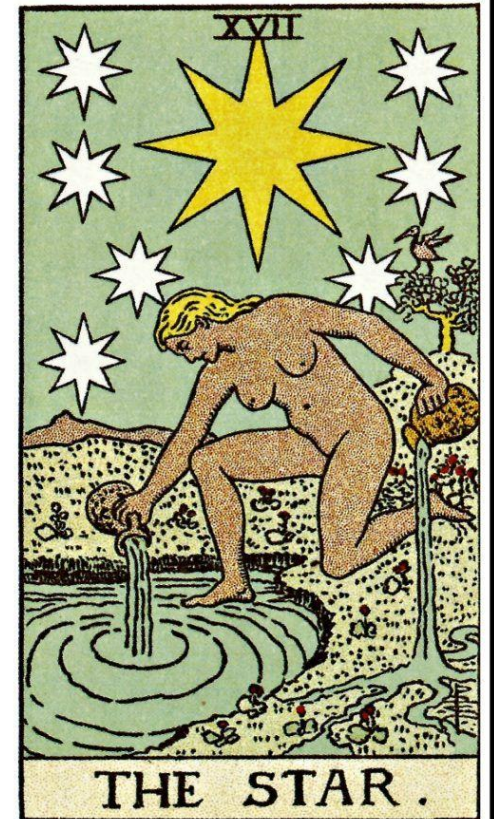
The Star

Element: Air
Zodiac Sign: Aquarius
Chakra: Crown Chakra
Colour: Electric blue, yellow, violet, purple
Crystal: Onyx, topaz, sapphire, amethyst
Metal: Silver, lead, uranium
Body: Calves, ankles, shins, circulatory system
Exercise: Jogging
Stance/Pose: Bridge pose

Affirmation:

"I act and speak with the Highest Good of All in mind."

lisafriedeborg.com





[This Photo](#) by Unknown Author is licensed under [CC BY](#)

XVIII – The Moon

Moving from the hopeful calm the Star Woman offers, our Fool may fall under the spell of the illusions of the Moon. “In this dreamy condition, the Fool is susceptible to fantasy, delusion and a false picture of the truth.” (Bunning). When the Fool ventures here, he may want to pay attention to dreams, musings and daydreaming. Walking in nature, making art or music is an effort to provide the unconscious with a channel for communication. The Moon is the urge to learn to cooperate with the depths inside that contain both constructive and Shadow energies that need to be explored. The Moon card may represent the assimilation of the Shadow within one’s consciousness



[This Photo](#) by Unknown Author is licensed under [CC BY-SA](#)

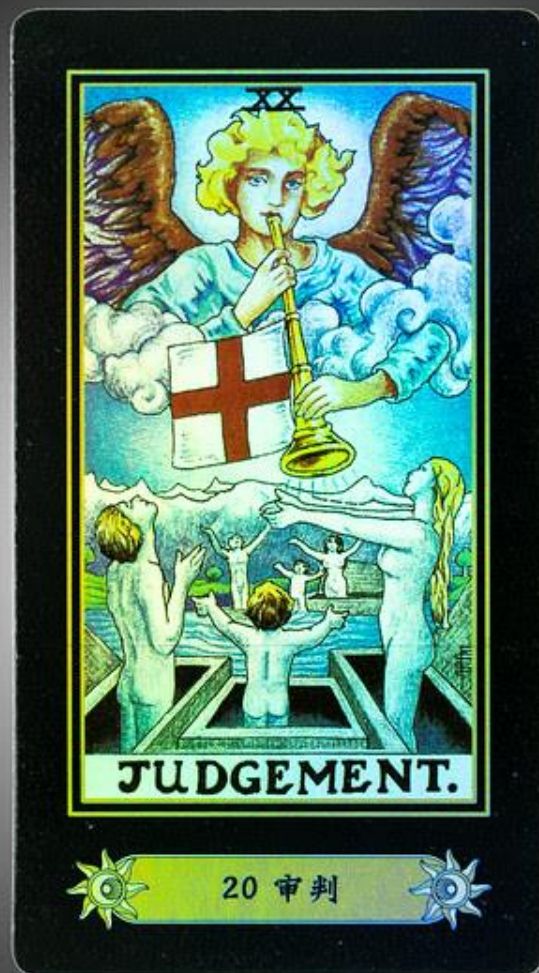


XIX – The Sun

Under the bright light of the Sun our Fool is in the place of total acceptance of his natural radiance. (Where did we see that feather before?) He is the naked babe on the horse. “You [the Fool] have become aware of your dark sides and have given them a place in your conscious life. You accept the consequences of your actions and have forged an identity that is not rigid and dogmatic, but able to accept [life’s] challenging circumstances.” (Nichols).

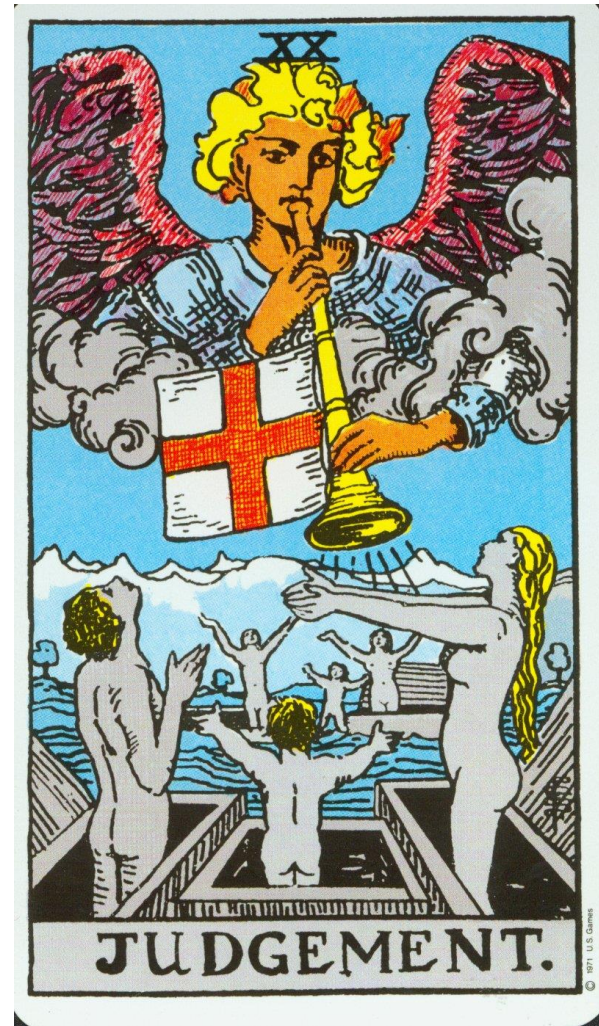


[This Photo](#) by Unknown Author is licensed under [CC BY-SA-NC](#)



XX - Judgement

“The Fool has been reborn...he feels absolved. He forgives himself and others...He may regret past mistakes, but he realizes they were due to the ignorance of his true nature. ..The angel on this card is the Fool’s Higher Self calling him to rise up and fulfill his promise.” (Bunning) “Because we have found a way of keeping the conscious and the unconscious in a state of living interaction, and have learned to understand the language of the unconscious...whenever we are knocked off balance, we quickly regain our composure.” (Nichols) “Judgement heralds the beginning of a new order – a new interaction between conscious and unconscious which will be “manifest in the final Tarot card of the Major Arcana”...(Nichols)





[This photo](#) by Unknown Author is licensed under [CC BY-NC-ND](#)

XXI – The World

The World dancer is encased in a protective, living wreath, an ellipse, not a circle “which has two foci – one at the top and the other at the bottom suggesting the coming together of two discrete halves to form one whole. This ellipse is called a mandorla, which carries the suggestion of future development. ..She dances as the spirit moves. She is contained within that sacred space where reality touches eternity. The Fool, WE, become the dance. We become part of the eternal present, connected to all. Jung wrote, “Experiencing the Self means that you are always conscious of your own identity...The Self enables you to remain the same through all conditions of your life.”

The World XXI is the archetype of the realized Self. The Self is made realized/conscious in the World card.

**DANCE AS IF NO ONE IS
WATCHING!**



**AND REMEMBER -- DON'T
WORRY – BE . . .**

