

Discover Better Composition

For Better Photographs

Better Composition

Dennis the Geek

- Susan the Granny
- Dan the Flower
- Marty the Weirdo
- Howard the Jogger
- Janet the Artist
- Kathy the Newbie
- Michael the Landscaper
- Marianne The Birder
- Peter the Traveler
- Ron the Smiler
- Judy the Jaguar
- Jim the Fireman

com·po·si·tion

/ˌkæmpəˈziʃ(ə)n/

noun

1. the **nature** of something's **ingredients** or constituents; the **way** in which a **whole** or mixture is **made up**.

In the case of photography ...

A photograph (whole) is a combination (made up) of visual elements (ingredients) arranged (way) to attract and hold the attention of a viewer and sometimes to *evoke an emotion* or communicate a message from the photographer.

Visual Elements

These are the visual elements that apply across almost all types of artistic work

Line

Shape

Pattern

Color

Tone

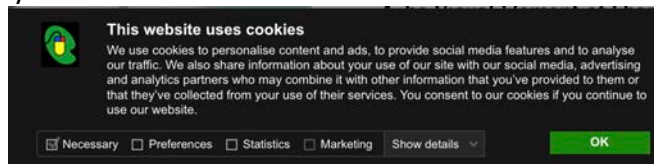
Texture

Form

Line

Line is the foundation of all drawing. It is the first and most versatile of the visual elements of art. Line in an artwork can be used in many different ways. It can be used to suggest shape, pattern, form, structure, growth, depth, distance, rhythm, movement and a range of emotions.

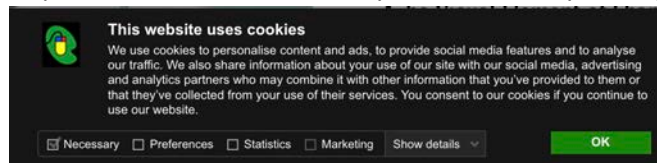
* If you use Shape link, uncheck unnecessary cookies on ArtyFactory web site



Shape

Shape* can be natural or man-made, regular or irregular, flat (edges joined in one plane) or 3-d(edges of a solid, joined across multiple planes), representational or abstract, geometric or organic, transparent or opaque, positive or negative, decorative or symbolic, colored, patterned or textured.

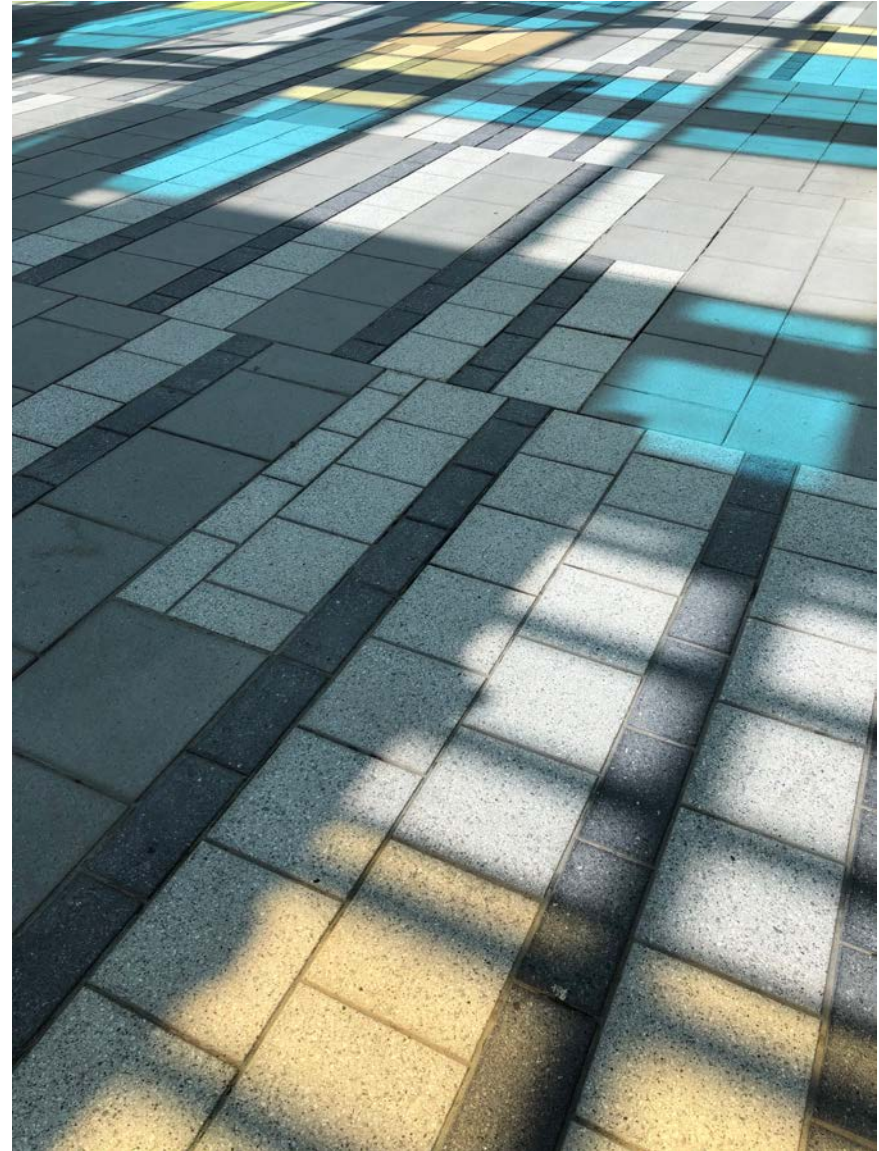
* If you use Shape link, uncheck unnecessary cookies on ArtyFactory web site



Pattern

The Visual Element of Pattern

- is constructed by repeating or echoing the elements of an artwork to communicate a sense of balance, harmony, contrast, rhythm or movement.



Color

The Visual Element of Color has the strongest effect on our emotions. It is the element we use to create the mood or atmosphere of an artwork.



Tone

The Visual Element of Tone defines the lightness or darkness of a color. The tonal values of an artwork can be adjusted to alter its expressive character.



Tone

Tone refers to the levels of brightness in the photograph, from solid black to pure white. Shadows are dark tones; highlights are bright tones.

The majority of nature photographs display a wide **range of tones**, from black or near black to white or near white.

A photograph with mostly dark tones is called **low key** and feels heavy and dramatic.

A photo with mostly light tones is called **high key** and feels bright and airy.
For fun searches:

- “images Low Key photographs”
- “images High Key photographs”

Wide Range of Tones



High Key



Tone

Tone can be used:

- to create a contrast of light and dark.
- to create the illusion of form.
- to create a dramatic or tranquil atmosphere.
- to create a sense of depth and distance.
- to create a rhythm or pattern within a composition.



Tone

Analysis of Tone

Does the artist use tone to create a dramatic atmosphere, the illusion of solidity or a sense of distance and depth?

What kind of tones are used:

- dark or light;
- strong or weak;
- harmonic or contrasting;
- dramatic or muted?



Tone

Words to Describe "Tone"

-tonal -tonality -halftone

-light -dark

-positive -negative

-counterchange -monochrome -shade -dramatic
- contrast

-luminosity -radiant

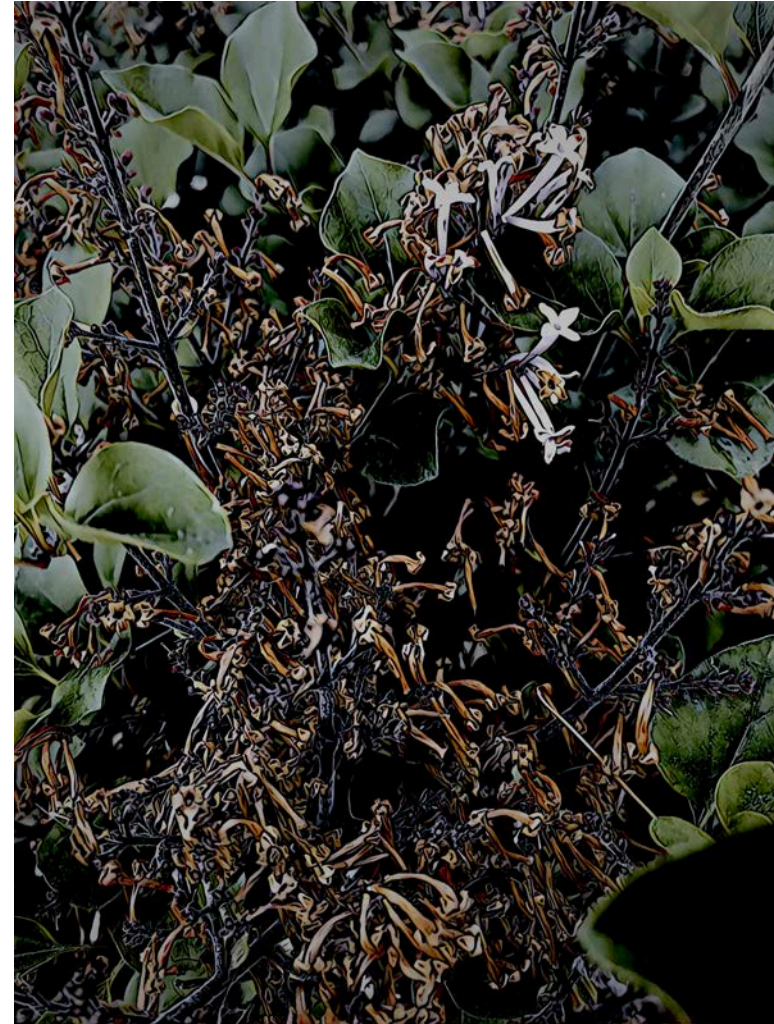
-hazy -silhouette

-somber -soft -pastel -subdued - subtle - muted

-density -value -cast -accent -emphasis

-distribution -effect

From <https://artyfactory.com/art_appreciation/visual-elements/tone.html>



Assignment



- Take six **good** photographs of any two subjects where the Visual Element of Tone is **featured**.
- Use a different point of view for each of the three images of each subject. Go up/down, in/out, straight on/angled. Conventional/creative/weird.
- Email the photos to me at dlf424@gmail.com
- Due, end of day, Tuesday
- Follow The Way