





# CLAUDE MONET



**Self-Portrait, oil on canvas,  
1886**

COMPILED BY HOWIE BAUM

## ARTIST PRESENTATIONS

Over the past 4 years, I have given presentations about 6 famous artists, in order of the year they were born:

**Leonardo da Vinci – 1452 to 1519**



**Michelangelo – 1475 to 1564**



**Rembrandt van Rijn – 1606 to 1669**



**Claude Monet – 1840 to 1926 (today's presentation)  
(My Dad was 16 when Monet died)**



**Vincent Van Gogh – 1853 to 1890**



**Pablo Picasso – 1881 to 1973**





# Claude Monet

Born: November 14, 1840

Died: December 5, 1926

From: France

Time  
Period: Impressionism

## About:

Claude Monet was the leader of the impressionist art movement. Monet is known for his paintings of landscapes and nature scenes. He enjoyed painting outside and painting the same scene at different times of the day to capture different lighting. Reflections are also commonly depicted in Monet's work.

## Famous Work:



Water Lilies



Water Lily Pond



Sunrise

Oscar-Claude Monet lived from November 14<sup>th</sup>, 1840 to December 5<sup>th</sup>, 1926.

He was a French painter and founder of impressionist painting which led to the Art Movement of Modernism.

He was a devoted artist who painted nature as he perceived it.

He was described as “The Father of the French Impressionist art Movement”

# CHRONOLOGY OF MONET'S LIFE

## Early years

**November 14, 1840:** Oscar Claude Monet is born into a humble Parisian household, the son of a shopkeeper.



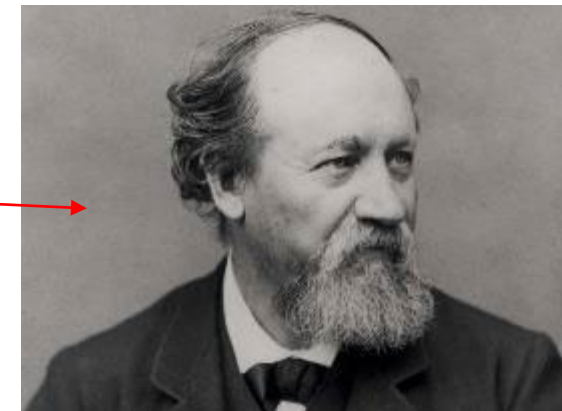
**1845:** He moves with his family to Le Havre, on the Normandy coast.



**1856:** Monet, who has a lot of artistic talent, makes sketches of local celebrities and sells them in a picture framer's shop.



He also meets Eugene Bodin, who introduces him to “en plein air” (outdoor) painting on the Normandy coast.





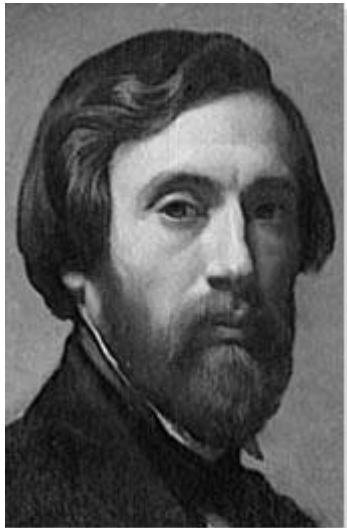
**1857:** Monet's mother Louise dies, and Monet abandons his academic studies to focus on painting.

**1859:** He travels to Paris to study at Martin François Suisse's art Studio, where he meets Camille Pissarro.



**1860:** Monet is conscripted into the army and serves in Algeria. But he catches typhoid fever and returns to France to recuperate.

His family then buys him out of the army (and so he does not complete his two years' military service)



Charles Gleyre



**1862:** He returns to Paris, this time to study at the Studio of Charles Gleyre - where he meets Auguste Renoir, Frederic Bazille, Alfred Sisley, and Paul Cezanne.

## Monet starts to exhibit

**1865:** He makes his debut at the Salon in Paris, exhibiting the “Mouth of the Seine at Hornfleur” and achieving positive reviews.



**1866:** Monet's ~~Woman in the Green Dress~~ is submitted to the Salon, and again generates positive reviews.

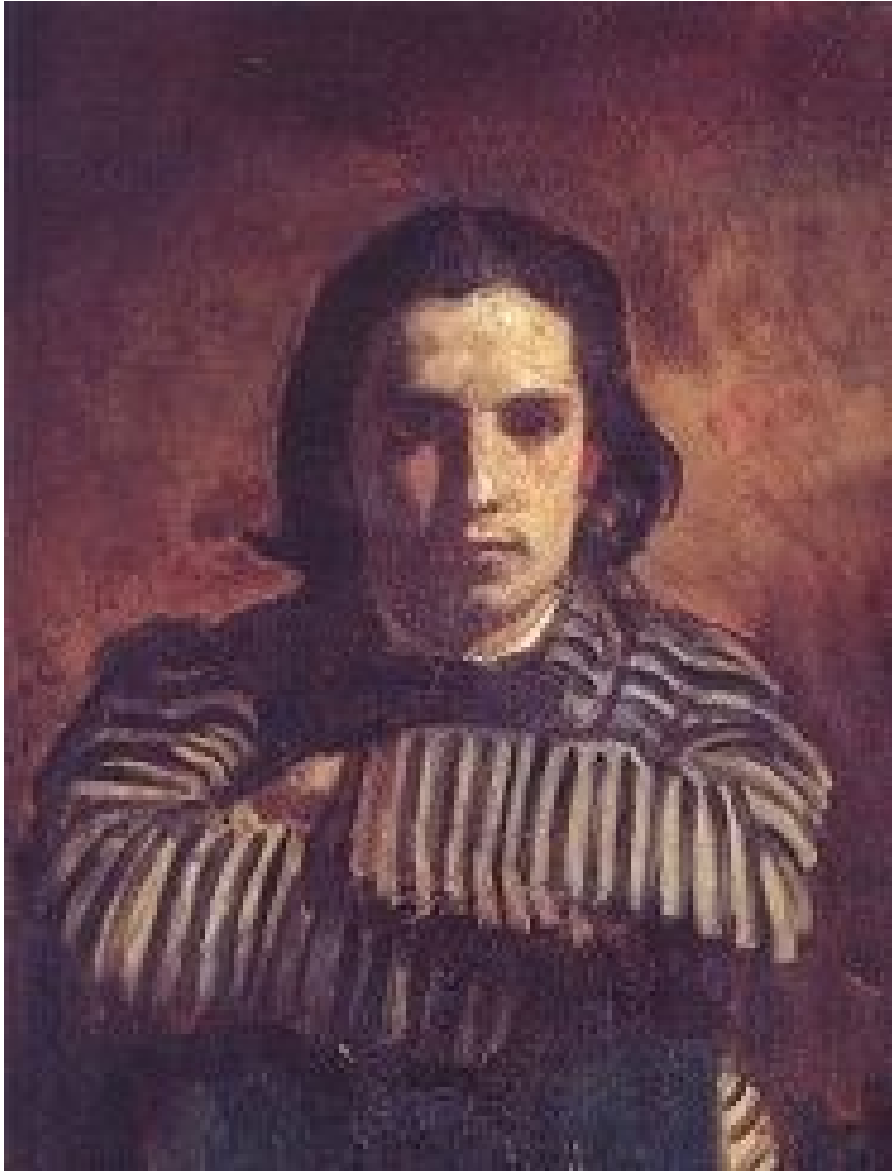
**1867:** Monet's girlfriend, Camille Doncieux, becomes pregnant. Monet later marries Doncieux on June 28, 1870.

**1867, 1869, 1870:**

His entries to the Salon are rejected (there was no Salon in 1868).

These rejections were a serious problem for him : he had a young child to support and, unlike Manet and Edgar Degas, did not have family money he could rely upon.

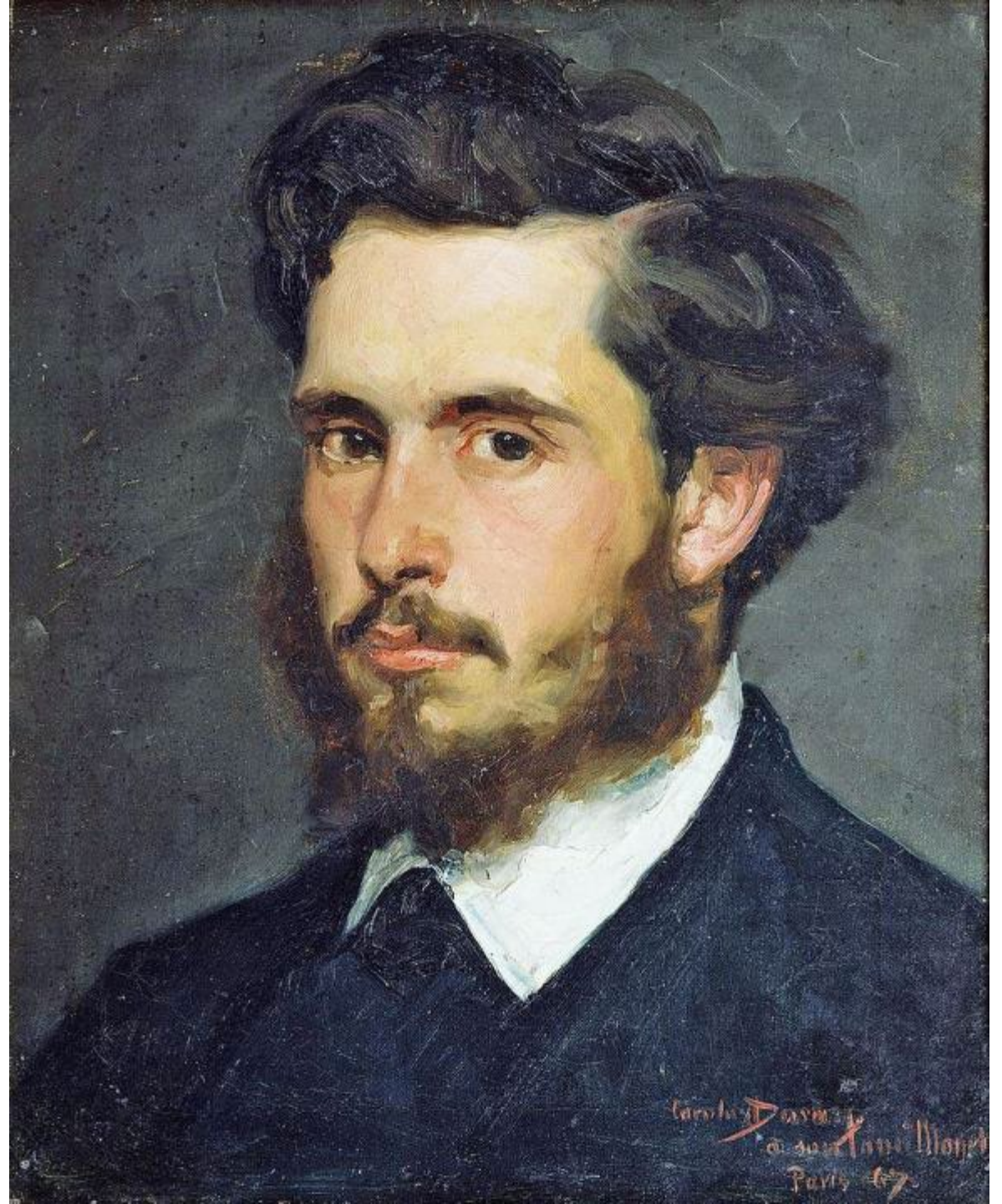




**PORTRAIT OF CLAUDE MONET BY GILBERT DE SEVERAC, WHEN CLAUDE WAS 20 YEARS OLD.**

**PORTRAIT OF CLAUDE MONET  
(WHEN HE WAS 27)**

**PAINTED BY CAROLUS-DURAN, IN 1867**





Claude Monet looking at his cell phone !!

## War, London and the Impressionist Exhibitions

**1870:** Napoleon III declares war on the Prussian empire. This turns out to be a disastrous tactical decision, with the French defeated in late 1870 and Paris besieged at the end of the year.

Monet flees with Camille and his young son Jean to London.

When in London, Monet meets the art dealer Paul Durand-Ruel (who was to become the impressionists' most important supporter) and studies the works of Constable and Turner in the National Gallery.

**1871:** After travelling to Holland, Monet settles in Argenteuil, France.

**1874:** Monet helps to organize the First Impressionist Exhibition.

The reviews are hostile, with Monet's **Impression: Sunrise** singled out for particular criticism.

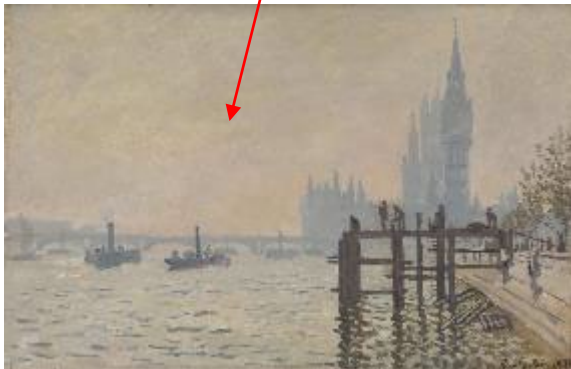




WOMEN IN THE GARDEN 1867



BOULEVARD DES CAPUCINES 1873



THE THAMES BELOW WESTMINSTER 1871



WOMAN WITH A PARASOL - THE RUE MONTORGUEIL IN PARIS. CELEBRATION OF JUNE 30TH, 1875



ROUEN CATHEDRAL: THE FACADE AT SUNSET 1894



IN PARIS. CELEBRATION OF JUNE 30TH, 1878



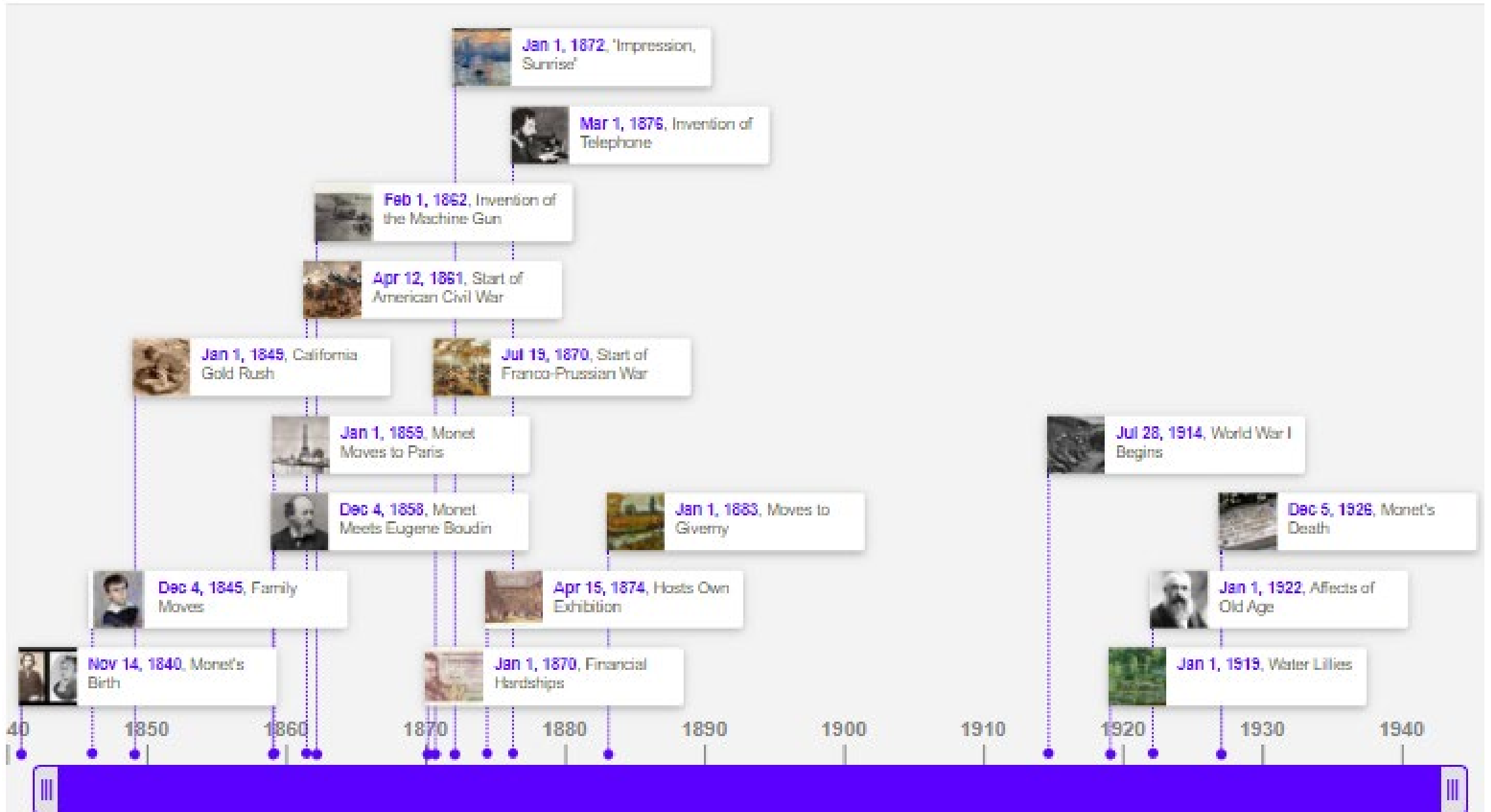
WATER LILIES 1920

# Timeline of Claude Monet

By ashgaulin33

Timeline

List



CLAUDE MONET



PIERRE-AUGUSTE RENOIR



EDOUARD MANET

EDGAR DEGAS

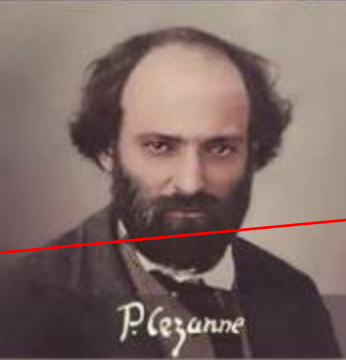


CAMILLE PISSARO



ALFRED SISLEY

PAUL CEZANNE



BERTHE MORISOT



JEAN FREDERICK BAZILLE

GUSTAVE CAILLEBOTTE



ARMAND GUILLAUMIN



MARY CASSATT

These are the 12 Main Artists Who Painted During The Impressionist Art period.

We are fortunate that portrait photography began in 1850, so photos of the artists could be taken.

# IMPRESSIONISM

CLAUDE MONET



#1 | Claude Monet | *The Banks at Argenteuil*  
1872 | oil on canvas | 60 x 81 cm  
Musée d'Orsay, Paris, France



#2 | Edgar Degas | *The Rehearsal*  
1873-78 | oil on canvas | 47 x 61 cm  
Fogg Art Museum, Harvard University, Cambridge, MA

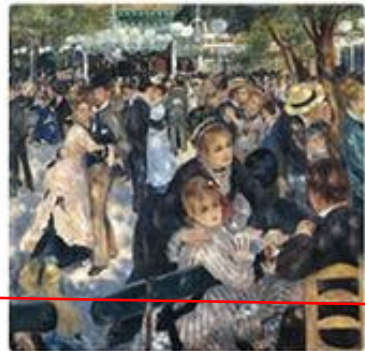


#3 | Berthe Morisot | *Women at Her Toilette*  
1875 | oil on canvas | 60 x 80 cm  
Art Institute of Chicago, Chicago, IL

BERTHE MORISOT

EDGAR DEGAS

PIERRE- AUGUSTE  
RENOIR



#4 | Pierre-Auguste Renoir | *Dance at the Moulin de la Galette*  
1876 | oil on canvas | 131 x 176 cm  
Musée d'Orsay, Paris, France



#5 | Mary Cassatt | *Mother About to Wash Her Sleepy Child*  
1880 | oil on canvas | 100 x 66 cm  
Los Angeles County Museum of Art, Los Angeles, CA



#6 | Alfred Sisley | *Snow at Lesmeux*  
1878 | oil on canvas | 61 x 50 cm  
Musée d'Orsay, Paris, France

ALFRED SISLEY

MARY CASSATT

CAMILE PISSARO



#7 | Camille Pissarro | *French Theatre Square, Paris, Rain*  
1898 | oil on canvas | 73 x 91 cm  
Minneapolis Museum of Arts, Minneapolis, MN



#8 | Gustave Caillebotte | *Paris Street, Rainy Day*  
1877 | oil on canvas | 212 x 276 cm  
Art Institute of Chicago, Chicago, IL



#9 | Edouard Manet | *A Bar at the Folies-Bergère*  
1882 | oil on canvas | 96 x 130 cm  
Courtauld Gallery, London, United Kingdom

EDOUARD MANET

GUSTAVE  
CAILLEBOTTE

# IMPRESSIONISM

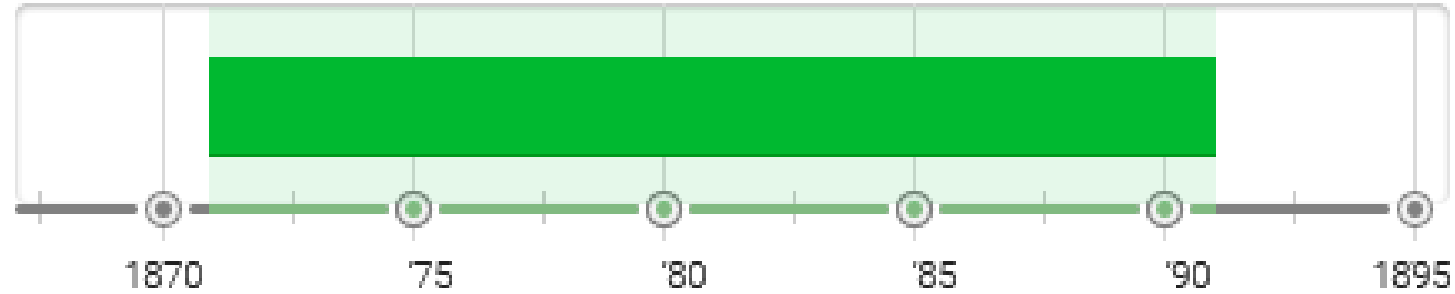
**It is perhaps the most important movement in the whole of modern painting.**

At some point in the 1860s, a group of young artists decided to paint, very simply, what they saw, thought, and felt.

They weren't interested in painting history, mythology, or the lives of great men, and they didn't seek perfection in visual appearances.

Instead, as their name suggests, the Impressionists tried to get down on canvas an "impression" of how a landscape, thing, or person appeared to them at a certain moment in time.

**IT STARTED IN 1862 AND WENT TO 1892**



**The name "Impressionism" came from the title to Monet's painting – "Impression: Sunrise"**



Claude Monet Painting by the Edge of a Wood  
by John Singer Sargent (1885)

## IMPRESSIONISM AND PAINTING OUTDOORS – “EN PLEIN AIR”

This often meant using much lighter and looser brushwork than painters had used, up until that point, as well as painting out of doors, “En plein air”.

The Impressionists also rejected official exhibitions and painting competitions set up by the French government.

Instead, they organized their own group exhibitions, which the public was initially very hostile to.

All of these choices predicted the emergence of modern art, and the whole associated philosophy of the avant-garde.

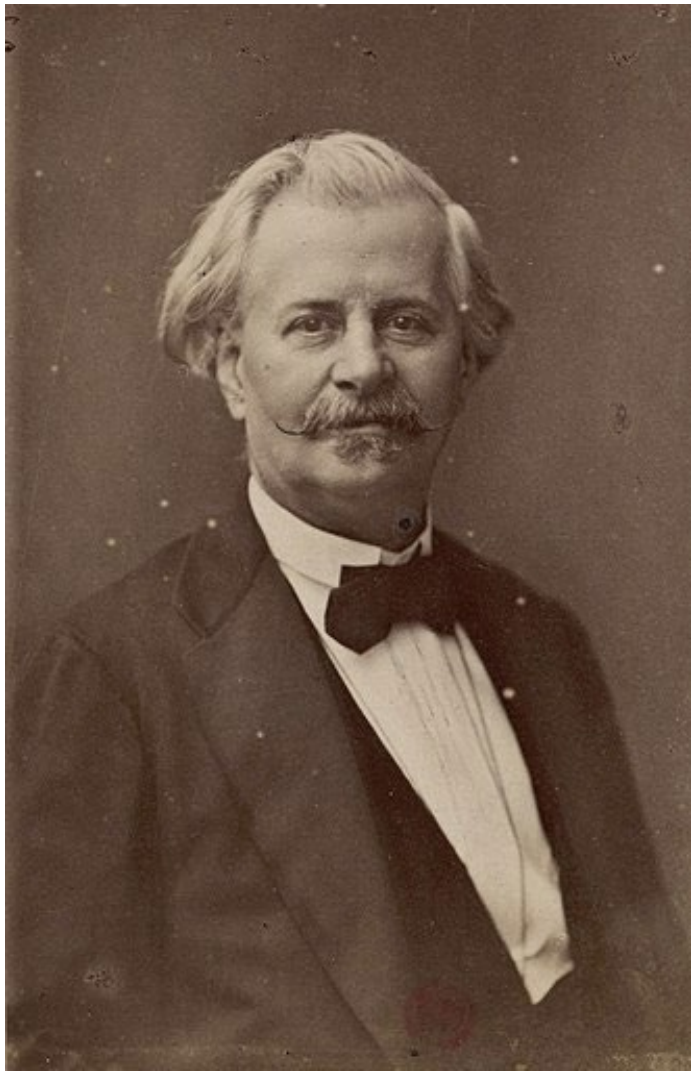
## THE PAINTING THAT STARTED THE IMPRESSIONISM MOVEMENT !

As one of the founders of Impressionism – the term derives from the title of one of Monet's own paintings, **Impression, soleil levant, painted in 1872.**

The artist epitomized the movement with his free brushstrokes, bold, complementary colors and tendency to paint "en plein air" (i.e. outdoors).

Monet is typically known for his landscapes, his scenes of nature and of course the water lilies at his home in Giverny, France.





**Louis Leroy (1812 - 1885)**

He was a French 19th-century printmaker, painter, and playwright.

**Louis Leroy, for Le Charivari, is often quoted in his review on Monet's work.**

Leroy's article took the form of a dialogue between two skeptical viewers of the work:

**"Impression I was certain of it. I was just telling myself that, since I was impressed, there had to be some impression in it — and what freedom, what ease of workmanship!**

**A preliminary drawing for a wallpaper pattern is more finished than this seascape."**

## 5 CHARACTERISTICS OF IMPRESSIONIST ART

There are 5 aspects of Impressionism that will help to understand this art form on a deeper level but also help easily identify Impressionism art, when you see it:

1. **Quick, loose brush strokes**
2. **Bright paintings**
3. **“En plein air”** (Painted Outside)
4. **Relative color** - Impressionist artists didn't like to use “local color”. They wanted to depict objects in the light that they saw at certain times of day or in certain environments.
5. **The image of the painting is clearer from farther away**





Colorized photo of Claude Monet, in 1923

Colored by  
Dana Keller

# THE 11 TIME PERIODS OF MONET'S LIFE



1858 to 1871

WOMAN IN THE GARDEN (1867)



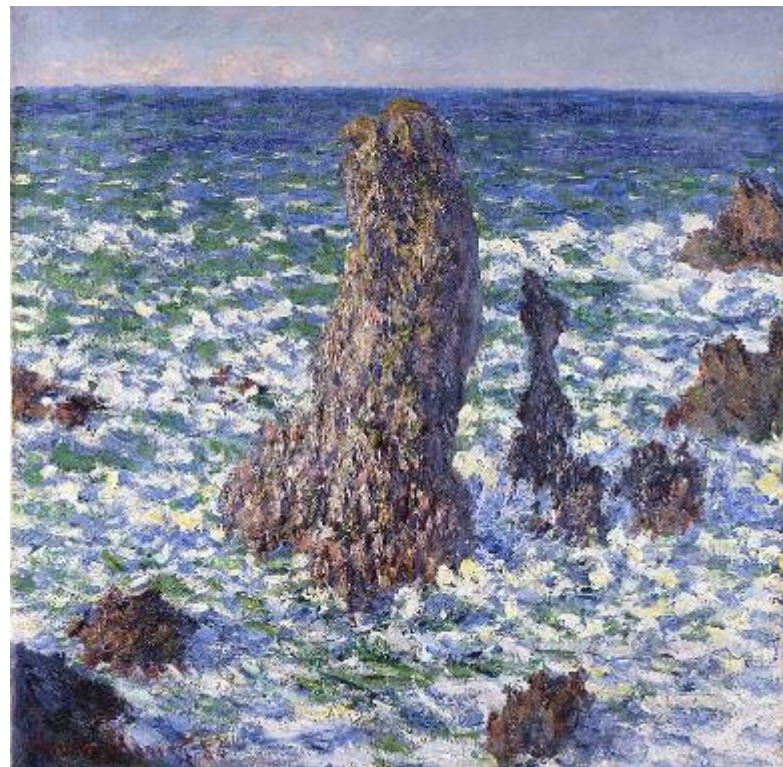
1872 to 1878

ARRIVAL OF THE NORMANDY  
TRAIN, GARE SAINT-LAZARE,  
FRANCE



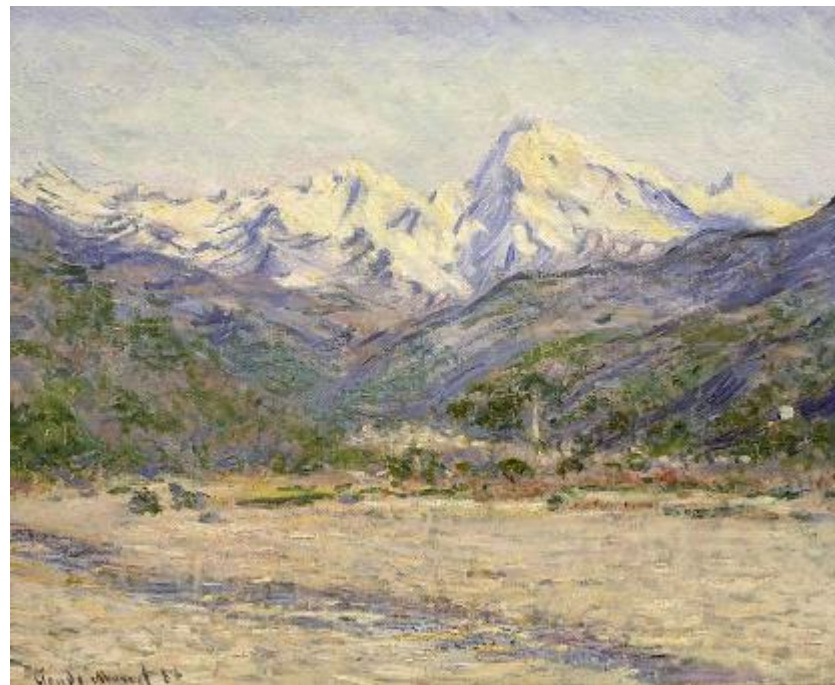
1878 to 1881

BREAKING WAVES



1884 TO 1888  
LES PYRAMIDES DE PORT-  
COTON, EFFET DE SOLEIL

(THE PYRAMIDS OF PORT-COTON,  
SUN EFFECT)



1884  
VALLEY OF THE NERVIA

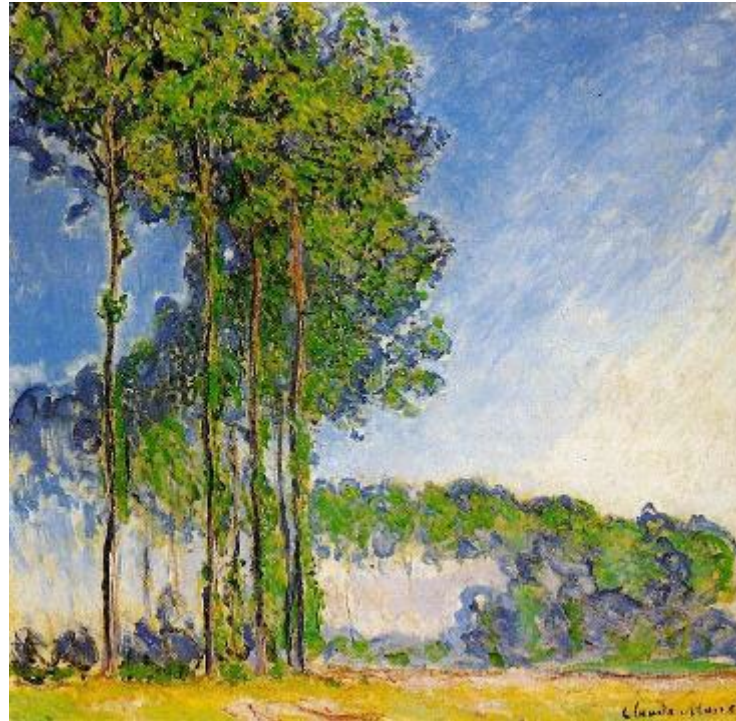


1881 TO 1883  
CLIFF WALK AT POURVILLE





1888  
VIEW-OF-ANTIBES-FROM-THE-  
PLATEAU-NOTRE-DAME



1888 to 1892  
POPLARS - VIEW-FROM THE  
MARSH

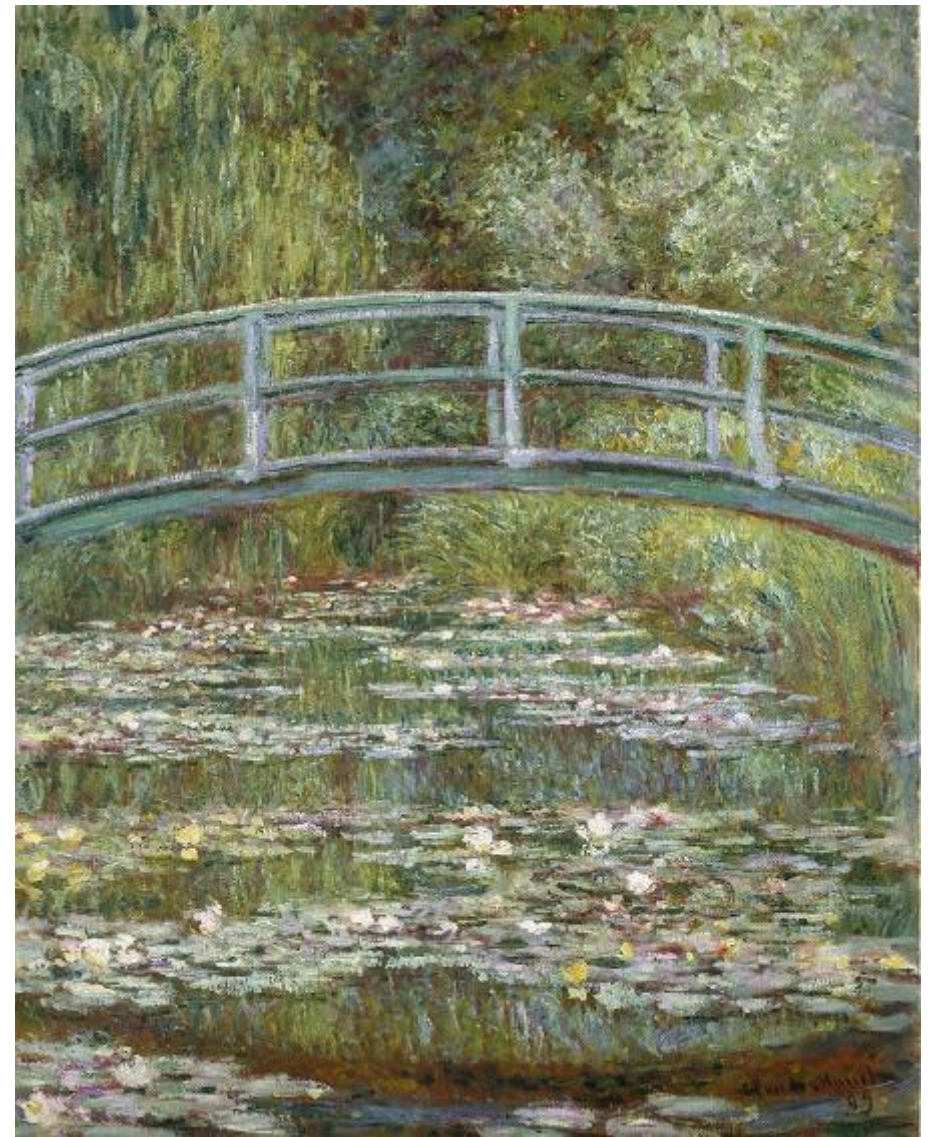


1899 to 1904  
LE PARLEMENT, COUCHER DE SOLEIL  
- KUNSTHAUS ZÜRICH

(PARLIAMENT, SUNSET - KUNSTHAUS  
ZÜRICH)



1900 to 1926  
LE GRAND CANAL - VENICE



1897 TO 1926  
WATER LILY SERIES, PAINTED AT HIS HOME IN  
GIVERNY, FRANCE

• PAINTING TIMELINE	QUANTITY OF PAINTINGS COMPLETED
• <u>Works 1858–1871 (Paris, London, Amsterdam)</u>	<u>192</u>
• <u>Works 1872–1878 (Argenteuil)</u>	<u>311</u>
• <u>Works 1878–1881 (Vétheuil)</u>	<u>201</u>
• <u>Works 1881–1883 (Poissy)</u>	<u>145</u>
• <u>Works 1884 (Bordighera, Italy)</u>	<u>102</u>
• <u>Works 1884–1888 (Giverny)</u>	<u>205</u>
• <u>Works 1888 (Antibes)</u>	<u>35</u>
• <u>Works 1888–1898 (Giverny)</u>	<u>306</u>
• <u>Works 1899–1904 (London)</u>	<u>192</u>
• <u>Works 1900–1907 (Giverny)</u>	<u>75</u>
• <u>Works 1908 Venice</u>	<u>36</u>
• <u>Works 1908–1926 Giverny</u>	<u>90</u>

**1,367 TOTAL PAINTINGS !!**

# MONET'S EARLY ART WORKS - 1858-1871 (PARIS, LONDON, AMSTERDAM)



**VIEW FROM ROUELLES**  
1858

The painting depicts the landscape surrounding a small stream, either the Rouelles or the Lézarde, in the Rouelles district of Le Havre in Normandy, France.

**Painted when Monet was only 17, it is the earliest known painting by the artist.**

It is signed "O. Monet", as it was painted before Oscar-Claude Monet dropped the 'Oscar' from his name in his early twenties.

**CORNER OF A STUDIO - 1861**





**GREYHOUND'S HEAD - 1862**

**STILL LIFE WITH  
BOTTLE, CARAFE,  
BREAD AND WINE 1862**





**HEAD OF A WOMAN - 1862**

**A FARMYARD IN  
NORMANDY  
1863**





**BOATYARD NEAR  
HONFLEUR  
1864**

**ROAD IN A FOREST**  
**1864**





**COASTAL LANDSCAPE - 1864**



**ROAD BY SAINT-SIMÉON FARM**  
**1864**

LE RUE DE LA BAVOLE AT  
HONFLEUR  
1864



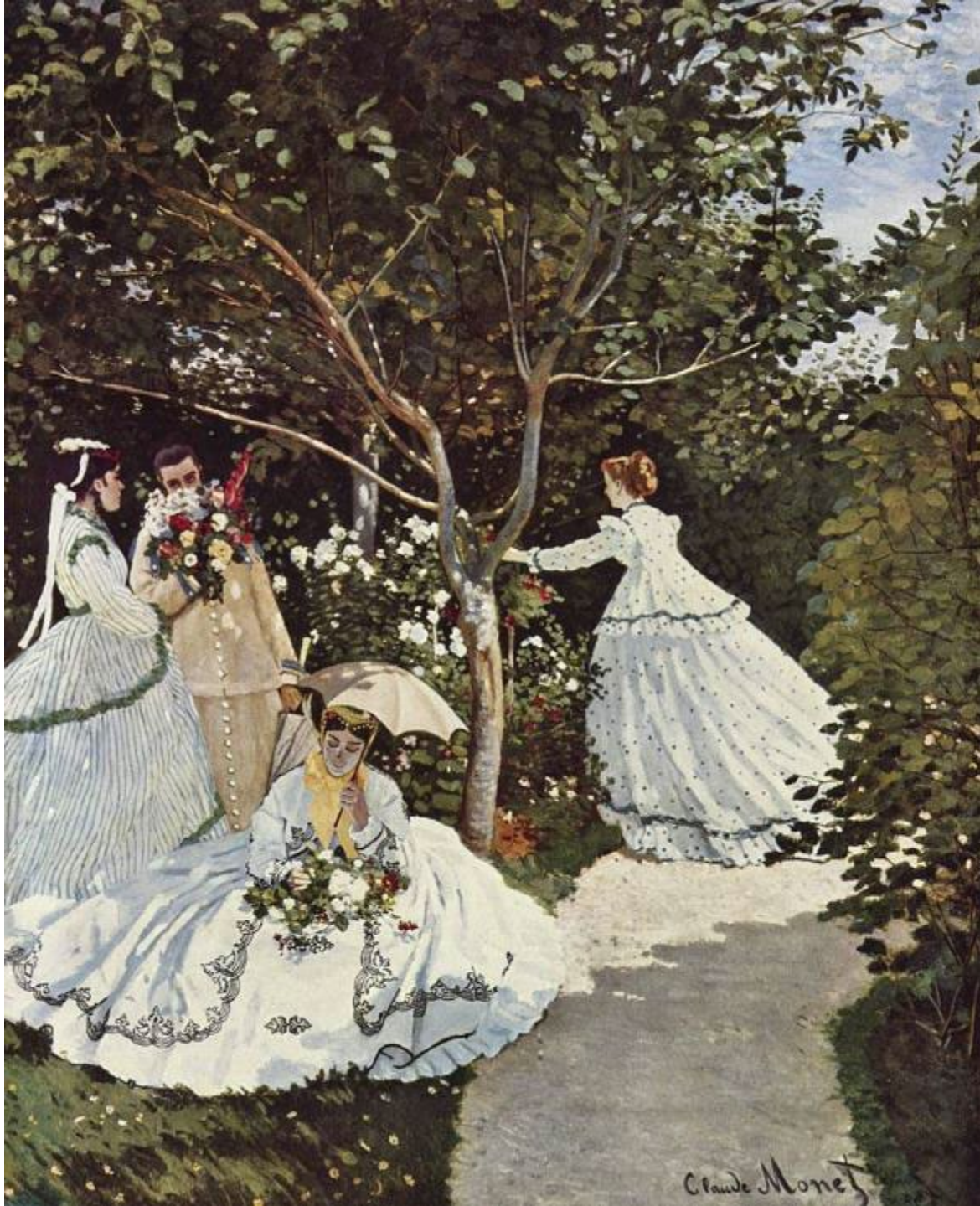


**HAULING A BOAT  
ASHORE,  
HONFLEUR  
1864**

## **MOUTH OF THE SEINE AT HONFLEUR**

Painted in 1865, it indicates the influence of Dutch maritime painting.





## **WOMEN IN THE GARDEN** **Painted in 1866**

It was painted when he was 26.

It is a large work painted en plein air; the size of the canvas necessitated Monet painting its upper half with the canvas lowered into a trench he had dug, so that he could maintain a single point of view for the entire work.

The setting is the garden of a property he was renting.

His companion and future wife Camille Doncieux posed for the figures.

Monet finished the work indoors, and used magazine illustrations to render fashionable clothing.

## WOMAN IN THE GARDEN

It was painted in 1867 and is a study in the effect of sunlight and shadow on color.





**GARDEN AT SAINTE-ADRESSE  
("JARDIN À SAINTE-ADRESSE")**

**1867**

## THE LUNCHEON,

Painted in 1868, It features Camille Doncieux and Jean Monet, their son

It was rejected by the Paris Salon of 1870 but included in the first Impressionists' exhibition in 1874.



## THE MAGPIE

Painted in 1868, it is one of Monet's early attempts at capturing the effect of snow on the landscape.





## LA GRENOUILLÈRE

Painted in 1869, it is a small plein-air painting, created with broad strokes of intense color

## THE THAMES BELOW WESTMINSTER

It was painted on a trip to London in 1870-1871.

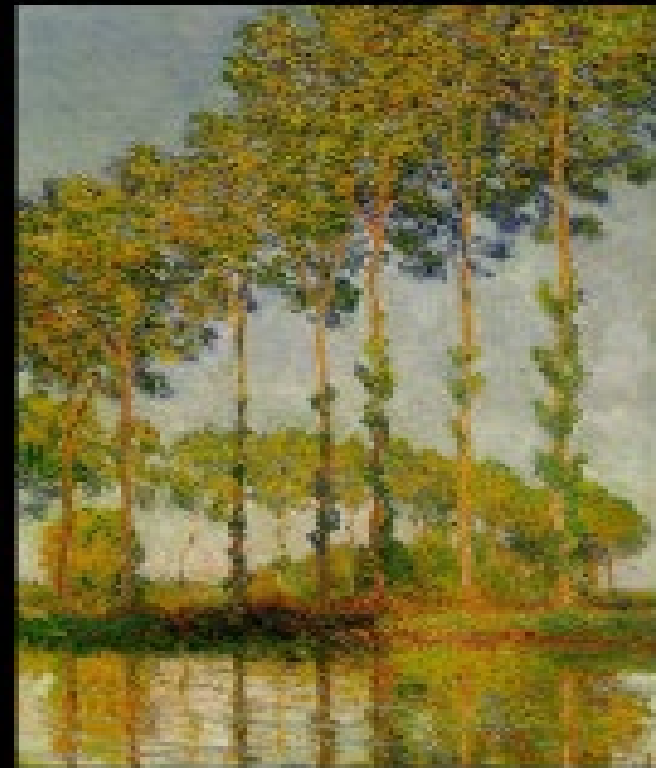
The constant, diffuse lighting unites the painting and softens the contours, while giving a blue tinge to the Parliament buildings.

The subtle variations of color and gradations of tone in the sky merge almost seamlessly with those of the water, the two separated only by the bridge.

Apart from the green of the trees and their reflections and the streak of red on a boat hull, the color scheme is dominated by blues, violets and purples.



Painted the same subject in different weather,  
seasons, and times of the day



Monet saw that the colors of a  
scene changed as the light and  
weather changed



Monet's painting series of grain or haystacks, painted at different times throughout the day, received critical acclaim from opinion-makers, buyers, and the public when exhibited at Durand-Ruel's gallery.



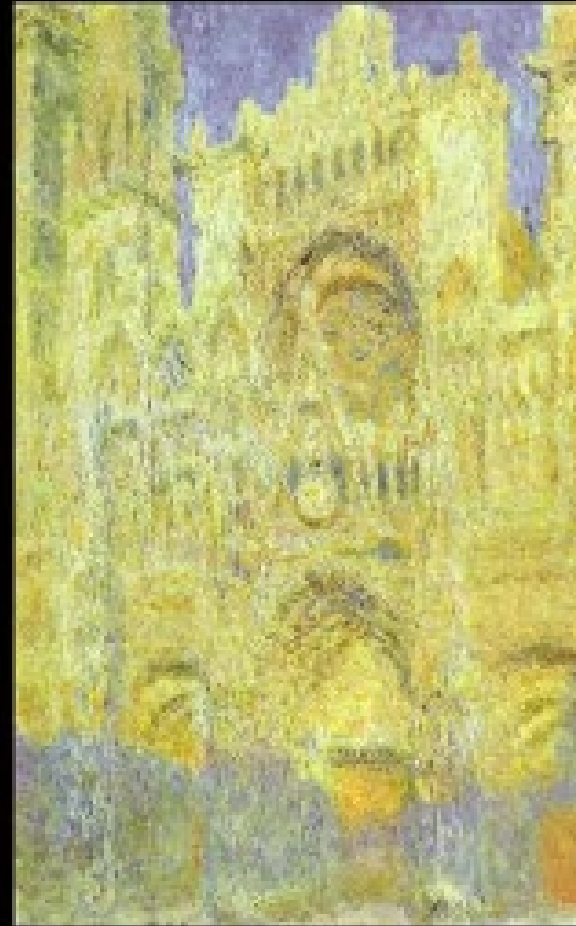
# Color constantly changes according to the sun's position



*Rouen Cathedral  
Morning Sun,  
1893*



*Rouen Cathedral  
at Midday,  
1894*



*Rouen Cathedral  
in the Evening,  
1894*

After painting many haystacks, he then turned his sights to the Rouen Cathedral, making similar studies of the effects of changing mood, light, and atmosphere on its facade at different times of the day.

The results were dozens of canvases of brilliant, slightly exaggerated colors that formed a visual record of accumulated perceptions.

In his 1872 painting, Springtime, Monet was interested in studying how unblended dabs of color could suggest the effect of brilliant sunlight, filtered through leaves.





**JEAN MONET ON HIS  
HOBBY HORSE**

**1872**

**RÉGATES À ARGENTEUIL**

**1872**





**SHIPS RIDING ON THE  
SEINE AT ROUEN**

1872

## "CAMILLE MONET ON A GARDEN BENCH"

Monet's painting in 1873, of his wife, Camille Doncieux, is the most enigmatic of Monet's rare genre pictures.

Numerous interpretations have been offered, yet nothing has been found in the literature or theater of Monet's time that corresponds to this scene.

The most telling clue may be biographical: the death of Camille's father in September 1873.

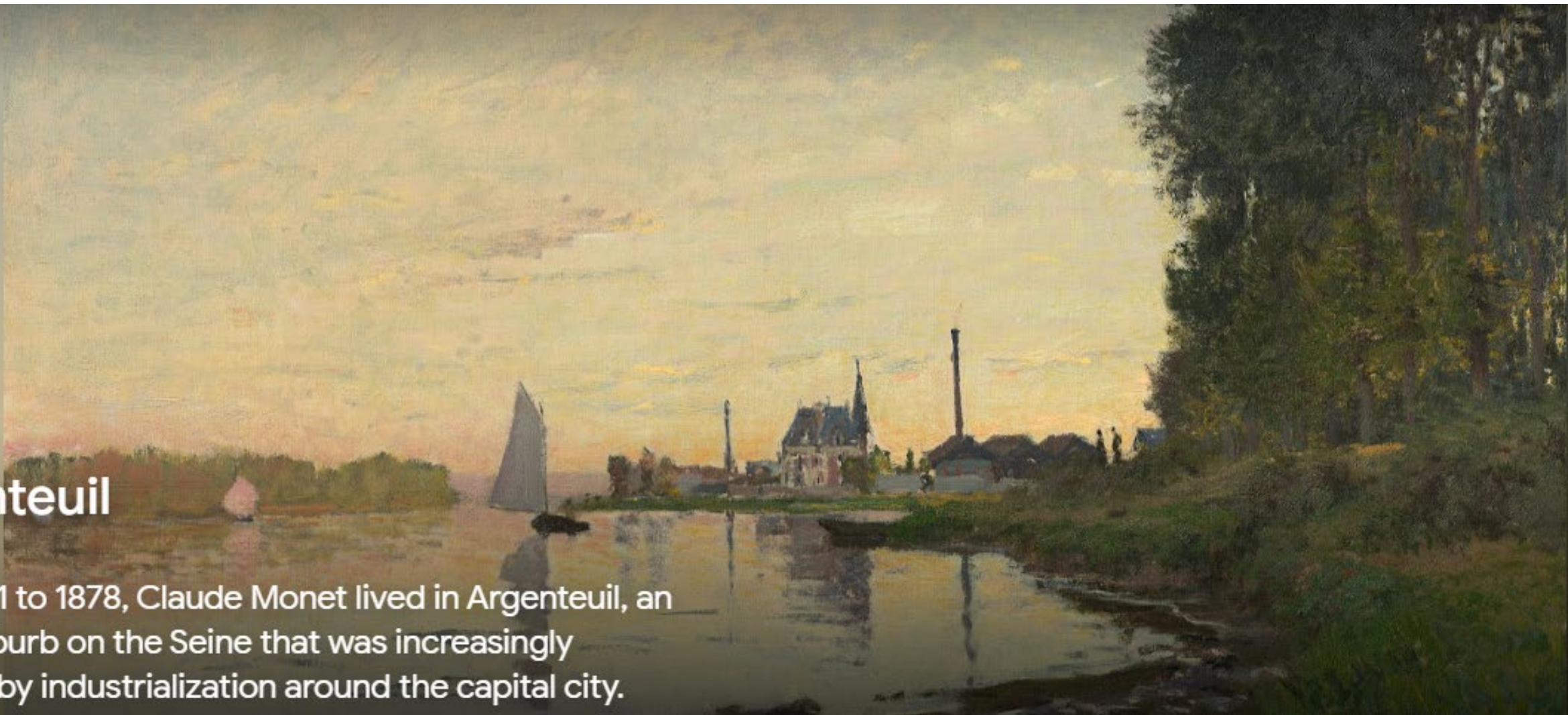
Camille was an impassive model, but here she shows sadness, while holding a note in her gloved hand.

Later, Monet identified the gentleman as a neighbor—perhaps one who had called to offer his condolences and a consoling bouquet.



## Argenteuil

From 1871 to 1878, Claude Monet lived in Argenteuil, an idyllic suburb on the Seine that was increasingly affected by industrialization around the capital city.





**Monet's house at Argenteuil  
1873**



**BOULEVARD DES CAPUCINES  
1873**

It's an oil on canvas street scene painting of the famous Paris boulevard.

Claude Monet Painting in his  
Garden in Argenteuil, 1873

Painted by Pierre-Auguste  
Renoir





The Seine at Argenteuil, 1873

by Claude Monet



AN 1874 OIL ON CANVAS  
PAINTING, MONET PAINTING IN  
HIS STUDIO BOAT,

Painted by Edouard Manet (1832-83)

The French modernist painter. Claude Monet (1840-1926) took the impressionist ideal of painting outdoors one step further and built himself a floating studio to better capture scenes on the Seine river in France.

The woman in the painting is Monet's first wife, Camille.

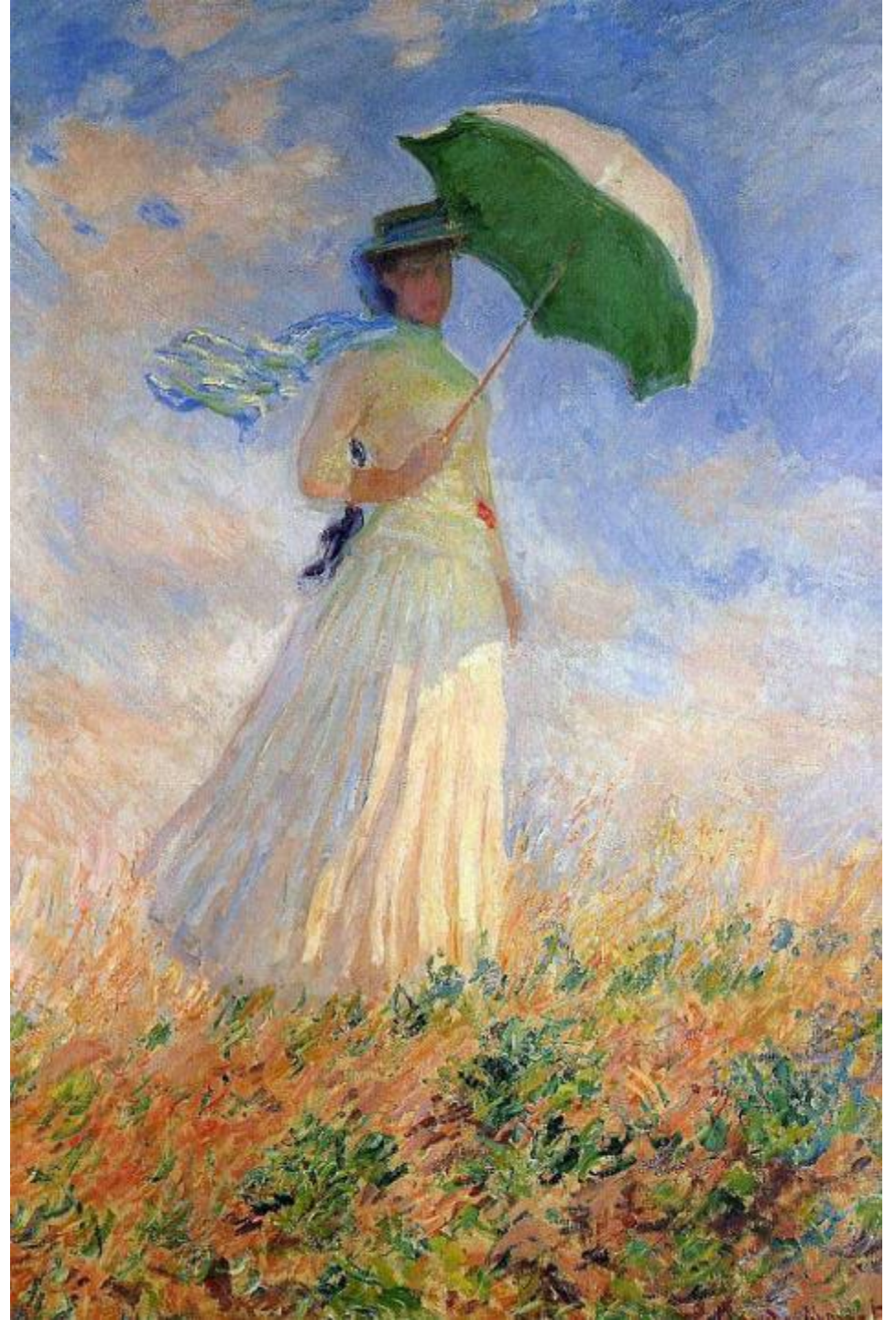


**WOMAN WITH A PARASOL  
MADAME MONET AND HER SON, JEAN  
1875**





OTHER PAINTED  
VIEWS OF HIS WIFE  
CAMILLE, BY  
MONET





**PORTRAIT OF THE PAINTER CLAUDE  
MONET BY THE ARTIST PIERRE-AUGUSTE  
RENOIR**

**1875**

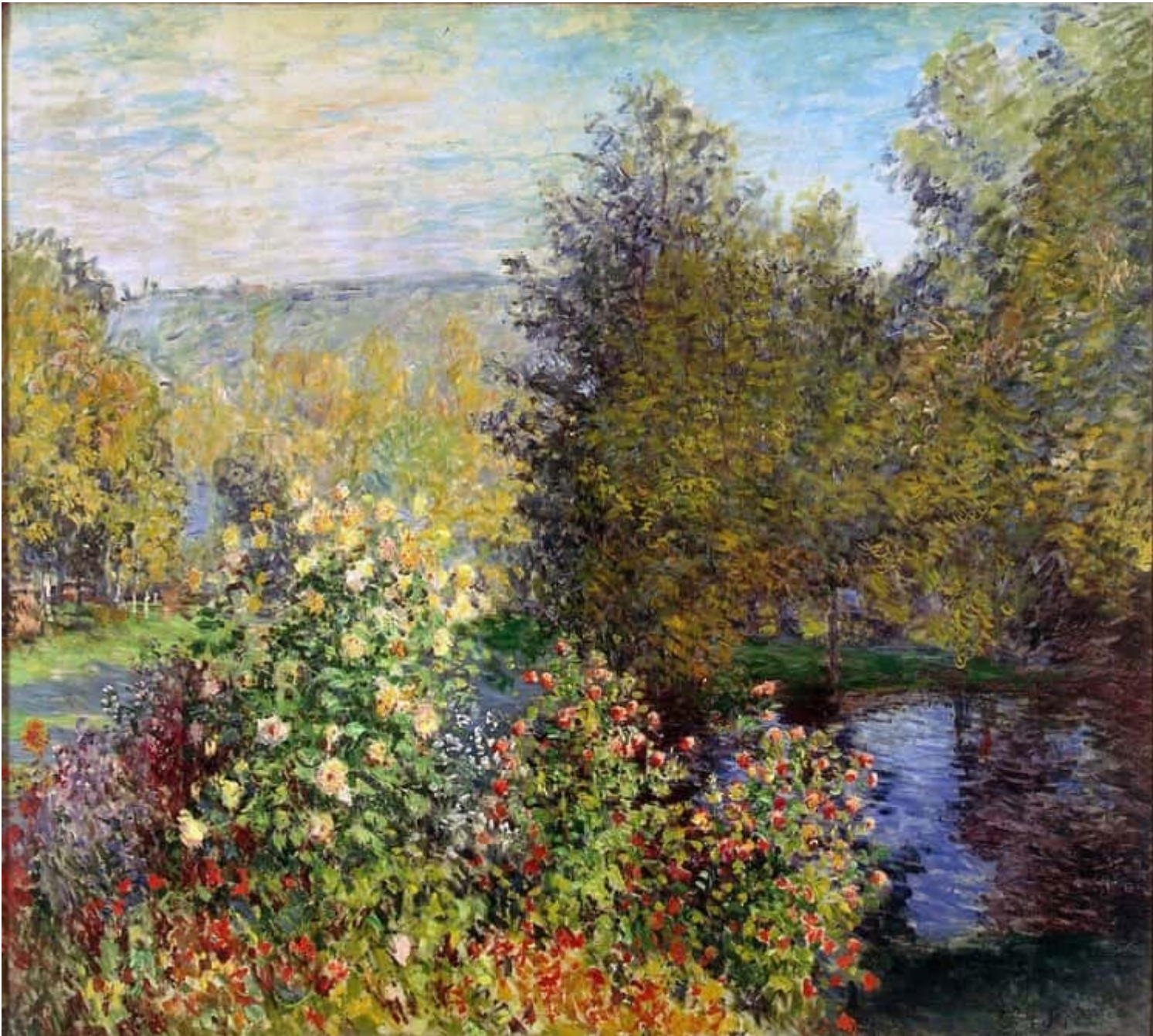
## MONET WAS INSPIRED BY JAPANESE ART.

**Over his lifetime, Monet amassed an impressive collection of Japanese Ukiyo-e wood block prints, many of which are still on view at his Giverny home.**

While his fascination with Japanese culture is evidenced in his earlier work on a more superficial level, as in *La Japonaise* (Camille Monet in Japanese Costume) (1876), he later incorporated the ethos of Japanese “pictures of the floating world” on a much deeper level.

The Japanese-style bridge and waterlily pond that he designed became Monet’s predominating subject matter in the last decades of his life.





## **Corner of the Garden at Montgeron**

Painted in 1877, it is a typical example of how the Impressionist artists sought to convey a passing glimpse or impression of nature as seen by the human eye.

For this purpose, Monet took as his motif a blooming garden, and very successfully created an image of vivid, changing nature.



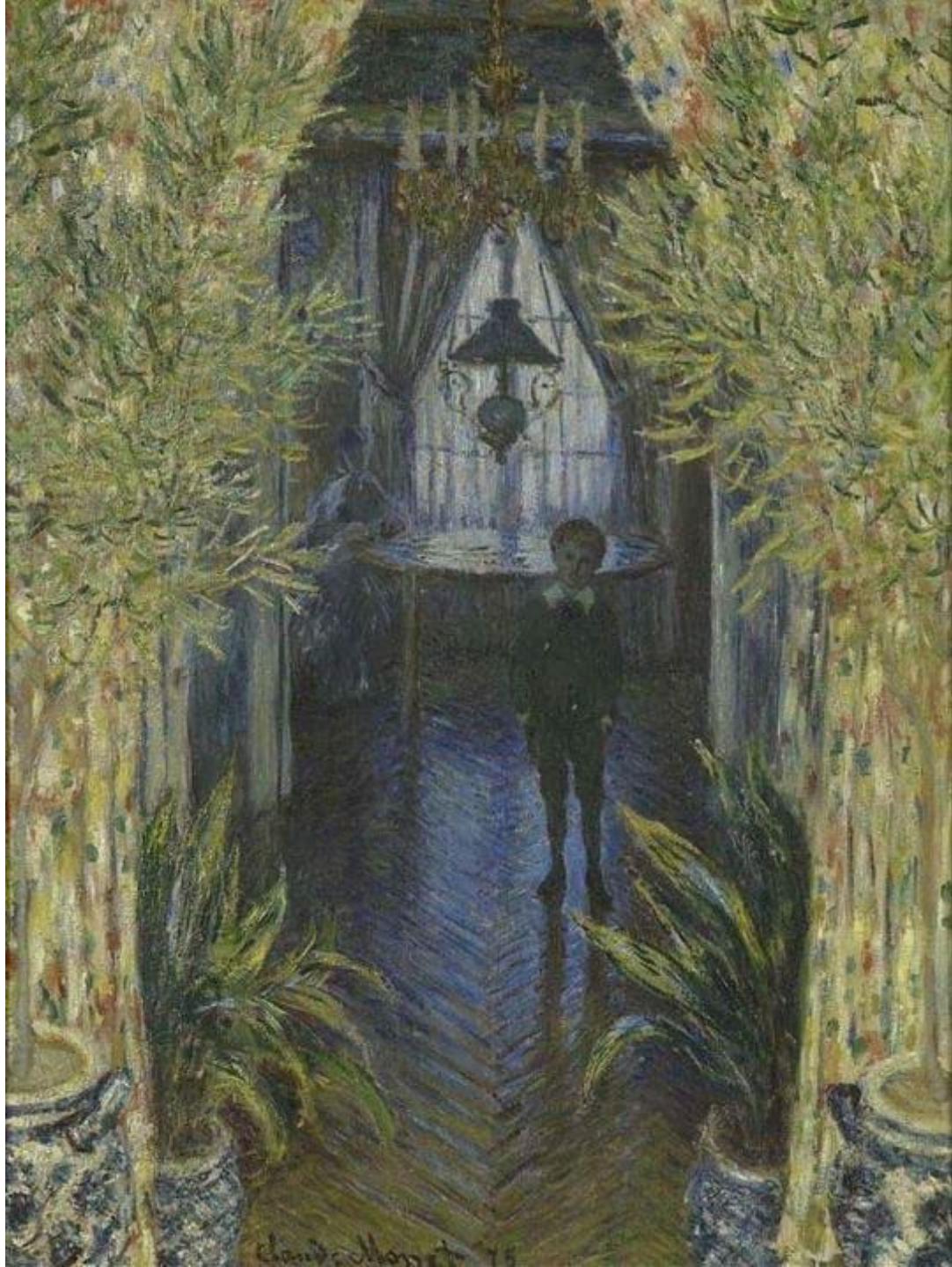
## **THE WINDMILL ON THE ONBEKENDE CANAL AMSTERDAM**

Painted in 1874, it depicts the old Zaandam mill that sat along the Onbekende Canal in Amsterdam.

**SAILING BOAT IN PETIT-  
GENNEVILLIERS**

1874





## **A CORNER OF THE APARTMENT**

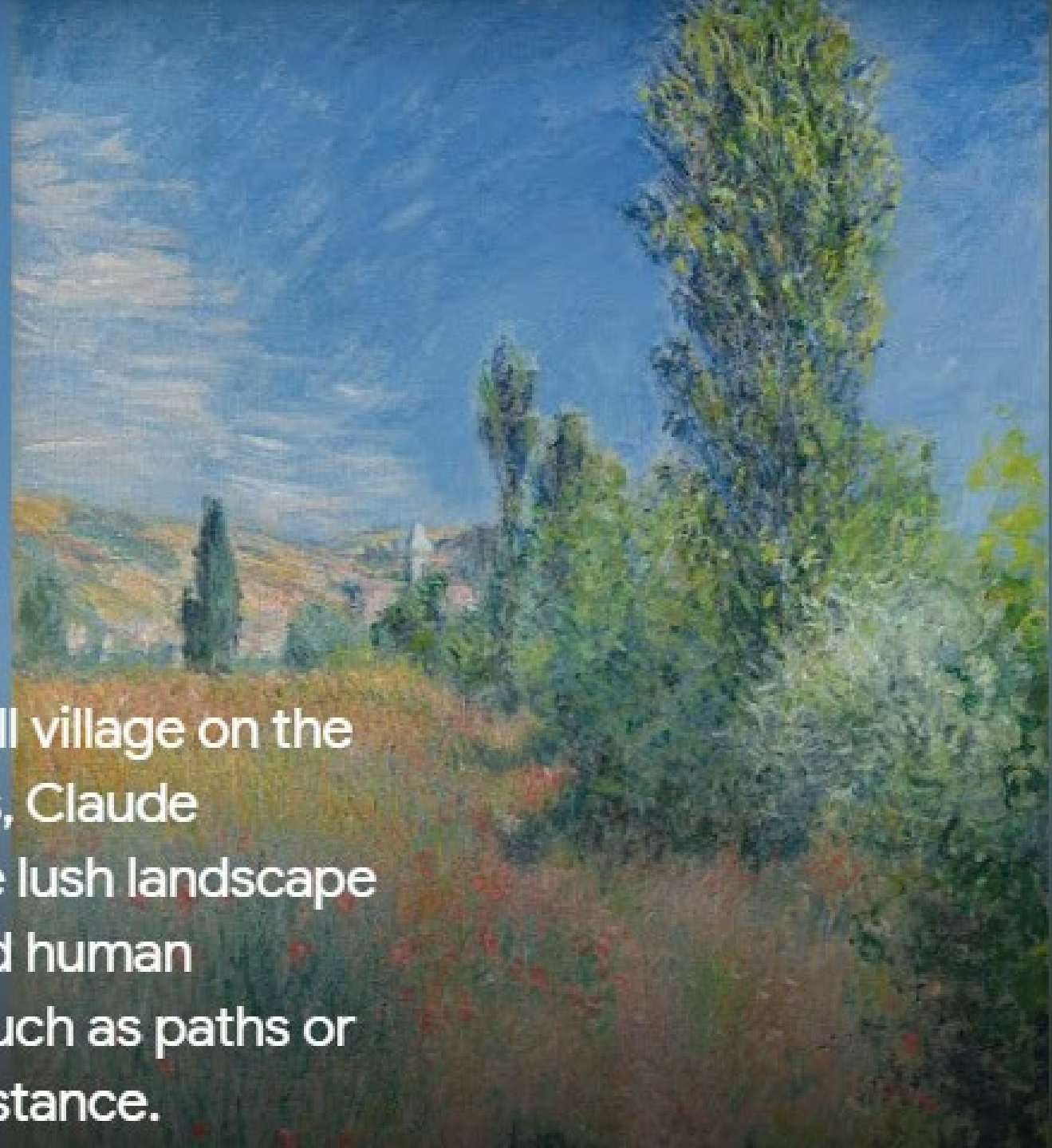
Painted in 1875

From 1871, when he returned from England, until 1878, Monet lived in the commune of Argenteuil, near Paris.

During this period, he often featured his wife, Camille, in his paintings, with their eldest son Jean, born in 1867, as he did in this painting.

## Vétheuil 1880

After his move in 1878 to Vétheuil, a small village on the Seine about 65 kilometers north of Paris, Claude Monet's creative activity focused on the lush landscape of fields and meadows. Often he evoked human activity only indirectly, through motifs such as paths or vaguely recognizable buildings in the distance.



## THE ARTIST'S GARDEN AT VÉTHEUIL 1882

Monet planted gardens wherever he lived.

When he rented this house at Vétheuil, he made arrangements with the owner to landscape the terraces, which lead down to the Seine.

The boy with the wagon is Monet's young son, and on the steps behind him, are other members of his extended household...



# Les Petites-Dalles

Here, Claude Monet chose a vantage point that emphasized the cliffs' monumentality. Strong color contrasts intensify the drama of the scene, in which Monet suggested the figures of beachgoers using only a few daubs of the brush.



# Bordighera

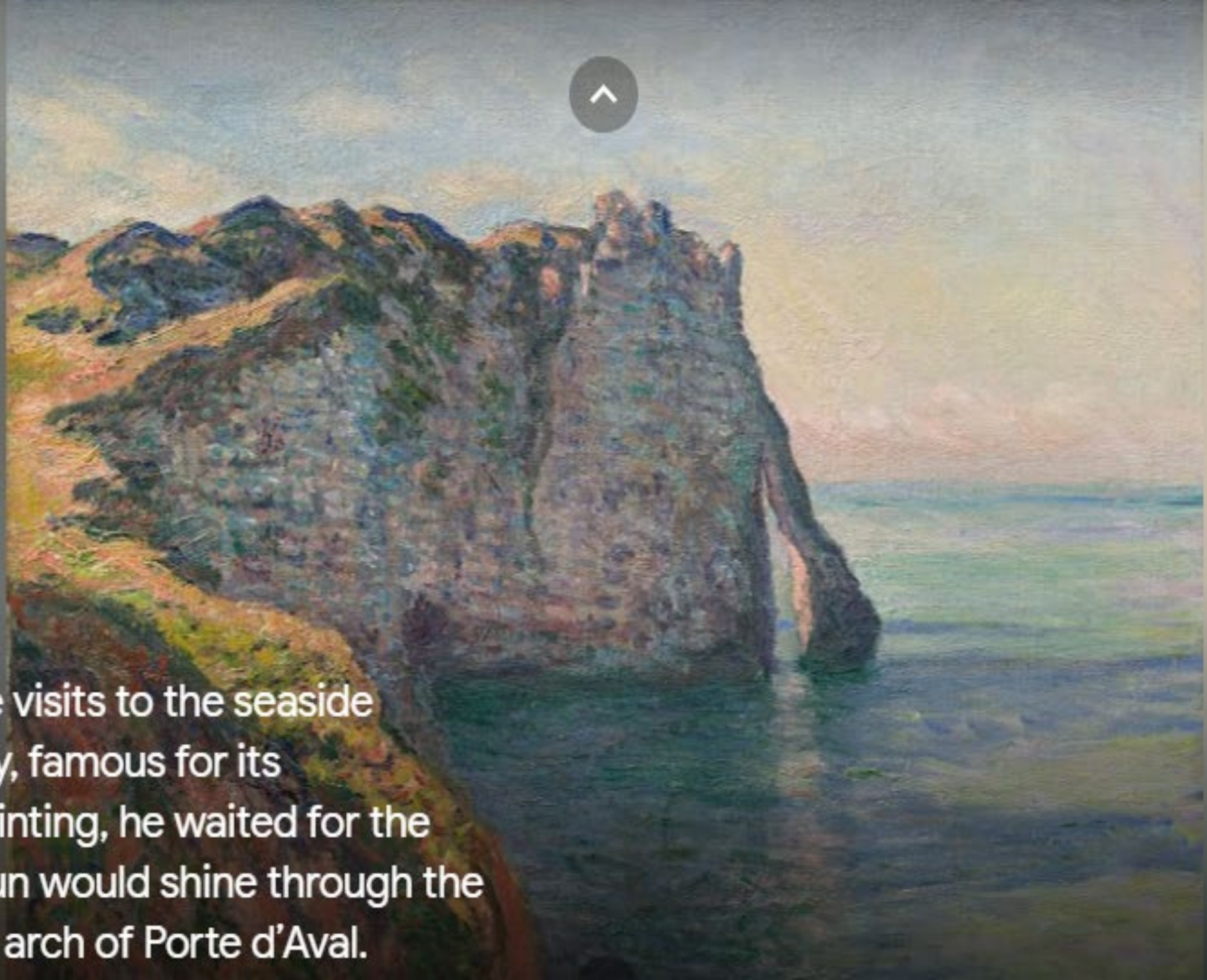
In 1884 Monet spent a number of weeks in Bordighera, a city on the coast of Italy about ten kilometers from the French border.

Monet described Bordighera and its environs as "magical" and overpowering, and at first found it difficult to adequately render the intense colors of the region.



# Étretat

Claude Monet made multiple visits to the seaside resort of Étretat in Normandy, famous for its spectacular cliffs. For this painting, he waited for the precise moment when the sun would shine through the opening in the striking stone arch of Porte d'Aval.





**THE CLIFFS AT ETRETAT  
1885**



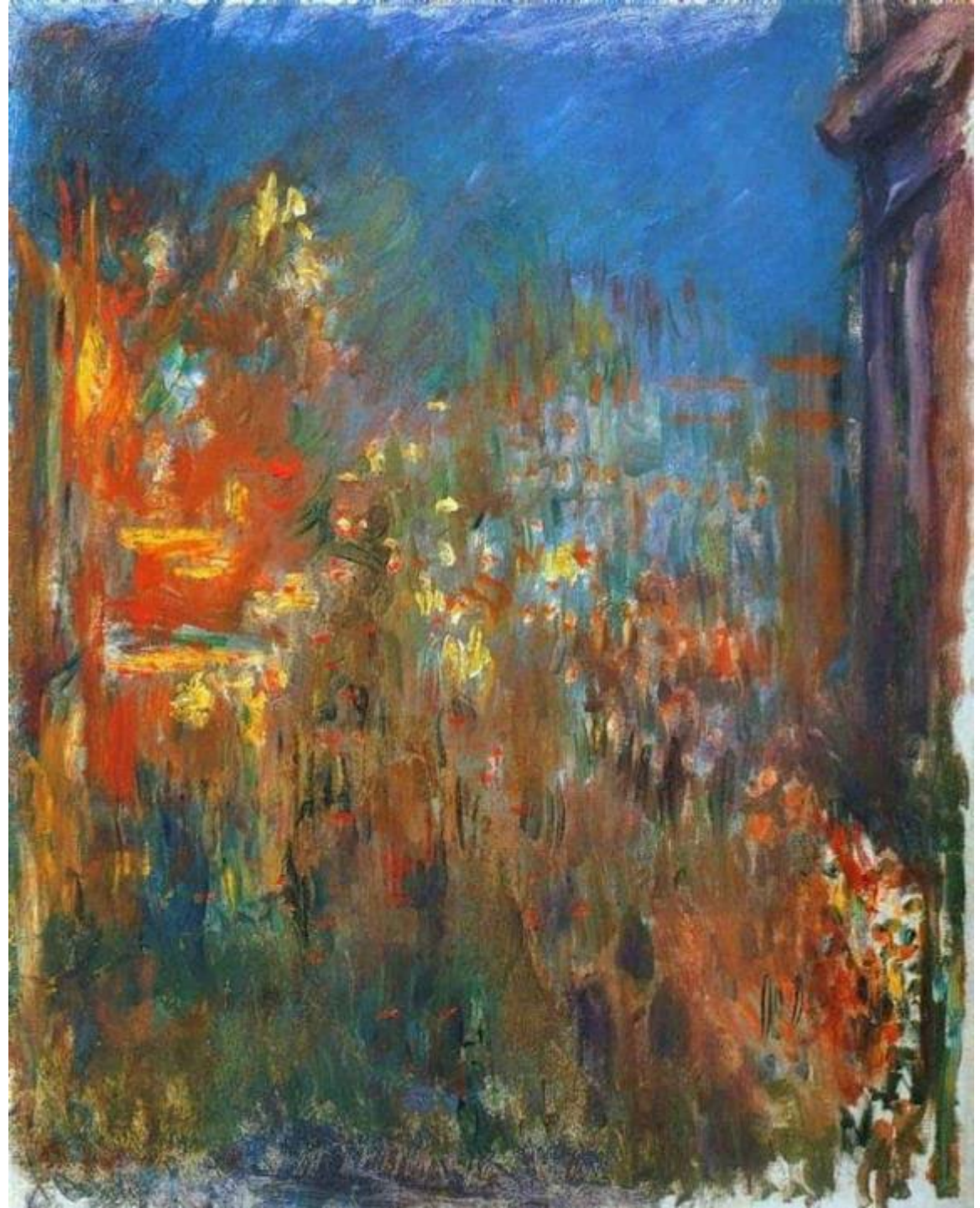
## **THE CLIFF, ETRETAT, SUNSET**

Between October and December 1885, Monet made nearly fifty paintings of the Normandy coast.

This work, shows the Porte d'Aval, a naturally formed arch, and a freestanding needle-like rock that attracted tourists and artists alike to the town of Étretat.

## LEICESTER SQUARE AT NIGHT

This 1901 Monet painting of is one of the artist's more abstract ones.

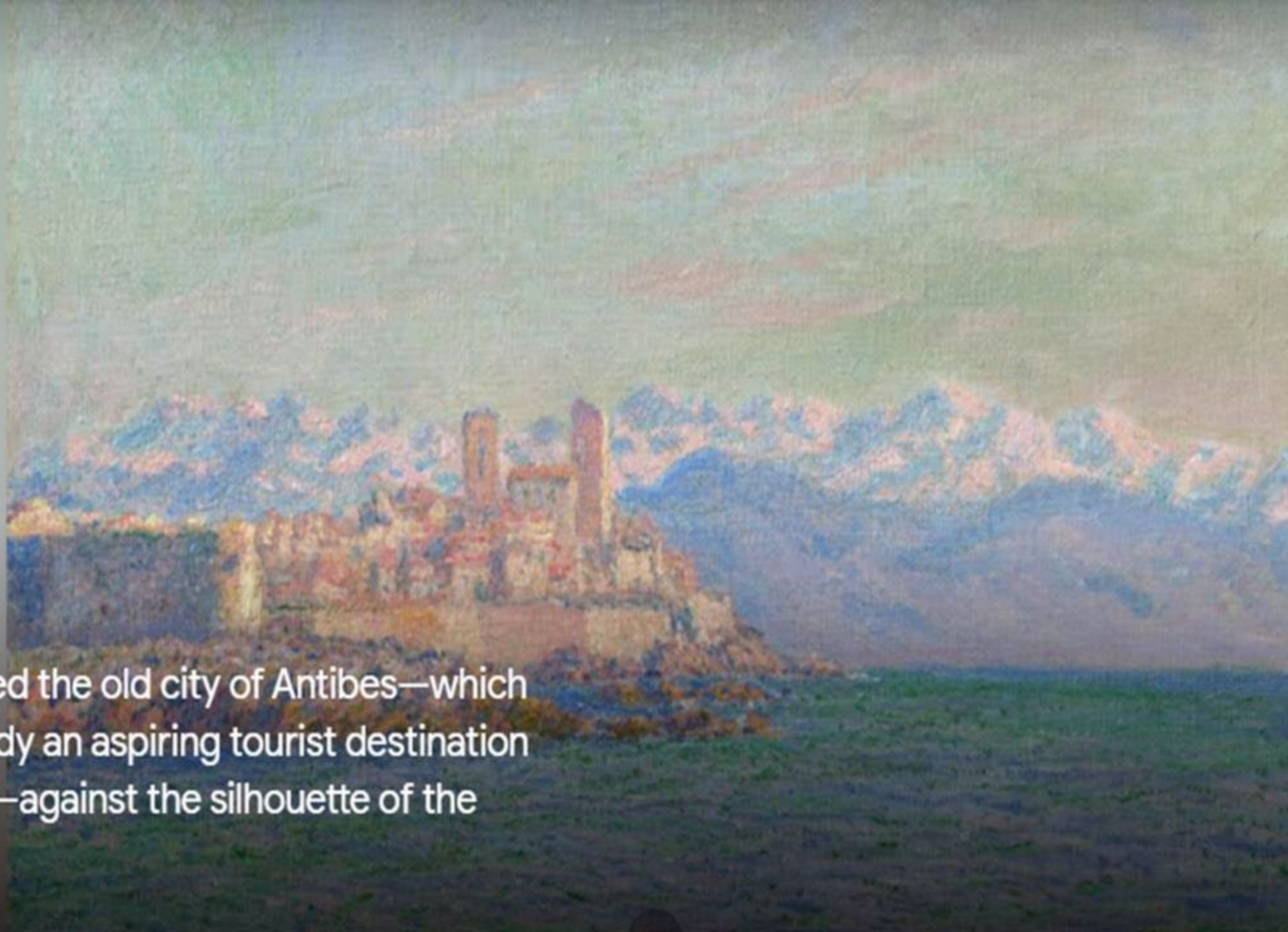




**WATERLOO BRIDGE,  
SUNLIGHT EFFECT  
1903**

## Antibes

Claude Monet depicted the old city of Antibes—which at that time was already an aspiring tourist destination on the French Riviera—against the silhouette of the snow-covered Alps.



## **THE HOUSES OF PARLIAMENT, SUNSET**

This is one in a series of paintings of the Palace of Westminster, made in 1903.



Monet enjoyed painting the Houses of Parliament at different times of the day, to capture the mood at those times



**THE LILY POND – DEEP HARMONY**  
**1899**





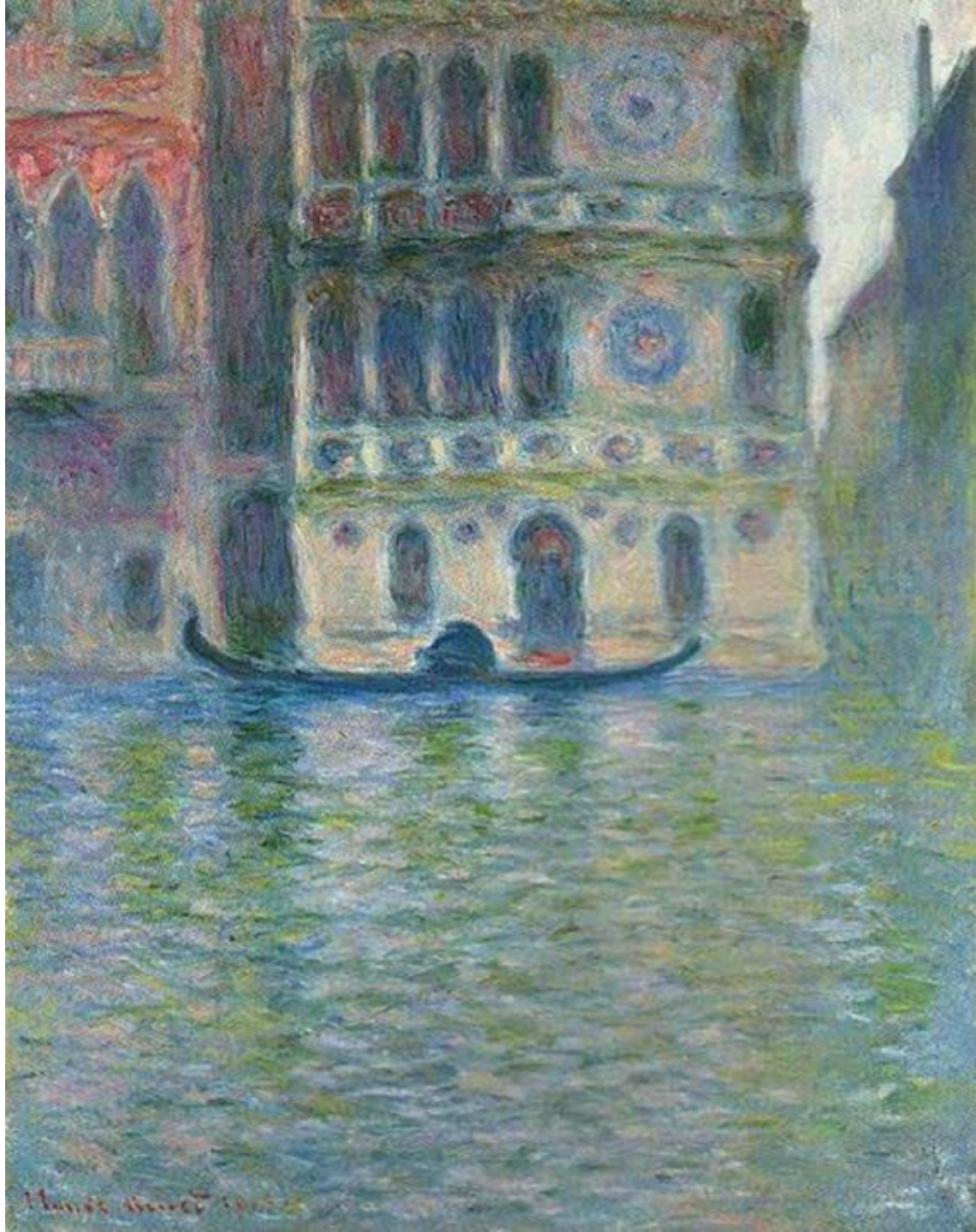
## **"WATER LILIES"**

It is one in a series of water lilies paintings, done in 1907 at one of his Garden ponds at Giverny, France.

# Venice

In the autumn of 1908, Monet and his wife Alice spent a number of weeks in Venice, a city that perhaps more than any other had enchanted generations of painters before him.

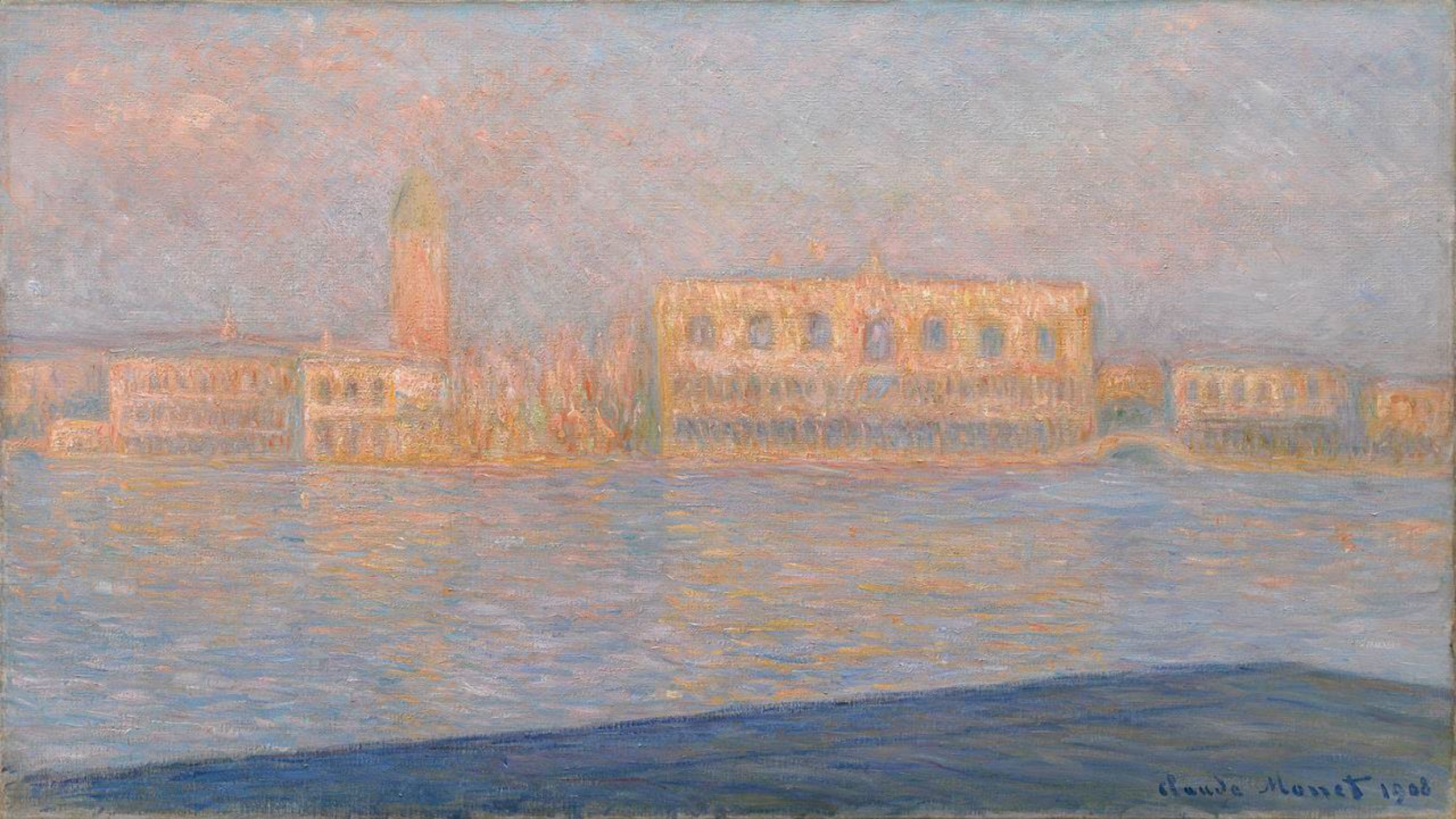




**PALAZZO DARIO, VENICE" (1908)**

**"The Palazzo Ducale", in Venice**  
This and the next painting were  
done in 1908





Claude Monet 1908

**"GRAND CANAL, VENICE"  
(1908)**



## **San Giorgio Maggiore at Dusk**

Painted in 1910, it forms part of a series of views of the monastery-island of San Giorgio Maggiore during his only visit to Venice.

Monet felt Venice was a city "too beautiful to be painted", which may be why he returned with many paintings unfinished to Giverny, his home in France, where he finished them.



## HIS MARRIED LIFE

His first Wife Camille died on September 5, 1879, at the young age of 32, from cancer.

After several difficult months following her death, he and his 2 sons - Jean and Michel, in 1878, temporarily moved into the home of Ernest Hoschedé, (1837-1891), a wealthy department store owner and patron of the arts.

Ernest and his Wife Alice lived in the town of Vetheuil with their six children.

The Hoschede family were great friends and patrons of Monet's work, but the husband's business went bankrupt, and he ended up abandoning his family.

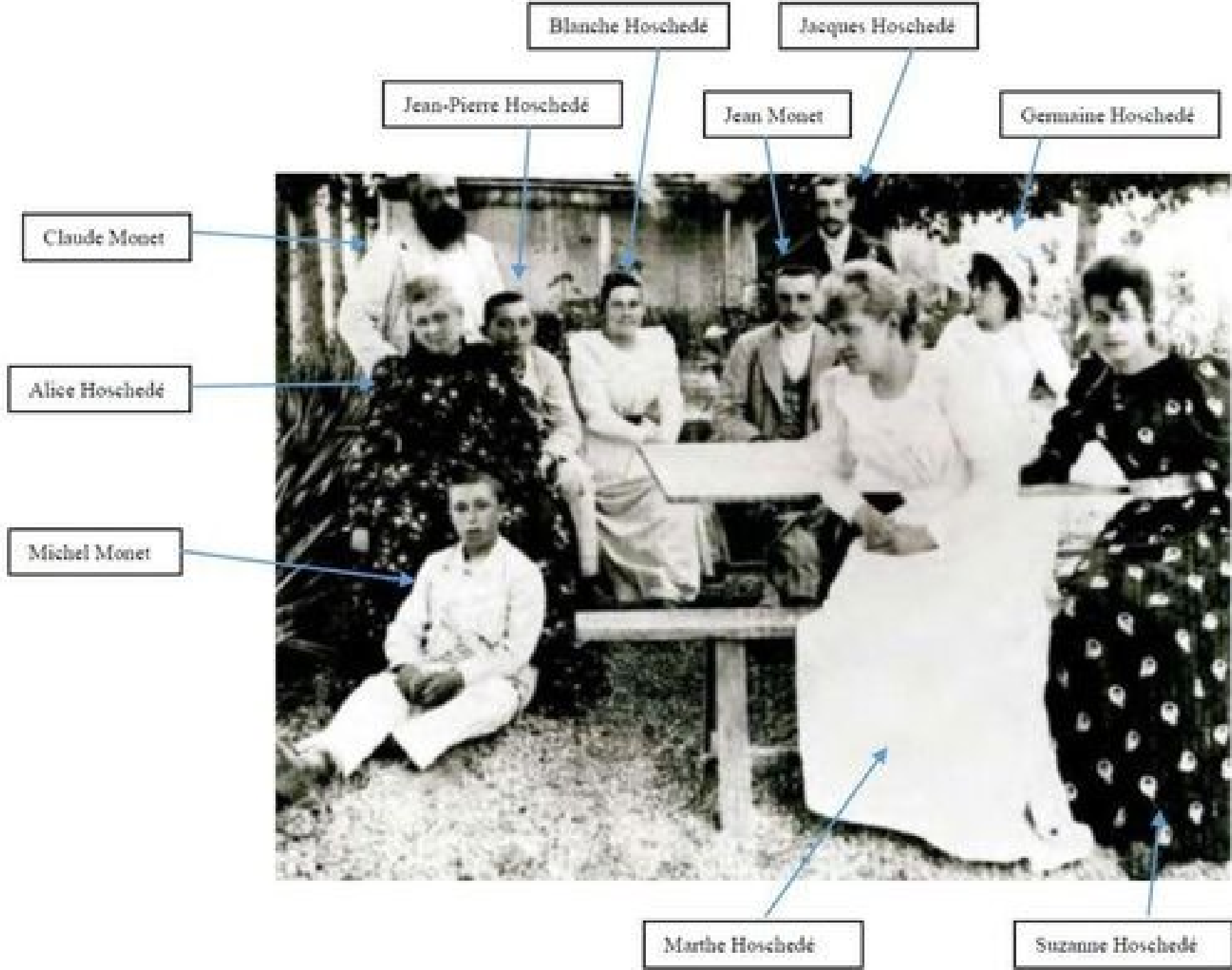
Alice continued living with Monet, and she became his second wife in 1892 (after Ernest Hoschede passed away).

Alice died on May 19, 1911.



### THE MONET AND HOSCHEDÉ FAMILIES IN 1880

From left to right: Claude Monet, Alice Hoschedé Monet, Jean-Pierre Hoschedé, Jacques Hoschedé, Blanche Hoschedé Monet, Jean Monet, Michel Monet, Martha Hoschedé, Germaine Hoschedé, and Suzanne Hoschedé





'From 1883 until his death in 1926, the Impressionist Claude Monet lived in Giverny, where he painted his Haystacks series and also painted the nearby village of Vernon.'

**Claude Monet  
as his home in  
Giverny, France  
in 1905**





Photos of Claude Monet, later in his Life when he happily lived and painted in his gardens and lily ponds in Giverny, France



We are also fortunate that a black and white movie was taken of Monet in 1915.

In the beginning, he is talking to the famous actor and author Sacha Guitry, who made a series of movies, like this one, about famous people of his time.

The second part is of Monet painting a scene, by one of his ponds at Giverny, France.



<https://www.youtube.com/watch?v=BJE4QUNgaeg&t=1s> 2.7 min

**IN HONOR OF THE END OF  
WORLD WAR I, MONET DONATED  
A SERIES OF 8 MONUMENTAL  
PAINTED NYMPHÉAS (WATER  
LILIES) TO THE FRENCH  
GOVERNMENT.**

Installed in 1927 at the Musée de l'Orangerie in Paris, the eight paintings from his over 60 Nymphéas, each measuring 14 feet wide, are exhibited according to Monet's wishes in an immersive elliptical display.

The result, in the words of the artist, is “the illusion of an endless whole, of a wave with no horizon and no shore.”

The French painter André Masson famously hailed it as the “Sistine Chapel of Impressionism”.







*Adolphe Monet Reading in a Garden*

<https://www.youtube.com/watch?v=YUmlaaUXsbg> 6.3 min

The image features a central black rectangular area. On either side of this black area, there are vertical panels of red fabric that resemble theater curtains, with visible folds and a slight sheen. The red curtains are positioned to create a frame around the central black space. In the center of the black space, the words "THE END" are written in a clean, white, sans-serif font. The text is centered both horizontally and vertically within the black area.

THE END





## LIFE AND PAINTING TIMELINE

- 1862–1871 Paris. Visits to Trouville (1870), London and Amsterdam (1871)
- 1870 Marriage to Camille Doncieux.
- 1871–1878 Family life in Argenteuil, near Paris. Visit to Amsterdam (1874)
- 1878 Living in Paris – Birth of Michel Monet
- 1878–1881 Living at Vétheuil, 60 km north-west of Paris. Visit to Fécamp.
- 1879 Death of Camille
- 1881–1883 Living at Poissy, 25 km north-west of Paris.
- 1883 Living at Vernon, Normandy
- 1883–1926 Living at his home and garden complex in Giverny, 80 km north west of Paris. Visits to Bordighera (1884), Holland (1886), Belle Île (1886), Antibes (1888), Creuse (1889), Rouen (1892, 1893, 1894), Norway (1895), London (1900), Venice (1908)
- 1892 Marriage to Alice Hoschedé
- 1926 Death