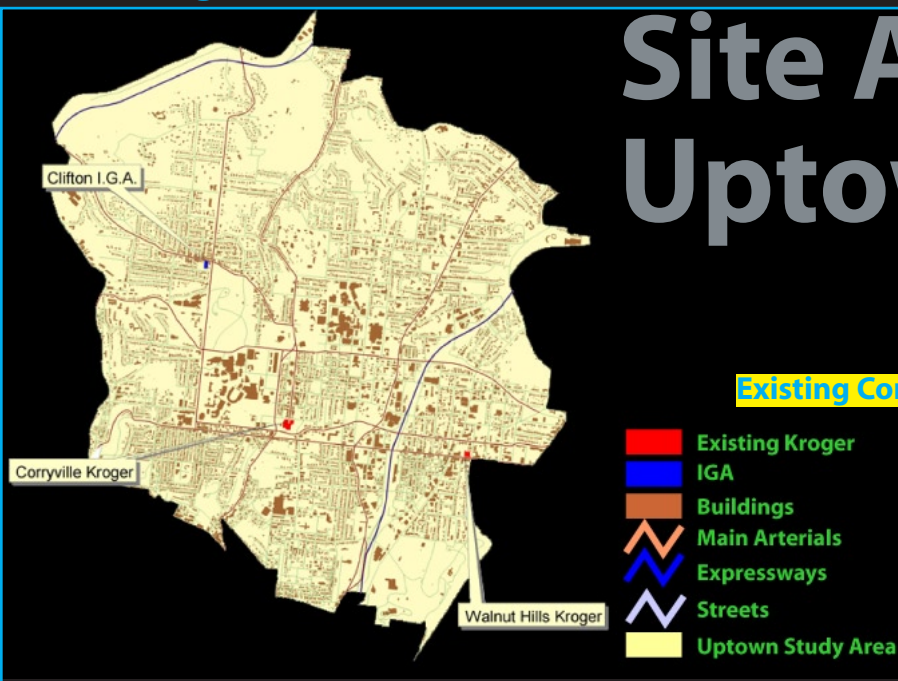
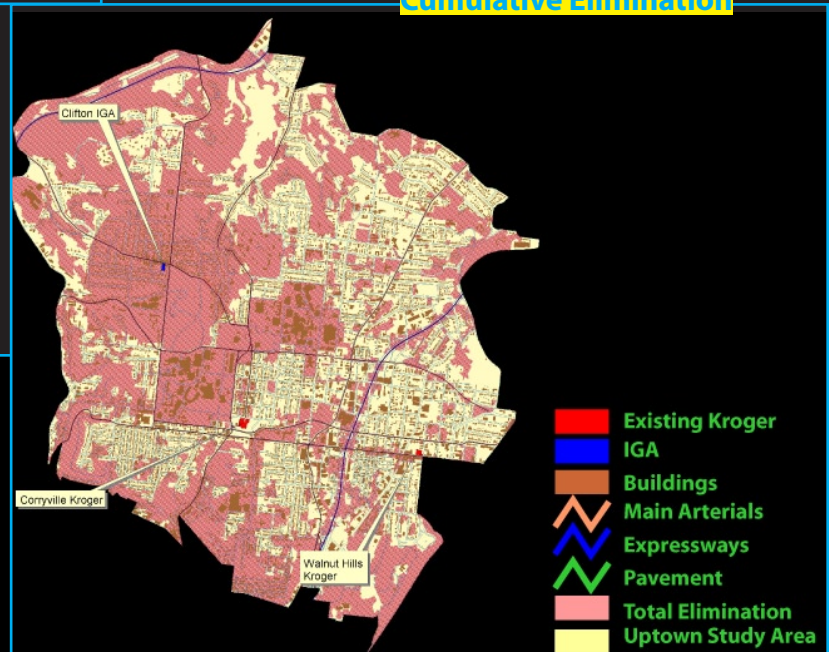


Site analysis included the development of site selection criteria, and recommendations on site selection for new stores in study area. The contextual analysis investigated the physical and socioeconomic characteristics and dynamics of the "University Heights" and adjacent areas, and the identification of key relationships and issues within this location, (i.e. access and or typologies of existing food stores).

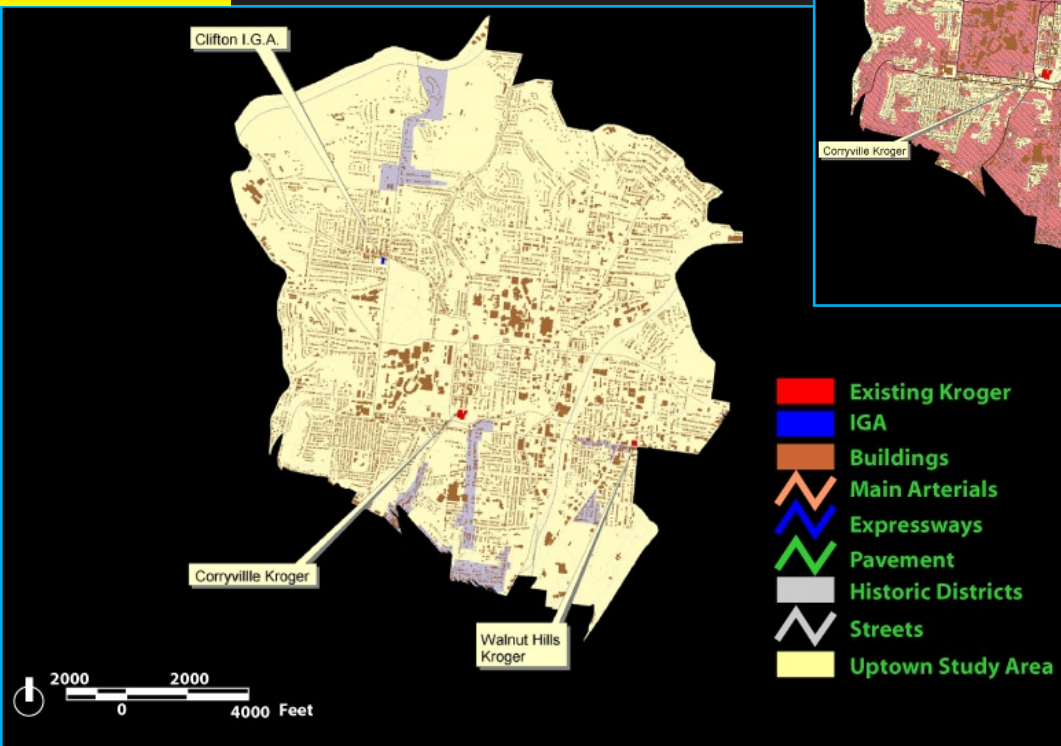
# Site Analysis: Uptown Cincinnati



## Cumulative Elimination

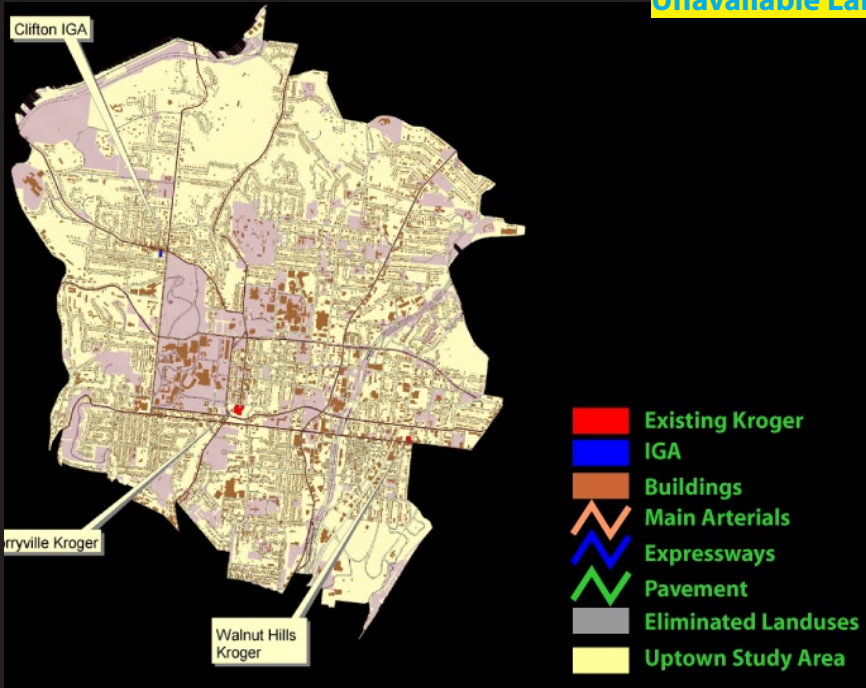


## Historic District

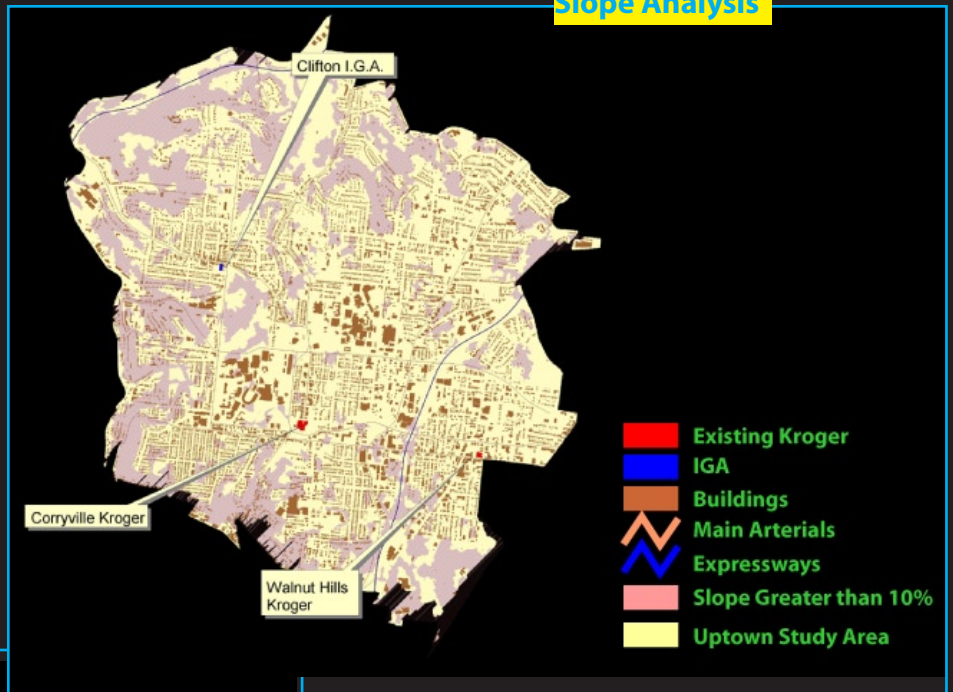


This study would aid the design and illustration of an "ideal" urban market prototype based on independent study and documentation of the sponsor's existing stores/

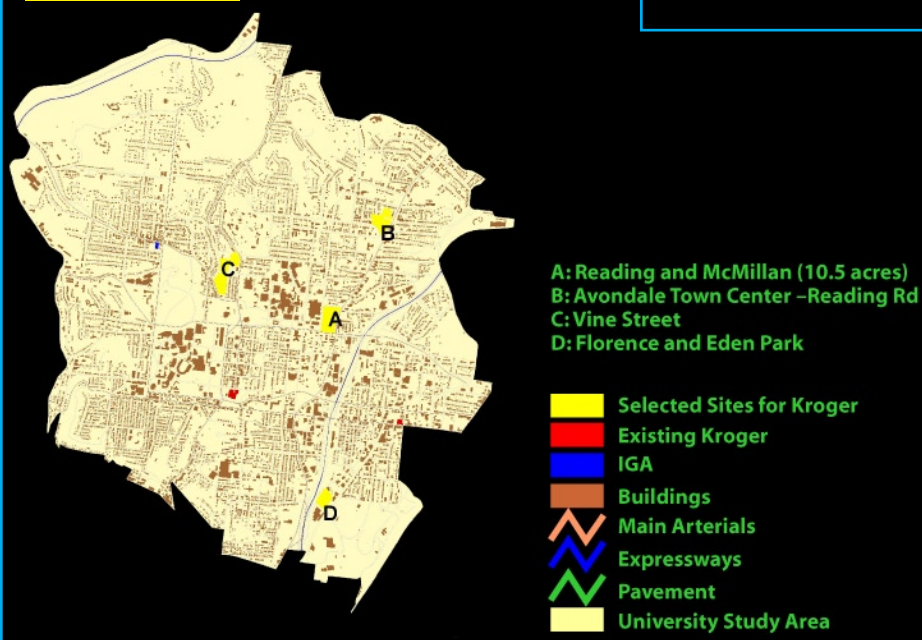
**Unavailable Land**



**Slope Analysis**



**Potential Sites**



retail system structure and other relevant prototype "urban market" supermarket model formats.